

## GCP6 Rabbit pAb

CatalogNo: YT1882

### Key Features

#### Host Species

- Rabbit

#### Reactivity

- Human, Mouse

#### Applications

- WB, IHC, IF, ELISA

#### MW

- 200kD (Observed)

#### Isotype

- IgG

### Recommended Dilution Ratios

**WB 1:500-1:2000**

**IHC 1:100-1:300**

**ELISA 1:20000**

**IF 1:50-200**

### Storage

#### Storage\*

-15°C to -25°C/1 year (Do not lower than -25°C)

#### Formulation

Liquid in PBS containing 50% glycerol, 0.5% BSA and 0.02% sodium azide.

### Basic Information

#### Clonality

Polyclonal

### Immunogen Information

#### Immunogen

The antiserum was produced against synthesized peptide derived from human TUBGCP6. AA range: 741-790

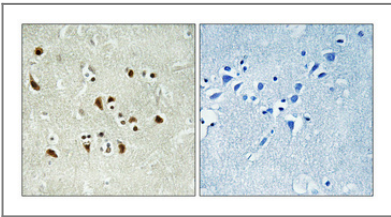
#### Specificity

GCP6 Polyclonal Antibody detects endogenous levels of GCP6 protein.

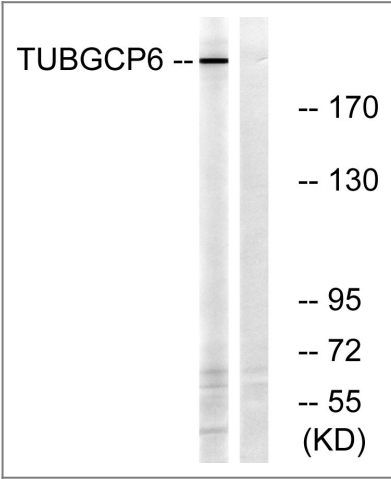
### Target Information

Gene name	TUBGCP6		
Protein Name	Gamma-tubulin complex component 6		
	Organism	Gene ID	UniProt ID
	Human	<a href="#">85378</a> ;	<a href="#">Q96RT7</a> ;
Cellular Localization	Cytoplasm, cytoskeleton, microtubule organizing center, centrosome .		
Tissue specificity	Brain,Epithelium,Kidney,PCR rescued clones,		
Function	Function:Gamma-tubulin complex is necessary for microtubule nucleation at the centrosome.,sequence Caution:Intron retention.,similarity:Belongs to the GCP family.,subunit:Gamma-tubulin complex is composed of gamma-tubulin, GCP2, GCP3, GCP4, GCP5 and GCP6.,		

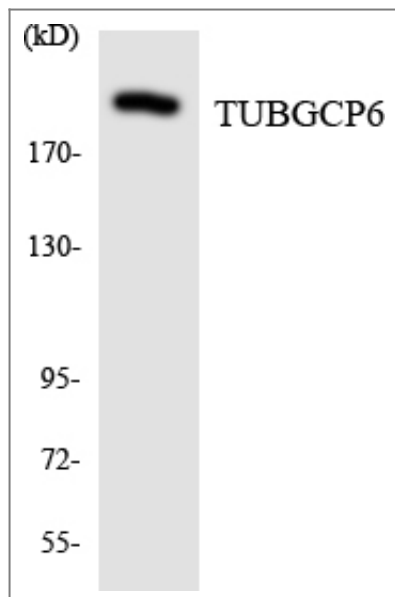
| Validation Data



Immunohistochemical analysis of paraffin-embedded Human brain. Antibody was diluted at 1:100(4° overnight). High-pressure and temperature Tris-EDTA,pH8.0 was used for antigen retrieval. Negetive contrl (right) obtaned from antibody was pre-absorbed by immunogen peptide.



Western blot analysis of lysates from COLO cells, using TUBGCP6 Antibody. The lane on the right is blocked with the synthesized peptide.



Western blot analysis of the lysates from HeLa cells using TUBGCP6 antibody.

## Contact information

Orders: [order.cn@immunoway.com](mailto:order.cn@immunoway.com)  
Support: [support.cn@immunoway.com](mailto:support.cn@immunoway.com)  
Telephone: 400-8787-807(China)  
Website: <http://www.immunoway.com.cn>  
Address: 2200 Ringwood Ave San Jose, CA 95131 USA



Please scan the QR code  
to access additional  
product information:  
**GCP6 Rabbit pAb**

For Research Use Only. Not for Use in Diagnostic Procedures.

[Antibody](#) | [ELISA Kits](#) | [Protein](#) | [Reagents](#)