

## GCP4 Rabbit pAb

CatalogNo: YT1880

### | Key Features

#### Host Species

- Rabbit

#### Reactivity

- Human, Mouse

#### Applications

- WB, IHC, IF, ELISA

#### MW

- 76kD (Observed)

#### Isotype

- IgG

### | Recommended Dilution Ratios

**WB 1:500-1:2000**

**IHC 1:100-1:300**

**ELISA 1:10000**

**IF 1:50-200**

### | Storage

**Storage\*** -15°C to -25°C/1 year (Do not lower than -25°C)

**Formulation** Liquid in PBS containing 50% glycerol, 0.5% BSA and 0.02% sodium azide.

### | Basic Information

**Clonality** Polyclonal

### | Immunogen Information

**Immunogen** The antiserum was produced against synthesized peptide derived from human TUBGCP4. AA range: 191-240

**Specificity** GCP4 Polyclonal Antibody detects endogenous levels of GCP4 protein.

### | Target Information

Gene name TUBGCP4

Protein Name Gamma-tubulin complex component 4

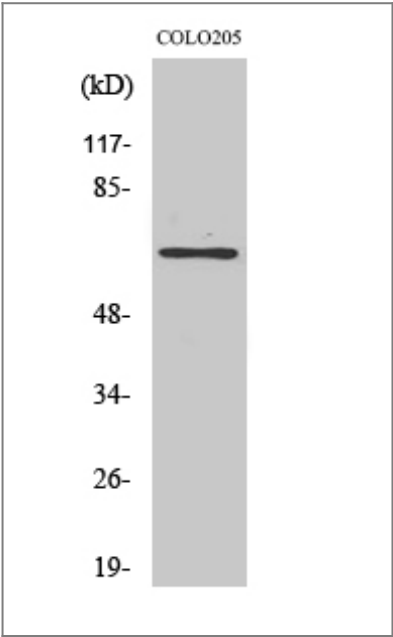
Organism	Gene ID	UniProt ID
Human	<a href="#">27229;</a>	<a href="#">Q9UGJ1;</a>
Mouse	<a href="#">51885;</a>	<a href="#">Q9D4F8;</a>

Cellular Localization Cytoplasm, cytoskeleton, microtubule organizing center, centrosome.

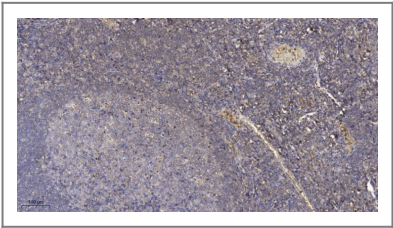
Tissue specificity Ubiquitously expressed.

Function Function:Gamma-tubulin complex is necessary for microtubule nucleation at the centrosome.,similarity:Belongs to the GCP family.,subunit:Gamma-tubulin complex is composed of gamma-tubulin, GCP2, GCP3, GCP4, GCP5 and GCP6.,tissue specificity:Ubiquitously expressed.,

## Validation Data



Western Blot analysis of various cells using GCP4 Polyclonal Antibody



Immunohistochemical analysis of paraffin-embedded human tonsil. 1, Antibody was diluted at 1:200(4° overnight). 2, Tris-EDTA,pH9.0 was used for antigen retrieval. 3,Secondary antibody was diluted at 1:200(room temperature, 30min).

## Contact information

Orders: order.cn@immunoway.com  
Support: support.cn@immunoway.com  
Telephone: 400-8787-807(China)  
Website: <http://www.immunoway.com.cn>  
Address: 2200 Ringwood Ave San Jose, CA 95131 USA



Please scan the QR code  
to access additional  
product information:  
**GCP4 Rabbit pAb**

---

For Research Use Only. Not for Use in Diagnostic Procedures.

[Antibody](#) | [ELISA Kits](#) | [Protein](#) | [Reagents](#)