

GCKR Rabbit pAb

CatalogNo: YT1873

Key Features

Host Species

- Rabbit

Reactivity

- Human, Mouse, Rat

Applications

- WB, ELISA

MW

- 68kD (Observed)

Isotype

- IgG

Recommended Dilution Ratios

WB 1:500-1:2000

ELISA 1:40000

Not yet tested in other applications.

Storage

Storage* -15°C to -25°C/1 year (Do not lower than -25°C)

Formulation Liquid in PBS containing 50% glycerol, 0.5% BSA and 0.02% sodium azide.

Basic Information

Clonality Polyclonal

Immunogen Information

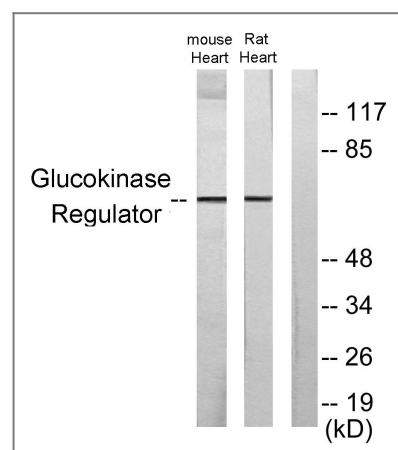
Immunogen The antiserum was produced against synthesized peptide derived from human Glucokinase Regulator. AA range: 211-260

Specificity GCKR Polyclonal Antibody detects endogenous levels of GCKR protein.

Target Information

Gene name	GCKR		
Protein Name	Glucokinase regulatory protein		
	Organism	Gene ID	UniProt ID
	Human	2646;	Q14397;
	Mouse	231103;	Q91X44;
	Rat	25658;	Q07071;
Cellular Localization	Cytoplasm . Nucleus . Mitochondrion . Under low glucose concentrations, GCKR associates with GCK and the inactive complex is recruited to the hepatocyte nucleus. .		
Tissue specificity	Found in liver and pancreas. Not detected in muscle, brain, heart, thymus, intestine, uterus, adipose tissue, kidney, adrenal, lung or spleen.		
Function	Function:Inhibits glucokinase by forming an inactive complex with this enzyme.,similarity:Belongs to the GCKR family.,similarity:Contains 1 SIS domain.,tissue specificity:Found in liver and pancreas. Not detected in muscle, brain, heart, thymus, intestine, uterus, adipose tissue, kidney, adrenal, lung or spleen.,		

Validation Data



Western blot analysis of lysates from mouse heart and rat heart cells, using Glucokinase Regulator Antibody. The lane on the right is blocked with the synthesized peptide.

Contact information

Orders: order.cn@immunoway.com
 Support: support.cn@immunoway.com
 Telephone: 400-8787-807(China)
 Website: <http://www.immunoway.com.cn>
 Address: 2200 Ringwood Ave San Jose, CA 95131 USA



Please scan the QR code to access additional product information:
GCKR Rabbit pAb

