

GAP1-InsP4 BP Rabbit pAb

CatalogNo: YT1848

Key Features

Host Species

- Rabbit

Reactivity

- Human, Mouse, Rat

Applications

- WB, ELISA

MW

- 95kD (Observed)

Isotype

- IgG

Storage

Storage* -15°C to -25°C/1 year (Do not lower than -25°C)

Formulation Liquid in PBS containing 50% glycerol, 0.5% BSA and 0.02% sodium azide.

Recommended Dilution Ratios

WB 1:500-1:2000

ELISA 1:40000

Not yet tested in other applications.

Basic Information

Clonality Polyclonal

Immunogen Information

Immunogen The antiserum was produced against synthesized peptide derived from human RASA3. AA range: 247-296

Specificity GAP1-InsP4 BP Polyclonal Antibody detects endogenous levels of GAP1-InsP4 BP protein.

Target Information

Gene name RASA3

Protein Name Ras GTPase-activating protein 3

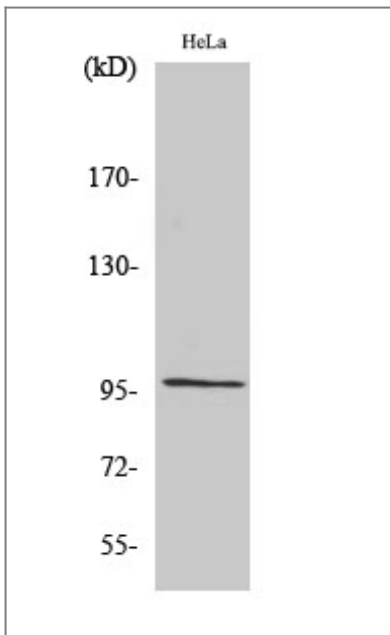
Organism	Gene ID	UniProt ID
Human	22821;	Q14644;
Mouse	19414;	Q60790;
Rat	29372;	Q9QYJ2;

Cellular Localization Cell membrane.

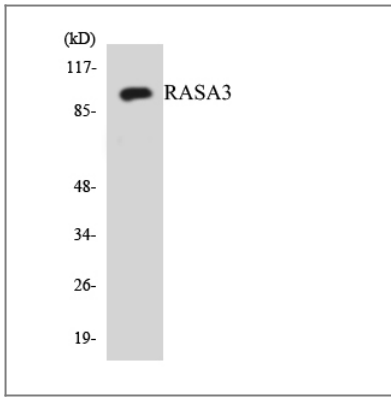
Tissue specificity Blood,Brain,Peripheral blood,Platelet,Testis,

Function Function:Inhibitory regulator of the Ras-cyclic AMP pathway. Binds inositol tetrakisphosphate (IP4) with high affinity. Might be a specific IP4 receptor.,similarity:Contains 1 Btk-type zinc finger.,similarity:Contains 1 PH domain.,similarity:Contains 1 Ras-GAP domain.,similarity:Contains 2 C2 domains.,

Validation Data



Western Blot analysis of various cells using GAP1-InsP4 BP Polyclonal Antibody



Western blot analysis of the lysates from HUVEC cells using RASA3 antibody.

Contact information

Orders: order.cn@immunoway.com
Support: support.cn@immunoway.com
Telephone: 400-8787-807(China)
Website: <http://www.immunoway.com.cn>
Address: 2200 Ringwood Ave San Jose, CA 95131 USA



Please scan the QR code to access additional product information:

GAP1-InsP4 BP
Rabbit pAb

For Research Use Only. Not for Use in Diagnostic Procedures.

[Antibody](#) | [ELISA Kits](#) | [Protein](#) | [Reagents](#)