

GALR2 Rabbit pAb

CatalogNo: YT1845

| Key Features

Host Species

- Rabbit

Reactivity

- Human, Mouse, Rat

Applications

- WB, ELISA

MW

- 42kD (Observed)

Isotype

- IgG

| Recommended Dilution Ratios

WB 1:500-1:2000

ELISA 1:40000

Not yet tested in other applications.

| Storage

Storage*

-15°C to -25°C/1 year (Do not lower than -25°C)

Formulation

Liquid in PBS containing 50% glycerol, 0.5% BSA and 0.02% sodium azide.

| Basic Information

Clonality

Polyclonal

| Immunogen Information

Immunogen

The antiserum was produced against synthesized peptide derived from human GALR2. AA range: 201-250

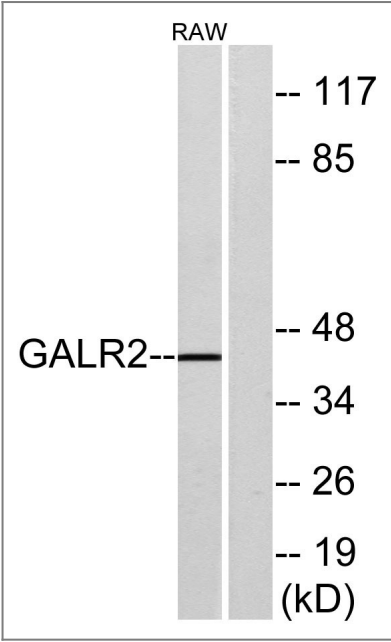
Specificity

GALR2 Polyclonal Antibody detects endogenous levels of GALR2 protein.

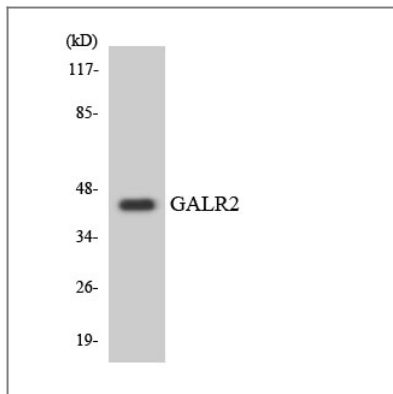
| Target Information

Gene name	GALR2		
Protein Name	Galanin receptor type 2		
	Organism	Gene ID	UniProt ID
	Human	8811 ;	043603 ;
	Mouse	14428 ;	088854 ;
	Rat	29234 ;	008726 ;
Cellular Localization	Cell membrane; Multi-pass membrane protein.		
Tissue specificity	Expressed abundantly within the central nervous system in both hypothalamus and hippocampus. In peripheral tissues, the strongest expression was observed in heart, kidney, liver, and small intestine.		
Function	Function:Receptor for the hormone galanin and for GALP. The activity of this receptor is mediated by G proteins that activate the phospholipase C/protein kinase C pathway (via Gq) and that inhibit adenylyl cyclase (via Gi).,similarity:Belongs to the G-protein coupled receptor 1 family.,tissue specificity:Expressed abundantly within the central nervous system in both hypothalamus and hippocampus. In peripheral tissues, the strongest expression was observed in heart, kidney, liver, and small intestine.,		

Validation Data



Western blot analysis of lysates from RAW264.7 cells, using GALR2 Antibody. The lane on the right is blocked with the synthesized peptide.



Western blot analysis of the lysates from HepG2 cells using GALR2 antibody.

Contact information

Orders: order.cn@immunoway.com
Support: support.cn@immunoway.com
Telephone: 400-8787-807(China)
Website: <http://www.immunoway.com.cn>
Address: 2200 Ringwood Ave San Jose, CA 95131 USA



Please scan the QR code
to access additional
product information:
GALR2 Rabbit pAb

For Research Use Only. Not for Use in Diagnostic Procedures.

[Antibody](#) | [ELISA Kits](#) | [Protein](#) | [Reagents](#)