

Galectin-8 Rabbit pAb

CatalogNo: YT1840

| Key Features

Host Species

- Rabbit

Reactivity

- Human, Mouse

Applications

- WB, IHC, IF, ELISA

MW

- 36kD (Observed)

Isotype

- IgG

| Recommended Dilution Ratios

WB 1:500-1:2000

IHC: 1:100-300

ELISA 1:20000

IF 1:100-300

Not yet tested in other applications.

| Storage

Storage* -15°C to -25°C/1 year (Do not lower than -25°C)

Formulation Liquid in PBS containing 50% glycerol, 0.5% BSA and 0.02% sodium azide.

| Basic Information

Clonality Polyclonal

| Immunogen Information

Immunogen The antiserum was produced against synthesized peptide derived from human LEG8. AA range: 61-110

Specificity Galectin-8 Polyclonal Antibody detects endogenous levels of Galectin-8 protein.

| Target Information

Gene name LGALS8

Protein Name Galectin-8

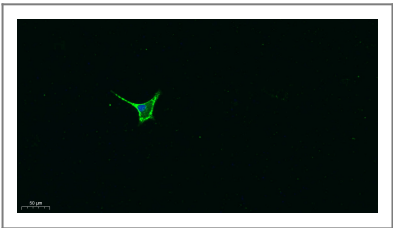
Organism	Gene ID	UniProt ID
Human	3964;	O00214;
Mouse	56048;	Q9JL15;

Cellular Localization Cytoplasmic vesicle . Cytoplasm, cytosol .

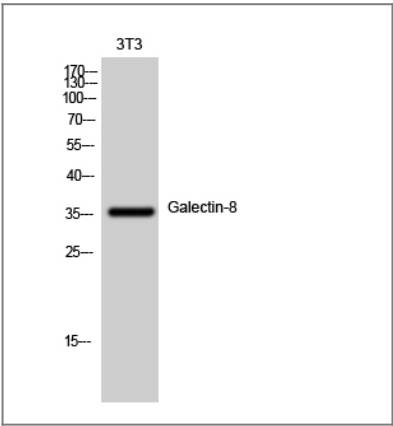
Tissue specificity Ubiquitous. Selective expression by prostate carcinomas versus normal prostate and benign prostatic hypertrophy.

Function Domain:Contains two homologous but distinct carbohydrate-binding domains.,online information:Galectin-8 C-terminal CRD,online information:Galectin-8 long isoform,similarity:Contains 2 galectin domains.,tissue specificity:Ubiquitous. Selective expression by prostate carcinomas versus normal prostate and benign prostatic hypertrophy.,

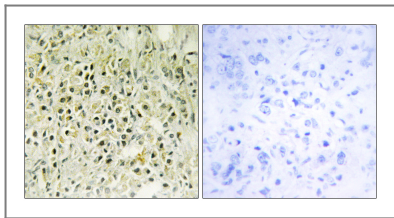
| Validation Data



Immunofluorescence analysis of A549. 1,primary Antibody was diluted at 1:200(4°C overnight). 2, Goat Anti Rabbit IgG (H&L) - Alexa Fluor 488 Secondary antibody was diluted at 1:1000(room temperature, 50min).3, DAPI(blue) 10min.



Western Blot analysis of 3T3 cells using Galectin-8 Polyclonal Antibody diluted at 1:1000



Immunohistochemistry analysis of paraffin-embedded human prostate carcinoma tissue, using LEG8 Antibody. The picture on the right is blocked with the synthesized peptide.

| Contact information

Orders: order.cn@immunoway.com
Support: support.cn@immunoway.com
Telephone: 400-8787-807(China)
Website: <http://www.immunoway.com.cn>
Address: 2200 Ringwood Ave San Jose, CA 95131 USA



Please scan the QR code to access additional product information:

Galectin-8 Rabbit pAb

For Research Use Only. Not for Use in Diagnostic Procedures.

[Antibody](#) | [ELISA Kits](#) | [Protein](#) | [Reagents](#)