

## Galectin-7 Rabbit pAb

CatalogNo: YT1839

### Key Features

**Host Species**

- Rabbit

**Reactivity**

- Human, Mouse, Rat

**Applications**

- IHC, IF, WB, ELISA

**MW**

- 16kD (Calculated)

**Isotype**

- IgG

### Recommended Dilution Ratios

**WB 1:500-2000****IHC 1:100-1:300****ELISA 1:5000****IF 1:50-200**

### Storage

**Storage\***

-15°C to -25°C/1 year(Do not lower than -25°C)

**Formulation**

Liquid in PBS containing 50% glycerol, 0.5% BSA and 0.02% sodium azide.

### Basic Information

**Clonality**

Polyclonal

### Immunogen Information

**Immunogen**

The antiserum was produced against synthesized peptide derived from human LEG7. AA range:41-90

**Specificity**

Galectin-7 Polyclonal Antibody detects endogenous levels of Galectin-7 protein.

### Target Information

**Gene name** LGALS7

**Protein Name** Galectin-7

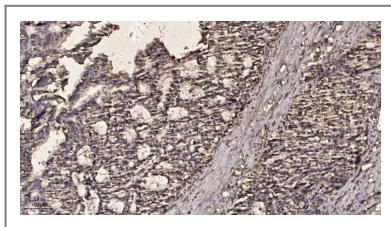
Organism	Gene ID	UniProt ID
Human	<a href="#">3963</a> ; <a href="#">653499</a> ;	<a href="#">P47929</a> ;
Mouse		<a href="#">O54974</a> ;
Rat	<a href="#">29518</a> ;	<a href="#">P97590</a> ;

**Cellular Localization** Cytoplasm . Nucleus . Secreted . May be secreted by a non-classical secretory pathway.

**Tissue specificity** Mainly expressed in stratified squamous epithelium.

**Function** Function:Could be involved in cell-cell and/or cell-matrix interactions necessary for normal growth control. Pro-apoptotic protein that functions intracellularly upstream of JNK activation and cytochrome c release.,induction:By p53.,online information:Galectin-7,similarity:Contains 1 galectin domain.,subcellular location:May be secreted by a non-classical secretory pathway.,subunit:Monomer.,tissue specificity:Mainly in stratified squamous epithelium.,

## | Validation Data



Immunohistochemical analysis of paraffin-embedded human liver cancer. 1, Antibody was diluted at 1:200(4° overnight). 2, Tris-EDTA,pH9.0 was used for antigen retrieval. 3,Secondary antibody was diluted at 1:200(room temperature, 45min).

## | Contact information

Orders: order.cn@immunoway.com  
Support: support.cn@immunoway.com  
Telephone: 400-8787-807(China)  
Website: <http://www.immunoway.com.cn>  
Address: 2200 Ringwood Ave San Jose, CA 95131 USA



Please scan the QR code to access additional product information:  
**Galectin-7 Rabbit pAb**