

GADD 45γ Rabbit pAb

CatalogNo: YT1832 **Orthogonal Validated** 

Key Features

Host Species

- Rabbit

Reactivity

- Human, Mouse, Rat

Applications

- WB, IHC, IF, ELISA

MW

- 19kD (Observed)

Isotype

- IgG

Storage

Storage* -15°C to -25°C/1 year (Do not lower than -25°C)

Formulation Liquid in PBS containing 50% glycerol, 0.5% BSA and 0.02% sodium azide.

Recommended Dilution Ratios

WB 1:500-1:2000

IHC 1:100-1:300

IF 1:200-1:1000

ELISA 1:5000

Not yet tested in other applications.

Basic Information

Clonality Polyclonal

Immunogen Information

Immunogen The antiserum was produced against synthesized peptide derived from human GA45G. AA range:101-150

Specificity GADD 45γ Polyclonal Antibody detects endogenous levels of GADD 45γ protein.

| Target Information

Gene name GADD45G

Protein Name Growth arrest and DNA damage-inducible protein GADD45 gamma

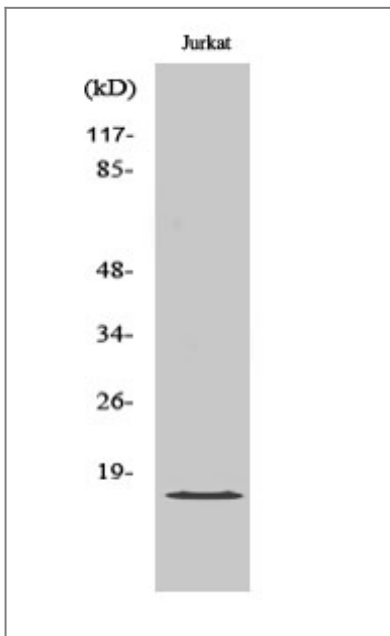
Organism	Gene ID	UniProt ID
Human	10912 ;	O95257 ;
Mouse		Q9Z111 ;
Rat	291005 ;	Q9WTQ7 ;

Cellular Localization nucleus,cytoplasm,

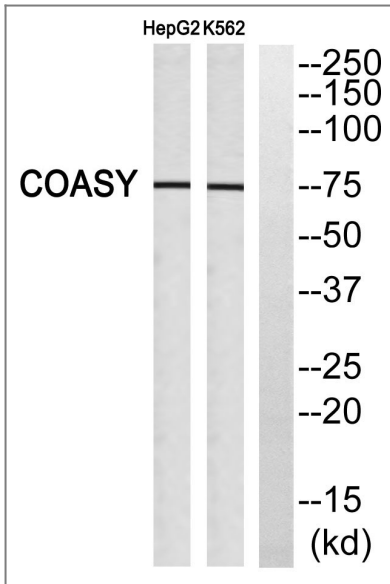
Tissue specificity Brain,Colon carcinoma,Lung,Placenta,

Function Function:Involved in the regulation of growth and apoptosis. Mediates activation of stress-responsive MTK1/MEKK4 MAPKKK.,similarity:Belongs to the GADD45 family.,subunit:Interacts with GADD45GIP1.,

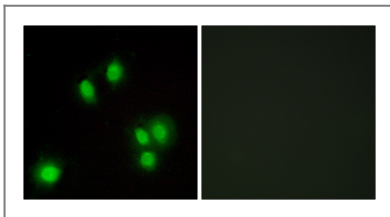
| Validation Data



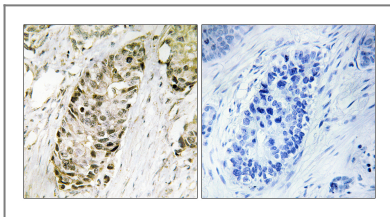
Western Blot analysis of various cells using GADD 45γ Polyclonal Antibody



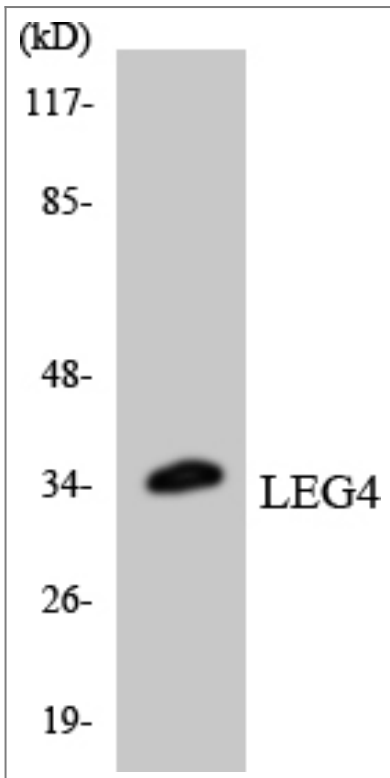
Western blot analysis of GA45G Antibody. The lane on the right is blocked with the GA45G peptide.



Immunofluorescence analysis of A549 cells, using GA45G Antibody. The picture on the right is blocked with the synthesized peptide.



Immunohistochemistry analysis of paraffin-embedded human lung carcinoma tissue, using GA45G Antibody. The picture on the right is blocked with the synthesized peptide.



Western blot analysis of the lysates from HeLa cells using LEG4 antibody.

| Contact information

Orders: order.cn@immunoway.com
Support: support.cn@immunoway.com
Telephone: 400-8787-807(China)
Website: <http://www.immunoway.com.cn>
Address: 2200 Ringwood Ave San Jose, CA 95131 USA



Please scan the QR code
to access additional
product information:
**GADD 45γ Rabbit
pAb**

For Research Use Only. Not for Use in Diagnostic Procedures.

[Antibody](#) | [ELISA Kits](#) | [Protein](#) | [Reagents](#)