

FoxN2 Rabbit pAb

CatalogNo: YT1755

Key Features

Host Species

- Rabbit

Reactivity

- Human

Applications

- WB,IHC,IF,ELISA

MW

- 36kD (Observed)

Isotype

- IgG

Recommended Dilution Ratios

WB 1:500-1:2000

IHC 1:100-1:300

ELISA 1:20000

IF 1:50-200

Storage

Storage*

-15°C to -25°C/1 year(Do not lower than -25°C)

Formulation

Liquid in PBS containing 50% glycerol, 0.5% BSA and 0.02% sodium azide.

Basic Information

Clonality

Polyclonal

Immunogen Information

Immunogen

The antiserum was produced against synthesized peptide derived from human FOXN2. AA range:341-390

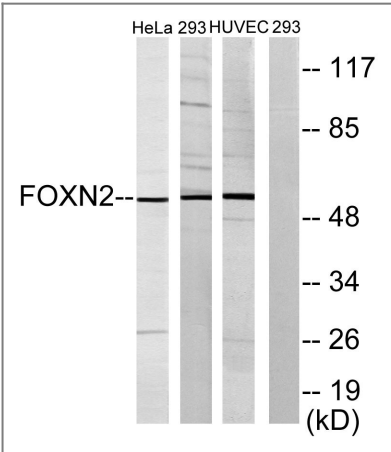
Specificity

FoxN2 Polyclonal Antibody detects endogenous levels of FoxN2 protein.

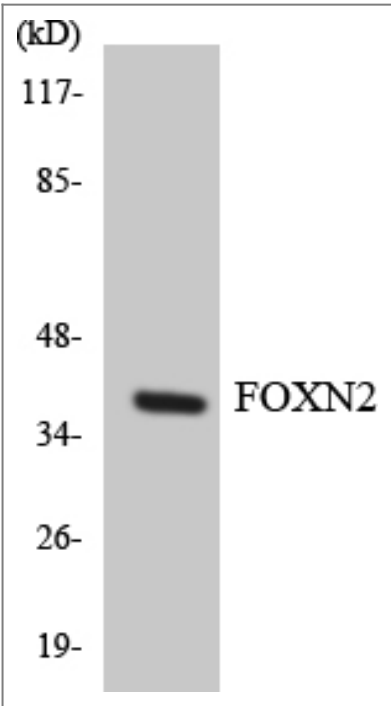
Target Information

Gene name	FOXN2		
Protein Name	Forkhead box protein N2		
	Organism	Gene ID	UniProt ID
	Human	3344 ;	P32314 ;
Cellular Localization	Nucleus.		
Tissue specificity	PCR rescued clones,Placenta,		
Function	Function:Binds to the purine-rich region in HTLV-I LTR.,similarity:Contains 1 fork-head DNA-binding domain.,		

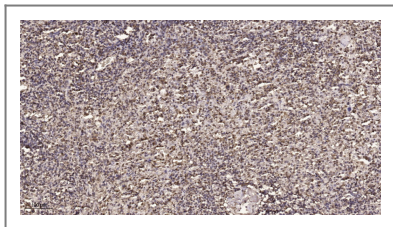
Validation Data



Western blot analysis of lysates from HeLa, 293, and HUVEC cells, using FOXN2 Antibody. The lane on the right is blocked with the synthesized peptide.



Western blot analysis of the lysates from K562 cells using FOXN2 antibody.



Immunohistochemical analysis of paraffin-embedded human spleen. 1, Tris-EDTA, pH 9.0 was used for antigen retrieval. 2 Antibody was diluted at 1:200 (4° overnight). 3, Secondary antibody was diluted at 1:200 (room temperature, 45 min).

Contact information

Orders: order.cn@immunoway.com
Support: support.cn@immunoway.com
Telephone: 400-8787-807 (China)
Website: <http://www.immunoway.com.cn>
Address: 2200 Ringwood Ave San Jose, CA 95131 USA



Please scan the QR code to access additional product information:
FoxN2 Rabbit pAb

For Research Use Only. Not for Use in Diagnostic Procedures.

[Antibody](#) | [ELISA Kits](#) | [Protein](#) | [Reagents](#)