

FOSL2 Rabbit pAb

CatalogNo: YT1739

Key Features

Host Species

- Rabbit

Reactivity

- Human, Mouse, Rat

Applications

- WB, IHC, IF, ELISA

MW

- 43kD (Observed)

Isotype

- IgG

Recommended Dilution Ratios

WB 1:500-1:2000

IHC 1:100-1:300

ELISA 1:10000

IF 1:50-200

Storage

Storage*

-15°C to -25°C/1 year (Do not lower than -25°C)

Formulation

Liquid in PBS containing 50% glycerol, 0.5% BSA and 0.02% sodium azide.

Basic Information

Clonality

Polyclonal

Immunogen Information

Immunogen

The antiserum was produced against synthesized peptide derived from human Fra-2. AA range: 271-320

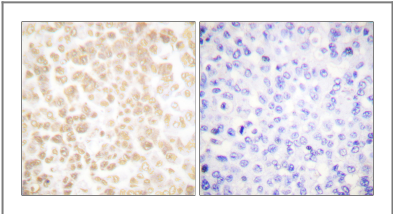
Specificity

FOSL2 Polyclonal Antibody detects endogenous levels of FOSL2 protein.

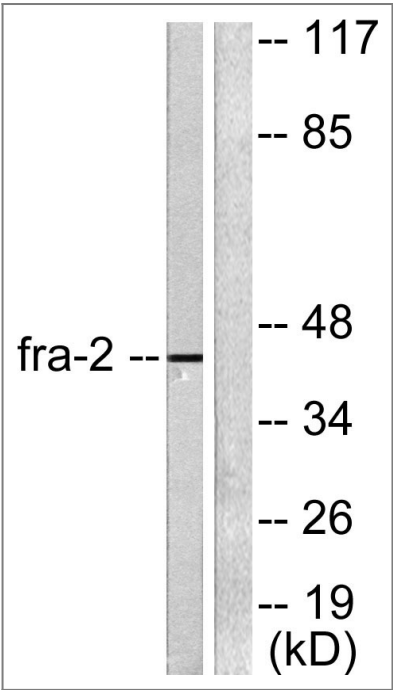
Target Information

Gene name	FOSL2		
Protein Name	Fos-related antigen 2		
	Organism	Gene ID	UniProt ID
	Human	2355 ;	P15408 ;
	Mouse	14284 ;	P47930 ;
	Rat	25446 ;	P51145 ;
Cellular Localization	Nucleus .		
Tissue specificity	Endothelial cell,Epithelium,Lung,		
Function	similarity:Belongs to the bZIP family.,similarity:Belongs to the bZIP family. Fos subfamily.,similarity:Contains 1 bZIP domain.,subunit:Heterodimer.,		

Validation Data



Immunohistochemistry analysis of paraffin-embedded human breast carcinoma tissue, using Fra-2 Antibody. The picture on the right is blocked with the synthesized peptide.



Western blot analysis of lysates from LOVO cells, using Fra-2 Antibody. The lane on the right is blocked with the synthesized peptide.

| Contact information

Orders: order.cn@immunoway.com
Support: support.cn@immunoway.com
Telephone: 400-8787-807(China)
Website: <http://www.immunoway.com.cn>
Address: 2200 Ringwood Ave San Jose, CA 95131 USA



Please scan the QR code
to access additional
product information:
FOSL2 Rabbit pAb

For Research Use Only. Not for Use in Diagnostic Procedures.

[Antibody](#) | [ELISA Kits](#) | [Protein](#) | [Reagents](#)