

Fhit Rabbit pAb

CatalogNo: YT1704

Key Features

Host Species

- Rabbit

Reactivity

- Human,Rat,Mouse,

Applications

- WB,IHC,IF,ELISA

MW

- 16kD (Observed)

Isotype

- IgG

Recommended Dilution Ratios

WB 1:500-1:2000

IHC 1:100-1:300

IF 1:200-1:1000

ELISA 1:10000

Not yet tested in other applications.

Storage

Storage* -15°C to -25°C/1 year(Do not lower than -25°C)

Formulation Liquid in PBS containing 50% glycerol, 0.5% BSA and 0.02% sodium azide.

Basic Information

Clonality Polyclonal

Immunogen Information

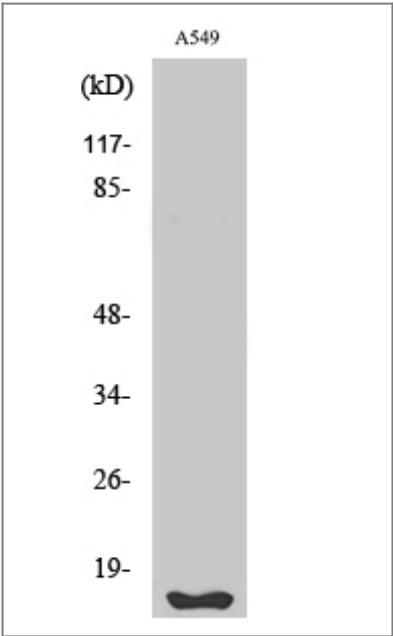
Immunogen The antiserum was produced against synthesized peptide derived from human FHIT. AA range:81-130

Specificity Fhit Polyclonal Antibody detects endogenous levels of Fhit protein.

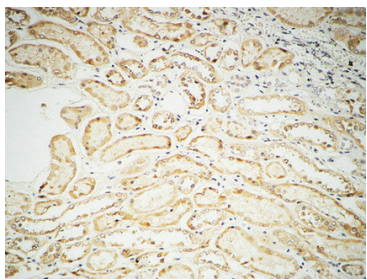
Target Information

| | | | |
|-----------------------|---|------------------------|--------------------------|
| Gene name | FHIT | | |
| Protein Name | Bis(5'-adenosyl)-triphosphatase | | |
| | Organism | Gene ID | UniProt ID |
| | Human | 2272 ; | P49789 ; |
| | Mouse | | O89106 ; |
| Cellular Localization | Cytoplasm . Mitochondrion . Nucleus . | | |
| Tissue specificity | Low levels expressed in all tissues tested. Phospho-FHIT observed in liver and kidney, but not in brain and lung. Phospho-FHIT undetected in all tested human tumor cell lines. | | |
| Function | Catalytic activity:P(1)-P(3)-bis(5'-adenosyl) triphosphate + H(2)O = ADP + AMP.,cofactor:Divalent cations. Magnesium, but manganese and to a lesser extent calcium or cobalt can be substituted; but not zinc, cadmium or nickel.,Disease:A chromosomal aberration involving FHIT is observed in early onset bilateral and multifocal clear cell renal carcinoma [MIM:144700]. Translocation t(3;8) (3p14.2).,Disease:Associated with digestive tract cancers. Numerous tumor types are found to have aberrant forms of FHIT protein due to deletions in a coding region of chromosome 3p14.2 including the fragile site locus FRA3B.,Function:Cleaves A-5'-PPP-5'A to yield AMP and ADP. Possible tumor suppressor for specific tissues.,mass spectrometry: PubMed:15007172,similarity:Contains 1 HIT domain.,subunit:Homodimer.,tissue specificity:Low levels expressed in all tissues tested. Phospho-FHIT observed in liver and kidney, but not in brain and lung. Phospho-FHIT undetected in all tested human tumor cell lines., | | |

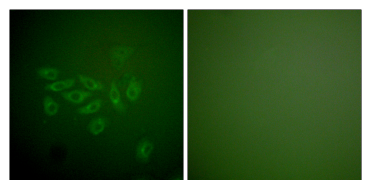
Validation Data



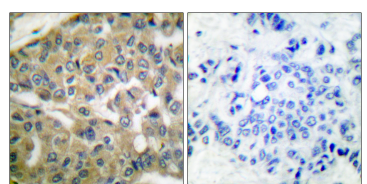
Western Blot analysis of various cells using Fhit Polyclonal Antibody



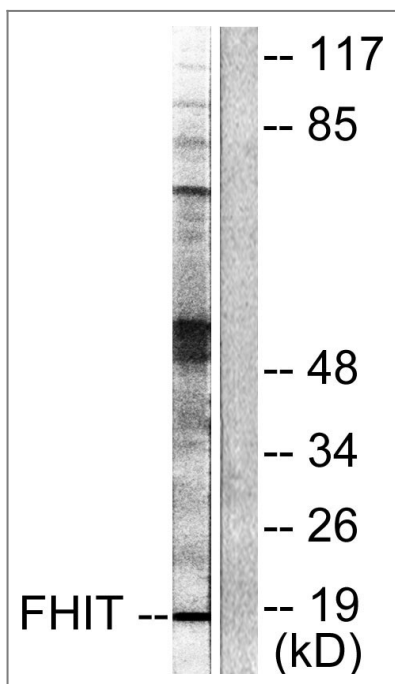
Immunohistochemical analysis of paraffin-embedded Human kidney. 1, Antibody was diluted at 1:100(4° overnight). 2, High-pressure and temperature EDTA, pH8.0 was used for antigen retrieval. 3, Secondary antibody was diluted at 1:200(room temperature, 30min).



Immunofluorescence analysis of A549 cells, using FHIT Antibody. The picture on the right is blocked with the synthesized peptide.



Immunohistochemistry analysis of paraffin-embedded human breast carcinoma tissue, using FHIT Antibody. The picture on the right is blocked with the synthesized peptide.



| Contact information

Orders: order.cn@immunoway.com
Support: support.cn@immunoway.com
Telephone: 400-8787-807(China)
Website: <http://www.immunoway.com.cn>
Address: 2200 Ringwood Ave San Jose, CA 95131 USA



Please scan the QR code to access additional product information:
Fhit Rabbit pAb

