

## FGF-22 Rabbit pAb

CatalogNo: YT1698

### | Key Features

#### Host Species

- Rabbit

#### Reactivity

- Human, Mouse, Rat

#### Applications

- WB, IHC, IF, ELISA

#### MW

- 20kD (Observed)

#### Isotype

- IgG

### | Recommended Dilution Ratios

**WB 1:500-1:2000**

**IHC 1:100-1:300**

**IF 1:200-1:1000**

**ELISA 1:40000**

**Not yet tested in other applications.**

### | Storage

**Storage\*** -15°C to -25°C/1 year (Do not lower than -25°C)

**Formulation** Liquid in PBS containing 50% glycerol, 0.5% BSA and 0.02% sodium azide.

### | Basic Information

**Clonality** Polyclonal

### | Immunogen Information

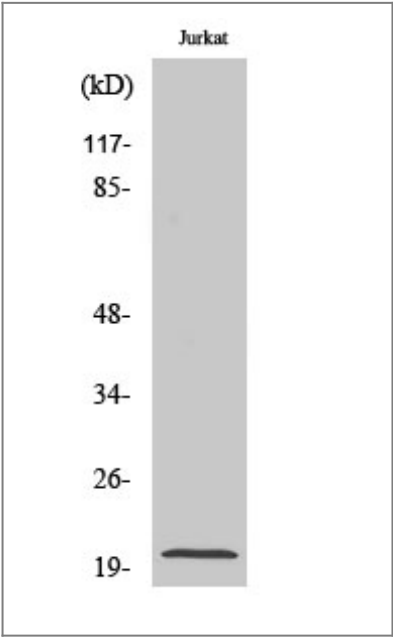
**Immunogen** The antiserum was produced against synthesized peptide derived from human FGF22. AA range: 71-120

**Specificity** FGF-22 Polyclonal Antibody detects endogenous levels of FGF-22 protein.

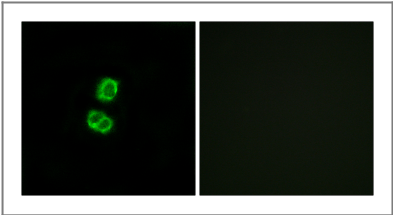
## | Target Information

Gene name	FGF22		
Protein Name	Fibroblast growth factor 22		
	Organism	Gene ID	UniProt ID
	Human	<a href="#">27006</a> ;	<a href="#">Q9HCT0</a> ;
	Mouse	<a href="#">67112</a> ;	<a href="#">Q9ESS2</a> ;
Cellular Localization	Secreted .		
Tissue specificity	Placenta,		
Function	Function:May be involved in hair development.,similarity:Belongs to the heparin-binding growth factors family.,subunit:Interacts with FGFBP1.,		

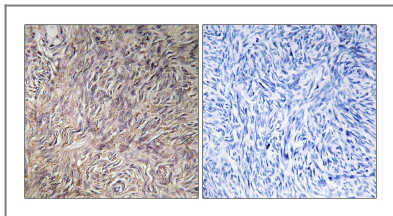
## | Validation Data



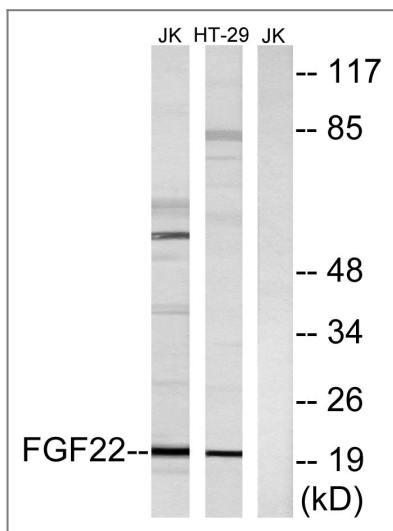
Western Blot analysis of various cells using FGF-22 Polyclonal Antibody diluted at 1:1000



Immunofluorescence analysis of MCF7 cells, using FGF22 Antibody. The picture on the right is blocked with the synthesized peptide.



Immunohistochemistry analysis of paraffin-embedded human ovary tissue, using FGF22 Antibody. The picture on the right is blocked with the synthesized peptide.



Western blot analysis of lysates from Jurkat and HT-29 cells, using FGF22 Antibody. The lane on the right is blocked with the synthesized peptide.

## Contact information

Orders: [order.cn@immunoway.com](mailto:order.cn@immunoway.com)  
 Support: [support.cn@immunoway.com](mailto:support.cn@immunoway.com)  
 Telephone: 400-8787-807(China)  
 Website: <http://www.immunoway.com.cn>  
 Address: 2200 Ringwood Ave San Jose, CA 95131 USA



Please scan the QR code to access additional product information:  
**FGF-22 Rabbit pAb**

For Research Use Only. Not for Use in Diagnostic Procedures.

[Antibody](#) | [ELISA Kits](#) | [Protein](#) | [Reagents](#)