

## FAST-1/2 Rabbit pAb

CatalogNo: YT1679

### Key Features

#### Host Species

- Rabbit

#### Reactivity

- Human, Mouse

#### Applications

- WB, IF, ELISA

#### MW

- 40kD (Observed)

#### Isotype

- IgG

### Recommended Dilution Ratios

**WB 1:500-1:2000**

**IF 1:200-1:1000**

**ELISA 1:10000**

**Not yet tested in other applications.**

### Storage

#### Storage\*

-15°C to -25°C/1 year (Do not lower than -25°C)

#### Formulation

Liquid in PBS containing 50% glycerol, 0.5% BSA and 0.02% sodium azide.

### Basic Information

#### Clonality

Polyclonal

### Immunogen Information

#### Immunogen

The antiserum was produced against synthesized peptide derived from human FOXH1. AA range: 10-59

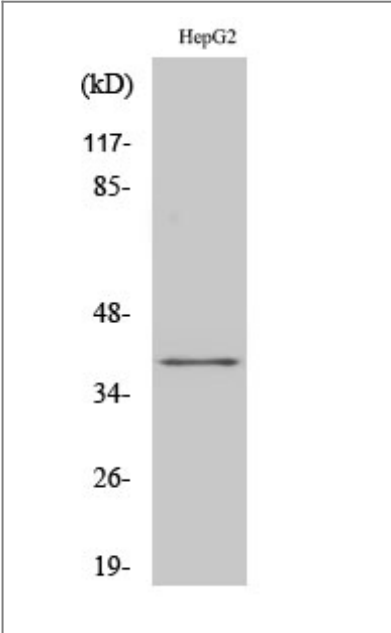
#### Specificity

FAST-1/2 Polyclonal Antibody detects endogenous levels of FAST-1/2 protein.

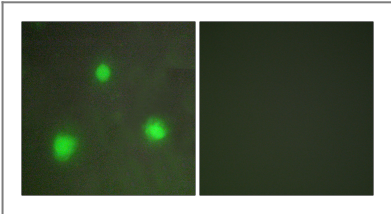
### Target Information

Gene name	FOXH1		
Protein Name	Forkhead box protein H1		
	Organism	Gene ID	UniProt ID
	Human	<a href="#">8928;</a>	<a href="#">O75593;</a>
	Mouse	<a href="#">14106;</a>	<a href="#">O88621;</a>
Cellular Localization	Nucleus.		
Tissue specificity	Ubiquitous.		
Function	Domain:The FM region is required for binding smad2/smad4 complexes. FM2 is more effective than FM1 and only interacts with phosphorylated smad2 that is in an activated smad complex.,Function:Transcriptional activator. Recognizes and binds to the DNA sequence 5'-TGT[GT][GT]ATT-3'. Required for induction of the goosecoid (GSC) promoter by TGF-beta or activin signaling. Forms a transcriptionally active complex containing FOXH1/SMAD2/SMAD4 on a site on the GSC promoter called TARE (TGF-beta/activin response element).,similarity:Contains 1 fork-head DNA-binding domain.,subunit:Interacts with the MH2 domains of SMAD2 and SMAD3.,tissue specificity:Ubiquitous.,		

Validation Data



Western Blot analysis of various cells using FAST-1/2 Polyclonal Antibody cells nucleus extracted by Minute TM Cytoplasmic and Nuclear Fractionation kit (SC-003,Inventbiotech,MN,USA).



Immunofluorescence analysis of A549 cells, using FOXH1 Antibody. The picture on the right is blocked with the synthesized peptide.

## | Contact information

Orders: order.cn@immunoway.com  
Support: support.cn@immunoway.com  
Telephone: 400-8787-807(China)  
Website: <http://www.immunoway.com.cn>  
Address: 2200 Ringwood Ave San Jose, CA 95131 USA



Please scan the QR code  
to access additional  
product information:  
**FAST-1/2 Rabbit  
pAb**

---

For Research Use Only. Not for Use in Diagnostic Procedures.

[Antibody](#) | [ELISA Kits](#) | [Protein](#) | [Reagents](#)