

FAF1 Rabbit pAb

CatalogNo: YT1658

Key Features

Host Species

- Rabbit

Reactivity

- Human, Mouse, Rat

Applications

- WB, ELISA

MW

- 75kD (Observed)

Isotype

- IgG

Recommended Dilution Ratios

WB 1:500-1:2000

ELISA 1:5000

Not yet tested in other applications.

Storage

Storage*

-15°C to -25°C/1 year (Do not lower than -25°C)

Formulation

Liquid in PBS containing 50% glycerol, 0.5% BSA and 0.02% sodium azide.

Basic Information

Clonality

Polyclonal

Immunogen Information

Immunogen

The antiserum was produced against synthesized peptide derived from human FAF1. AA range: 531-580

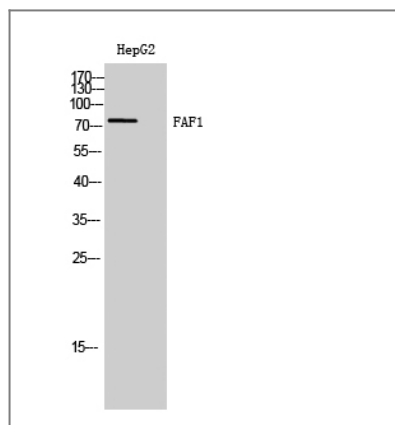
Specificity

FAF1 Polyclonal Antibody detects endogenous levels of FAF1 protein.

Target Information

Gene name	FAF1		
Protein Name	FAS-associated factor 1		
	Organism	Gene ID	UniProt ID
	Human	11124;	Q9UNN5;
	Mouse	14084;	P54731;
	Rat	140657;	Q924K2;
Cellular Localization	Nucleus .		
Tissue specificity	Most abundant in testis, slightly less abundant in skeletal muscle and heart, followed by prostate, thymus, ovary, small intestine, and colon. Not detected in the peripheral blood leukocytes.		
Function	Function:Potentiates but cannot initiate FAS-induced apoptosis.,similarity:Contains 1 UBX domain.,subunit:Specifically interacts with the cytoplasmic domain of FAS.,tissue specificity:Most abundant in testis, slightly less abundant in skeletal muscle and heart, followed by prostate, thymus, ovary, small intestine, and colon. Not detected in the peripheral blood leukocytes.,		

Validation Data



Western Blot analysis of HepG2 cells using FAF1 Polyclonal Antibody

Contact information

Orders: order.cn@immunoway.com
 Support: support.cn@immunoway.com
 Telephone: 400-8787-807(China)
 Website: <http://www.immunoway.com.cn>
 Address: 2200 Ringwood Ave San Jose, CA 95131 USA



Please scan the QR code to access additional product information:
FAF1 Rabbit pAb

