

## ERGIC-3 Rabbit pAb

CatalogNo: YT1620

### Key Features

#### Host Species

- Rabbit

#### Reactivity

- Human, Mouse

#### Applications

- WB, IHC, IF, ELISA

#### MW

- 43kD (Observed)

#### Isotype

- IgG

### Recommended Dilution Ratios

**WB 1:500-1:2000**

**IHC 1:100-1:300**

**IF 1:200-1:1000**

**ELISA 1:20000**

**Not yet tested in other applications.**

### Storage

**Storage\*** -15°C to -25°C/1 year (Do not lower than -25°C)

**Formulation** Liquid in PBS containing 50% glycerol, 0.5% BSA and 0.02% sodium azide.

### Basic Information

**Clonality** Polyclonal

### Immunogen Information

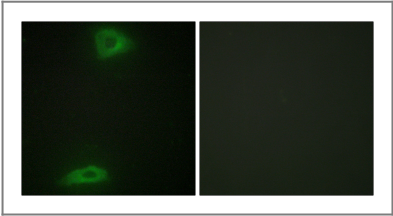
**Immunogen** The antiserum was produced against synthesized peptide derived from human ERGIC3. AA range: 321-370

**Specificity** ERGIC-3 Polyclonal Antibody detects endogenous levels of ERGIC-3 protein.

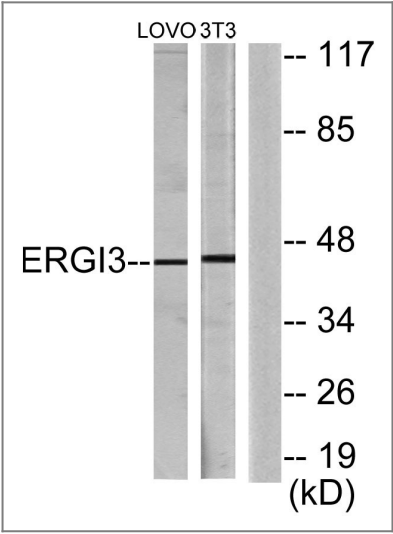
## | Target Information

Gene name	ERGIC3		
Protein Name	Endoplasmic reticulum-Golgi intermediate compartment protein 3		
	Organism	Gene ID	UniProt ID
	Human	<a href="#">51614</a> ;	<a href="#">Q9Y282</a> ;
	Mouse	<a href="#">66366</a> ;	<a href="#">Q9CQE7</a> ;
Cellular Localization	Endoplasmic reticulum-Golgi intermediate compartment membrane ; Multi-pass membrane protein . Golgi apparatus, cis-Golgi network membrane ; Multi-pass membrane protein . Endoplasmic reticulum membrane ; Multi-pass membrane protein . Cycles between the endoplasmic reticulum and the Golgi.		
Tissue specificity	Brain,Embryo,Fetal liver,Liver,Mammary gland,Skin,		
Function	Function:Possible role in transport between endoplasmic reticulum and Golgi.,similarity:Belongs to the ERGIC family.,subcellular location:Cycles between the endoplasmic reticulum and the Golgi.,subunit:Interacts with ERGIC1/ERGIC32.,		

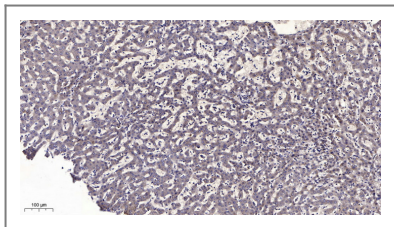
## | Validation Data



Immunofluorescence analysis of HepG2 cells, using ERG13 Antibody. The picture on the right is blocked with the synthesized peptide.



Western blot analysis of lysates from LOVO and NIH/3T3 cells, using ERG13 Antibody. The lane on the right is blocked with the synthesized peptide.



Immunohistochemical analysis of paraffin-embedded human liver cancer. 1, Antibody was diluted at 1:200(4° overnight). 2, Tris-EDTA,pH9.0 was used for antigen retrieval. 3,Secondary antibody was diluted at 1:200(room temperature, 45min).

## | Contact information

Orders: order.cn@immunoway.com  
Support: support.cn@immunoway.com  
Telephone: 400-8787-807(China)  
Website: <http://www.immunoway.com.cn>  
Address: 2200 Ringwood Ave San Jose, CA 95131 USA



Please scan the QR code  
to access additional  
product information:  
**ERGIC-3 Rabbit pAb**

---

For Research Use Only. Not for Use in Diagnostic Procedures.

[Antibody](#) | [ELISA Kits](#) | [Protein](#) | [Reagents](#)