

## Ephrin-A5 Rabbit pAb

CatalogNo: YT1593

### | Key Features

#### Host Species

- Rabbit

#### Reactivity

- Human, Mouse, Rat

#### Applications

- WB, IHC, IF, ELISA

#### MW

- 25kD (Observed)

#### Isotype

- IgG

### | Recommended Dilution Ratios

**WB 1:500-1:2000**

**IHC 1:100-1:300**

**IF 1:200-1:1000**

**ELISA 1:40000**

**Not yet tested in other applications.**

### | Storage

**Storage\*** -15°C to -25°C/1 year (Do not lower than -25°C)

**Formulation** Liquid in PBS containing 50% glycerol, 0.5% BSA and 0.02% sodium azide.

### | Basic Information

**Clonality** Polyclonal

### | Immunogen Information

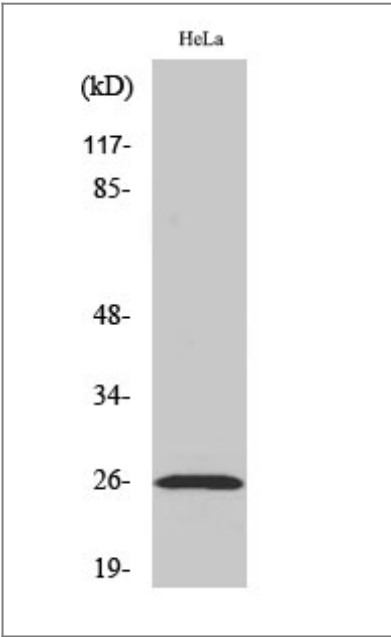
**Immunogen** The antiserum was produced against synthesized peptide derived from human EFNA5. AA range:31-80

**Specificity** Ephrin-A5 Polyclonal Antibody detects endogenous levels of Ephrin-A5 protein.

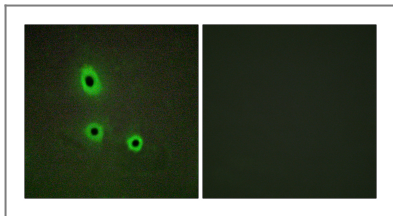
## Target Information

Gene name	EFNA5		
Protein Name	Ephrin-A5		
	Organism	Gene ID	UniProt ID
	Human	<a href="#">1946</a> ;	<a href="#">P52803</a> ;
	Mouse	<a href="#">13640</a> ;	<a href="#">O08543</a> ;
	Rat	<a href="#">116683</a> ;	<a href="#">P97605</a> ;
Cellular Localization	Cell membrane ; Lipid-anchor, GPI-anchor . Membrane, caveola ; Lipid-anchor, GPI-anchor . Compartmentalized in discrete caveolae-like membrane microdomains.		
Tissue specificity	Brain,		
Function	Function:May function actively to stimulate axon fasciculation. Induces compartmentalized signaling within a caveolae-like membrane microdomain when bound to the extracellular domain of its cognate receptor. This signaling event requires the activity of the Fyn tyrosine kinase.,similarity:Belongs to the ephrin family.,subcellular location:Compartmentalized in discrete caveolae-like membrane microdomains.,subunit:Binds to EPHB2 (By similarity). Binds to the receptor tyrosine kinases EPHA2, EPHA3 and EPHB1.,		

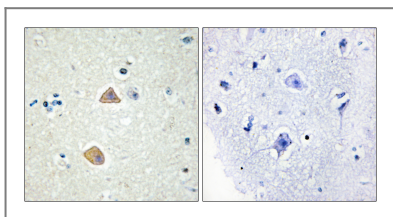
## Validation Data



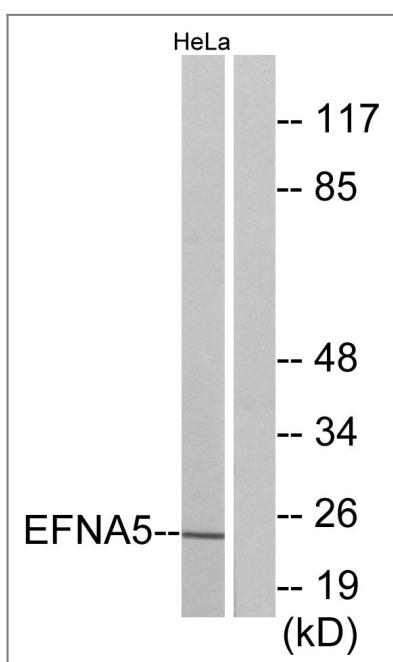
Western Blot analysis of various cells using Ephrin-A5 Polyclonal Antibody



Immunofluorescence analysis of A549 cells, using EFNA5 Antibody. The picture on the right is blocked with the synthesized peptide.



Immunohistochemistry analysis of paraffin-embedded human brain tissue, using EFNA5 Antibody. The picture on the right is blocked with the synthesized peptide.



Western blot analysis of lysates from HeLa cells, using EFNA5 Antibody. The lane on the right is blocked with the synthesized peptide.

## Contact information

Orders: [order.cn@immunoway.com](mailto:order.cn@immunoway.com)  
 Support: [support.cn@immunoway.com](mailto:support.cn@immunoway.com)  
 Telephone: 400-8787-807(China)  
 Website: <http://www.immunoway.com.cn>  
 Address: 2200 Ringwood Ave San Jose, CA 95131 USA



Please scan the QR code  
to access additional  
product information:  
**Ephrin-A5 Rabbit  
pAb**

For Research Use Only. Not for Use in Diagnostic Procedures.

[Antibody](#) | [ELISA Kits](#) | [Protein](#) | [Reagents](#)