

## Ephrin-A3 Rabbit pAb

CatalogNo: YT1591

### Key Features

#### Host Species

- Rabbit

#### Reactivity

- Human, Mouse, Rat

#### Applications

- WB, IHC, IF, ELISA

#### MW

- 38kD (Observed)

#### Isotype

- IgG

### Storage

**Storage\*** -15°C to -25°C/1 year (Do not lower than -25°C)

**Formulation** Liquid in PBS containing 50% glycerol, 0.5% BSA and 0.02% sodium azide.

### Recommended Dilution Ratios

**WB 1:500-1:2000**

**IHC 1:100-1:300**

**IF 1:200-1:1000**

**ELISA 1:10000**

**Not yet tested in other applications.**

### Basic Information

**Clonality** Polyclonal

### Immunogen Information

**Immunogen** The antiserum was produced against synthesized peptide derived from human EFNA3. AA range:161-210

**Specificity** Ephrin-A3 Polyclonal Antibody detects endogenous levels of Ephrin-A3 protein.

---

## | Target Information

**Gene name** EFNA3 EFL2 EPLG3 LERK3

**Protein Name** Ephrin-A3

Organism	Gene ID	UniProt ID
Human	<a href="#">1944;</a>	<a href="#">P52797;</a>
Mouse	<a href="#">13638;</a>	<a href="#">O08545;</a>

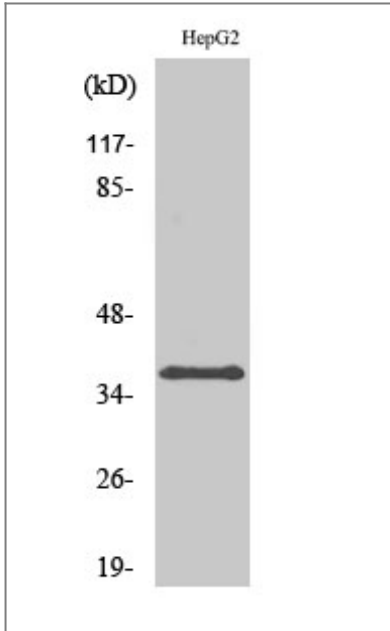
**Cellular Localization** Cell membrane; Lipid-anchor, GPI-anchor.

**Tissue specificity** Expressed in brain, skeletal muscle, spleen, thymus, prostate, testis, ovary, small intestine, and peripheral blood leukocytes.

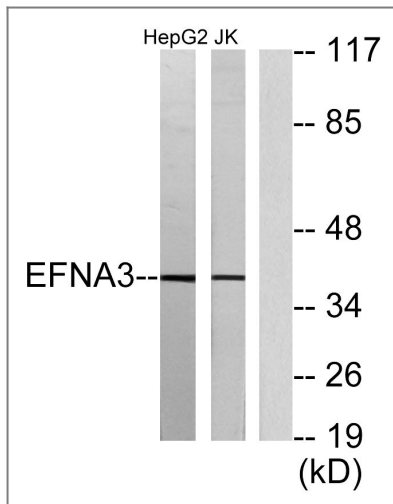
**Function** similarity:Belongs to the ephrin family.,tissue specificity:Expressed in brain, skeletal muscle, spleen, thymus, prostate, testis, ovary, small intestine, and peripheral blood leukocytes.,

---

## | Validation Data



Western Blot analysis of various cells using Ephrin-A3 Polyclonal Antibody



Western blot analysis of lysates from HepG2 and Jurkat cells, using EFNA3 Antibody. The lane on the right is blocked with the synthesized peptide.

## Contact information

Orders: [order.cn@immunoway.com](mailto:order.cn@immunoway.com)  
Support: [support.cn@immunoway.com](mailto:support.cn@immunoway.com)  
Telephone: 400-8787-807(China)  
Website: <http://www.immunoway.com.cn>  
Address: 2200 Ringwood Ave San Jose, CA 95131 USA



Please scan the QR code to access additional product information:  
**Ephrin-A3 Rabbit pAb**

For Research Use Only. Not for Use in Diagnostic Procedures.

[Antibody](#) | [ELISA Kits](#) | [Protein](#) | [Reagents](#)