

## EphA5 Rabbit pAb

CatalogNo: YT1579

### | Key Features

#### Host Species

- Rabbit

#### Reactivity

- Human, Mouse, Rat

#### Applications

- WB, ELISA

#### MW

- 110kD (Observed)

#### Isotype

- IgG

### | Recommended Dilution Ratios

**WB 1:500-1:2000**

**ELISA 1:20000**

**Not yet tested in other applications.**

### | Storage

#### Storage\*

-15°C to -25°C/1 year (Do not lower than -25°C)

#### Formulation

Liquid in PBS containing 50% glycerol, 0.5% BSA and 0.02% sodium azide.

### | Basic Information

#### Clonality

Polyclonal

### | Immunogen Information

#### Immunogen

The antiserum was produced against synthesized peptide derived from human EPHA5. AA range: 471-520

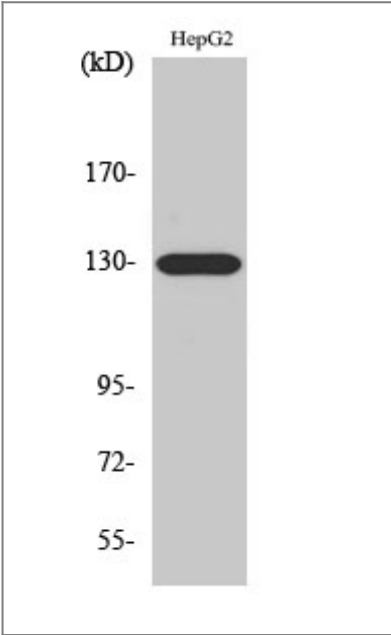
#### Specificity

EphA5 Polyclonal Antibody detects endogenous levels of EphA5 protein.

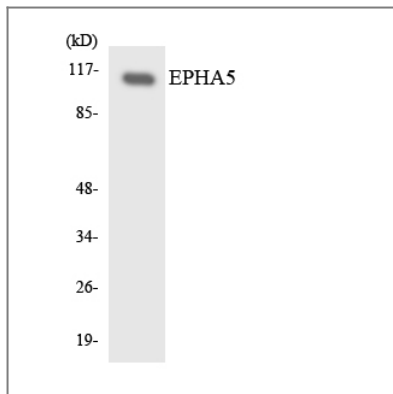
### | Target Information

Gene name	EPHA5		
Protein Name	Ephrin type-A receptor 5		
	Organism	Gene ID	UniProt ID
	Human	<a href="#">2044;</a>	<a href="#">P54756;</a>
	Mouse	<a href="#">13839;</a>	<a href="#">Q60629;</a>
	Rat	<a href="#">79208;</a>	<a href="#">P54757;</a>
Cellular Localization	Cell membrane ; Single-pass type I membrane protein . Cell projection, axon . Cell projection, dendrite .		
Tissue specificity	Almost exclusively expressed in the nervous system in cortical neurons, cerebellar Purkinje cells and pyramidal neurons within the cortex and hippocampus. Display an increasing gradient of expression from the forebrain to hindbrain and spinal cord.		
Function	Alternative products:Additional isoforms seem to exist,Catalytic activity:ATP + a [protein]-L-tyrosine = ADP + a [protein]-L-tyrosine phosphate.,Function:Receptor for members of the ephrin-A family. Binds to ephrin-A1, -A2, -A3, -A4 and -A5.,similarity:Belongs to the protein kinase superfamily. Tyr protein kinase family.,similarity:Belongs to the protein kinase superfamily. Tyr protein kinase family. Ephrin receptor subfamily.,similarity:Contains 1 protein kinase domain.,similarity:Contains 1 SAM (sterile alpha motif) domain.,similarity:Contains 2 fibronectin type-III domains.,tissue specificity:Almost exclusively expressed in the nervous system.,		

| Validation Data



Western Blot analysis of A549 cells using EphA5 Polyclonal Antibody



Western blot analysis of the lysates from HeLa cells using EPHA5 antibody.

## Contact information

Orders: [order.cn@immunoway.com](mailto:order.cn@immunoway.com)  
Support: [support.cn@immunoway.com](mailto:support.cn@immunoway.com)  
Telephone: 400-8787-807(China)  
Website: <http://www.immunoway.com.cn>  
Address: 2200 Ringwood Ave San Jose, CA 95131 USA



Please scan the QR code  
to access additional  
product information:

**EphA5 Rabbit pAb**

For Research Use Only. Not for Use in Diagnostic Procedures.

[Antibody](#) | [ELISA Kits](#) | [Protein](#) | [Reagents](#)