

## EphA3 Rabbit pAb

CatalogNo: YT1577

### | Key Features

#### Host Species

- Rabbit

#### Reactivity

- Human, Mouse, Rat

#### Applications

- WB, ELISA

#### MW

- 100kD (Observed)

#### Isotype

- IgG

### | Recommended Dilution Ratios

**WB 1:500-1:2000**

**ELISA 1:10000**

**Not yet tested in other applications.**

### | Storage

**Storage\*** -15°C to -25°C/1 year (Do not lower than -25°C)

**Formulation** Liquid in PBS containing 50% glycerol, 0.5% BSA and 0.02% sodium azide.

### | Basic Information

**Clonality** Polyclonal

### | Immunogen Information

**Immunogen** Synthesized peptide derived from EphA3 . at AA range: 540-620

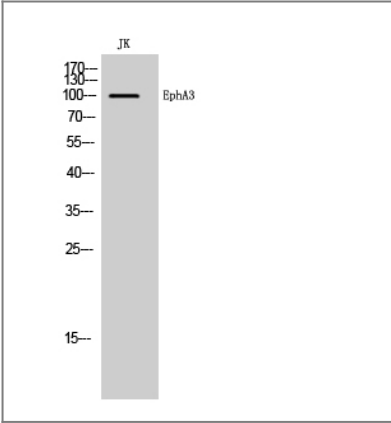
**Specificity** EphA3 Polyclonal Antibody detects endogenous levels of EphA3 protein.

### | Target Information

**Gene name** EPHA3 ETK ETK1 HEK TYRO4

<b>Protein Name</b>	Ephrin type-A receptor 3		
	<b>Organism</b>	<b>Gene ID</b>	<b>UniProt ID</b>
	Human	<a href="#">2042;</a>	<a href="#">P29320;</a>
	Mouse		<a href="#">P29319;</a>
	Rat	<a href="#">29210;</a>	<a href="#">O08680;</a>
<b>Cellular Localization</b>	[Isoform 1]: Cell membrane ; Single-pass type I membrane protein .; [Isoform 2]: Secreted .		
<b>Tissue specificity</b>	Widely expressed. Highest level in placenta.		
<b>Function</b>	Catalytic activity:ATP + a [protein]-L-tyrosine = ADP + a [protein]-L-tyrosine phosphate.,Disease:Defects in EPHA3 may be a cause of colorectal cancer (CRC) [MIM:114500].,Function:Receptor for members of the ephrin-A family. Binds to ephrin-A2, -A3, -A4 and -A5. Could play a role in lymphoid function.,similarity:Belongs to the protein kinase superfamily. Tyr protein kinase family.,similarity:Belongs to the protein kinase superfamily. Tyr protein kinase family. Ephrin receptor subfamily.,similarity:Contains 1 protein kinase domain.,similarity:Contains 1 SAM (sterile alpha motif) domain.,similarity:Contains 2 fibronectin type-III domains.,tissue specificity:Widely expressed. Highest level in placenta.,		

Validation Data



Western Blot analysis of JK cells using EphA3 Polyclonal Antibody

Contact information

Orders:

order.cn@immunoway.com

Support:

support.cn@immunoway.com

Telephone:

400-8787-807(China)

Website:

http://www.immunoway.com.cn

Address:

2200 Ringwood Ave San Jose, CA 95131 USA



Please scan the QR code to access additional product information:

EphA3 Rabbit pAb

