

Emp Rabbit pAb

CatalogNo: YT1543

Key Features

Host Species

- Rabbit

Reactivity

- Human, Mouse, Rat

Applications

- WB, IHC, IF, ELISA

MW

- 45kD (Observed)

Isotype

- IgG

Storage

Storage* -15°C to -25°C/1 year (Do not lower than -25°C)

Formulation Liquid in PBS containing 50% glycerol, 0.5% BSA and 0.02% sodium azide.

Recommended Dilution Ratios

WB 1:500-1:2000

IHC 1:100-1:300

ELISA 1:20000

IF 1:50-200

Basic Information

Clonality Polyclonal

Immunogen Information

Immunogen The antiserum was produced against synthesized peptide derived from human MAEA. AA range:181-230

Specificity Emp Polyclonal Antibody detects endogenous levels of Emp protein.

Target Information

Gene name MAEA

Protein Name Macrophage erythroblast attacher

| Organism | Gene ID | UniProt ID |
|----------|--------------------------|--------------------------|
| Human | 10296 ; | Q7L5Y9 ; |
| Mouse | 59003 ; | Q4VC33 ; |
| Rat | 298982 ; | Q5RKJ1 ; |

Cellular Localization

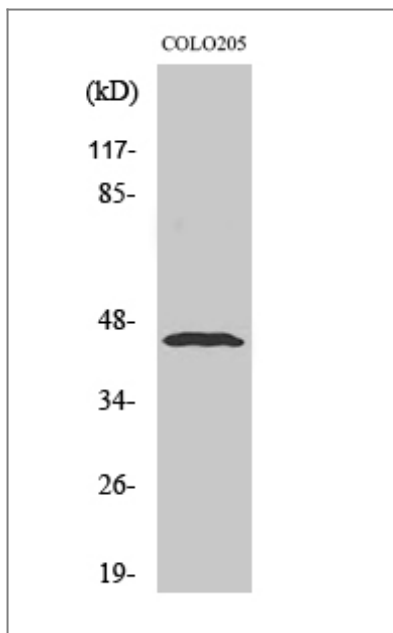
Cytoplasm . Nucleus , nucleoplasm . Nucleus matrix . Cell membrane . Cytoplasm , cytoskeleton . Detected in a nuclear , speckled-like pattern (PubMed:16510120) . Localized with condensed chromatin at prophase; Detected in nuclear spindle poles at metaphase and in the contractile ring during telophase and cytokinesis (PubMed:16510120) . Present in cytoplasm , nuclear matrix and at the cell surface in macrophages; predominantly nuclear in immature macrophages and predominantly detected at the cell surface in mature macrophages. Colocalizes with F-actin in macrophages (By similarity) . .

Tissue specificity Detected at macrophage membranes (at protein level) . Ubiquitous.

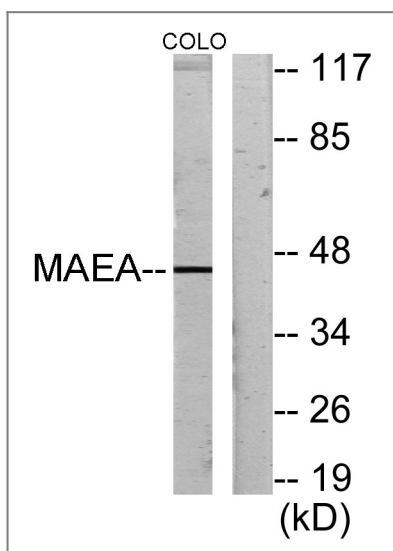
Function

developmental stage:Localized with condensed chromatin at prophase; Detected in nuclear spindle poles at metaphase and in the contractile ring during telophase and cytokinesis. ,Function:Play a role in erythroblast enucleation and in the development of the mature macrophages. Mediates the attachment of erythroid cell to mature macrophages , in correlation with the presence of MAEA at cell surface of mature macrophages; This MAEA-mediated contact inhibits erythroid cells apoptosis. Participates to erythroblastic island formation , which is the functional unit of definitive erythropoiesis. Associates with F-actin to regulate actin distribution in erythroblasts and macrophages. May contribute to nuclear architecture and cells division events. ,similarity:Contains 1 CTLH domain. ,similarity:Contains 1 LisH domain. ,subcellular location:Localized as nuclear speckled-like pattern. ,subunit:Form a complex with F-actin. ,tissue specificity:Ubiquitous. ,

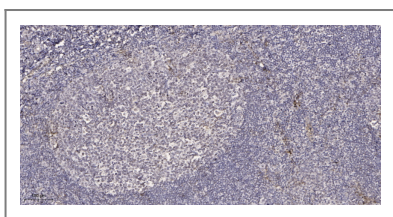
| Validation Data



Western Blot analysis of various cells using Emp Polyclonal Antibody diluted at 1:500



Western blot analysis of lysates from COLO205 cells, using MAEA Antibody. The lane on the right is blocked with the synthesized peptide.



Immunohistochemical analysis of paraffin-embedded human tonsil. 1, Antibody was diluted at 1:200 (4°C overnight). 2, Tris-EDTA, pH9.0 was used for antigen retrieval. 3, Secondary antibody was diluted at 1:200 (room temperature, 45min).

Contact information

Orders: order.cn@immunoway.com
 Support: support.cn@immunoway.com
 Telephone: 400-8787-807(China)
 Website: <http://www.immunoway.com.cn>
 Address: 2200 Ringwood Ave San Jose, CA 95131 USA



Please scan the QR code to access additional product information:
Emp Rabbit pAb

