

ELOVL2 Rabbit pAb

CatalogNo: YT1536

Key Features

Host Species

- Rabbit

Reactivity

- Human,Rat,Mouse,

Applications

- IHC,IF,ELISA

MW

- 35kD (Calculated)

Isotype

- IgG

Recommended Dilution Ratios

IHC 1:100-1:300

ELISA 1:10000

IF 1:50-200

Storage

Storage* -15°C to -25°C/1 year(Do not lower than -25°C)

Formulation Liquid in PBS containing 50% glycerol, 0.5% BSA and 0.02% sodium azide.

Basic Information

Clonality Polyclonal

Immunogen Information

Immunogen The antiserum was produced against synthesized peptide derived from human ELOVL2. AA range:250-296

Specificity ELOVL2 Polyclonal Antibody detects endogenous levels of ELOVL2 protein.

Target Information

Gene name ELOVL2

Protein Name Elongation of very long chain fatty acids protein 2

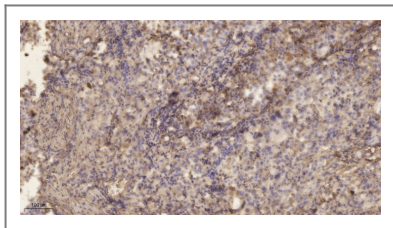
Organism	Gene ID	UniProt ID
Human	54898 ;	Q9NXB9 ;
Mouse		Q9JLJ4 ;

Cellular Localization Endoplasmic reticulum membrane ; Multi-pass membrane protein .

Tissue specificity Liver and testis.

Function Domain:The di-lysine motif confers endoplasmic reticulum localization for type I membrane proteins.,Function:Could be implicated in tissue-specific synthesis of very long chain fatty acids and sphingolipids. May catalyze one or both of the reduction reaction in fatty acid elongation, i.e., conversion of beta-ketoacyl CoA to beta-hydroxyacyl CoA or reduction of trans-2-enoyl CoA to the saturated acyl CoA derivative.,similarity:Belongs to the ELO family.,

| Validation Data



Immunohistochemical analysis of paraffin-embedded human lung cancer. 1, Antibody was diluted at 1:200(4° overnight). 2, Tris-EDTA,pH9.0 was used for antigen retrieval. 3,Secondary antibody was diluted at 1:200(room temperature, 45min).

| Contact information

Orders: order.cn@immunoway.com
Support: support.cn@immunoway.com
Telephone: 400-8787-807(China)
Website: <http://www.immunoway.com.cn>
Address: 2200 Ringwood Ave San Jose, CA 95131 USA



Please scan the QR code to access additional product information:
ELOVL2 Rabbit pAb

For Research Use Only. Not for Use in Diagnostic Procedures.

[Antibody](#) | [ELISA Kits](#) | [Protein](#) | [Reagents](#)