

Dynein IC2 Rabbit pAb

CatalogNo: YT1430 **Orthogonal Validated** 

Key Features

Host Species

- Rabbit

Reactivity

- Human, Mouse, Rat, Chicken

Applications

- WB, ELISA

MW

- 70kD (Observed)

Isotype

- IgG

Storage

Storage* -15°C to -25°C/1 year (Do not lower than -25°C)**Formulation** Liquid in PBS containing 50% glycerol, 0.5% BSA and 0.02% sodium azide.

Recommended Dilution Ratios

WB 1:500-1:2000**ELISA 1:10000****Not yet tested in other applications.**

Basic Information

Clonality Polyclonal

Immunogen Information

Immunogen The antiserum was produced against synthesized peptide derived from human DNAI2. AA range: 71-120**Specificity** Dynein IC2 Polyclonal Antibody detects endogenous levels of Dynein IC2 protein.

Target Information

Gene name DNAI2

Protein Name Dynein intermediate chain 2 axonemal

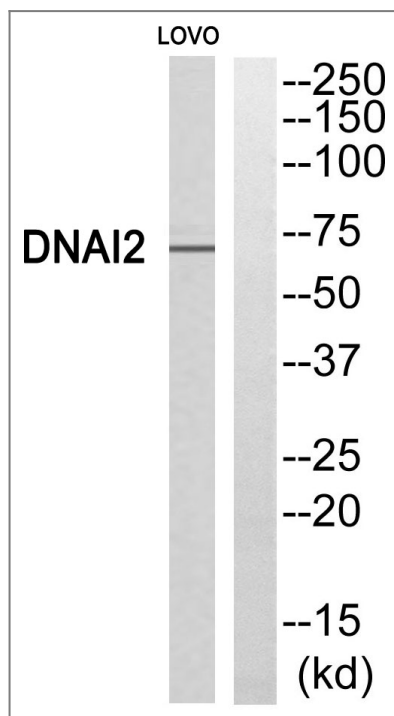
Organism	Gene ID	UniProt ID
Human	64446;	Q9GZS0;
Mouse	432611;	A2AC93;
Rat	360654;	Q66HC9;

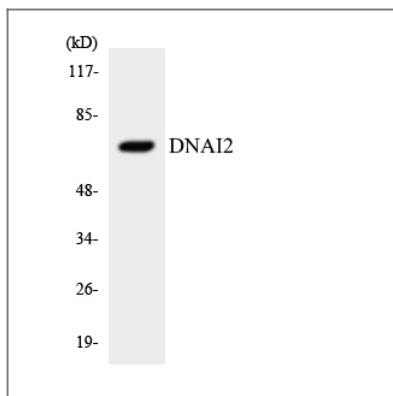
Cellular Localization Cytoplasm, cytoskeleton, cilium axoneme . Dynein axonemal particle . Located in the proximal region of respiratory cilia. .

Tissue specificity Highly expressed in trachea and testis. Expressed in respiratory ciliated cells (at protein level) (PubMed:33139725).

Function Disease:Defects in DNAI2 are the cause of primary ciliary dyskinesia type 9 (CILD9) [MIM:612444]. CILD is an autosomal recessive disorder characterized by axonemal abnormalities of motile cilia. Respiratory infections leading to chronic inflammation and bronchiectasis are recurrent, due to defects in the respiratory cilia; reduced fertility is often observed in male patients due to abnormalities of sperm tails. Half of the patients exhibit situs inversus, due to dysfunction of monocilia at the embryonic node and randomization of left-right body asymmetry. Primary ciliary dyskinesia associated with situs inversus is referred to as Kartagener syndrome.,Function:Part of the dynein complex of respiratory cilia.,sequence Caution:Intron retention.,similarity:Belongs to the dynein intermediate chain family.,similarity:Contains 5 WD repeats.,subunit:Consists of at least two heavy chains and a number of intermediate and light chains. Interacts with KTU.,tissue specificity:Highly expressed in trachea and testis.,

Validation Data





Western blot analysis of the lysates from RAW264.7 cells using DNAI2 antibody.

Contact information

Orders: order.cn@immunoway.com
Support: support.cn@immunoway.com
Telephone: 400-8787-807(China)
Website: <http://www.immunoway.com.cn>
Address: 2200 Ringwood Ave San Jose, CA 95131 USA



Please scan the QR code to access additional product information:
Dynein IC2 Rabbit pAb

For Research Use Only. Not for Use in Diagnostic Procedures.

[Antibody](#) | [ELISA Kits](#) | [Protein](#) | [Reagents](#)