

DR4 Rabbit pAb

CatalogNo: YT1410

Key Features

Host Species

- Rabbit

Reactivity

- Human, Monkey

Applications

- WB, IF, ELISA

MW

- 50kD (Observed)

Isotype

- IgG

Recommended Dilution Ratios

WB 1:500-1:2000

IF 1:200-1:1000

ELISA 1:5000

Not yet tested in other applications.

Storage

Storage*

-15°C to -25°C/1 year (Do not lower than -25°C)

Formulation

Liquid in PBS containing 50% glycerol, 0.5% BSA and 0.02% sodium azide.

Basic Information

Clonality

Polyclonal

Immunogen Information

Immunogen

The antiserum was produced against synthesized peptide derived from human TNFRSF10A. AA range: 401-450

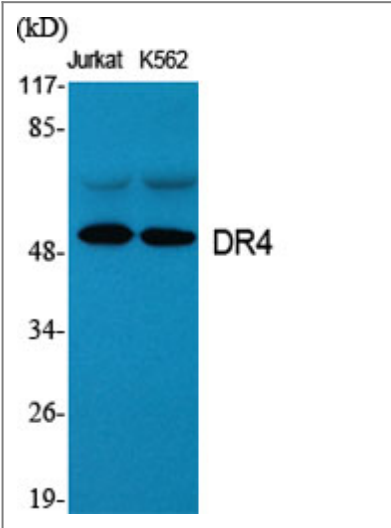
Specificity

DR4 Polyclonal Antibody detects endogenous levels of DR4 protein.

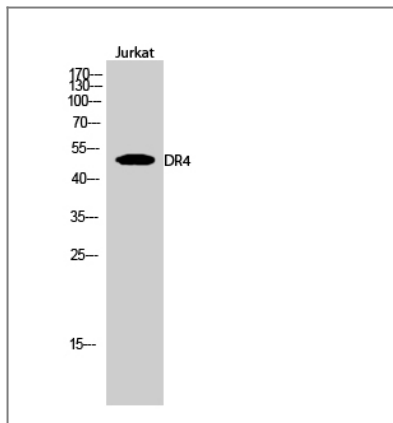
Target Information

| | | | |
|-----------------------|--|------------------------|--------------------------|
| Gene name | TNFRSF10A | | |
| Protein Name | Tumor necrosis factor receptor superfamily member 10A | | |
| | Organism | Gene ID | UniProt ID |
| | Human | 8797 ; | O00220 ; |
| Cellular Localization | Cell membrane ; Single-pass type I membrane protein . Membrane raft . Cytoplasm, cytosol . Palmitoylation is required for association with membranes. . | | |
| Tissue specificity | Widely expressed. High levels are found in spleen, peripheral blood leukocytes, small intestine and thymus, but also in K-562 erythroleukemia cells, MCF-7 breast carcinoma cells and activated T-cells. | | |
| Function | Function:Receptor for the cytotoxic ligand TNFSF10/TRAIL. The adapter molecule FADD recruits caspase-8 to the activated receptor. The resulting death-inducing signaling complex (DISC) performs caspase-8 proteolytic activation which initiates the subsequent cascade of caspases (aspartate-specific cysteine proteases) mediating apoptosis. Promotes the activation of NF-kappa-B.,similarity:Contains 1 death domain.,similarity:Contains 3 TNFR-Cys repeats.,subunit:Can interact with TRADD and RIP. Interacts with ARAP1.,tissue specificity:Widely expressed. High levels are found in spleen, peripheral blood leukocytes, small intestine and thymus, but also in K562 erythroleukemia cells, MCF7 breast carcinoma cells and activated T-cells., | | |

Validation Data



Western Blot analysis of various cells using DR4 Polyclonal Antibody



Western Blot analysis of Jurkat cells using DR4 Polyclonal Antibody

Contact information

Orders: order.cn@immunoway.com
Support: support.cn@immunoway.com
Telephone: 400-8787-807(China)
Website: <http://www.immunoway.com.cn>
Address: 2200 Ringwood Ave San Jose, CA 95131 USA



Please scan the QR code
to access additional
product information:
DR4 Rabbit pAb

For Research Use Only. Not for Use in Diagnostic Procedures.

[Antibody](#) | [ELISA Kits](#) | [Protein](#) | [Reagents](#)