

## DPF2 Rabbit pAb

CatalogNo: YT1408

### | Key Features

#### Host Species

- Rabbit

#### Reactivity

- Human, Mouse

#### Applications

- WB, IHC, IF, ELISA

#### MW

- 44kD (Observed)

#### Isotype

- IgG

### | Recommended Dilution Ratios

**WB 1:500-1:2000**

**IHC 1:100-1:300**

**IF 1:200-1:1000**

**ELISA 1:10000**

**Not yet tested in other applications.**

### | Storage

**Storage\*** -15°C to -25°C/1 year (Do not lower than -25°C)

**Formulation** Liquid in PBS containing 50% glycerol, 0.5% BSA and 0.02% sodium azide.

### | Basic Information

**Clonality** Polyclonal

### | Immunogen Information

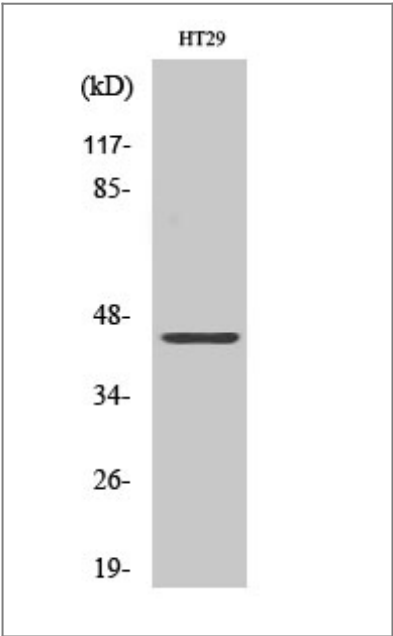
**Immunogen** The antiserum was produced against synthesized peptide derived from human REQU. AA range:151-200

**Specificity** DPF2 Polyclonal Antibody detects endogenous levels of DPF2 protein.

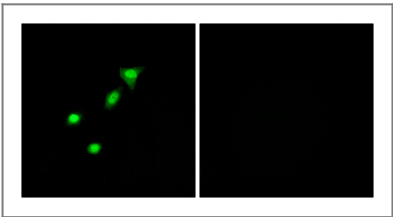
## | Target Information

Gene name	DPF2		
Protein Name	Zinc finger protein ubi-d4		
	Organism	Gene ID	UniProt ID
	Human	<a href="#">5977</a> ;	<a href="#">Q92785</a> ;
	Mouse	<a href="#">19708</a> ;	<a href="#">Q61103</a> ;
Cellular Localization	Nucleus . Cytoplasm .		
Tissue specificity	Ubiquitous.		
Function	Function:May be a transcription factor required for the apoptosis response following survival factor withdrawal from myeloid cells. Might also have a role in the development and maturation of lymphoid cells.,similarity:Belongs to the requiem/DPF family.,similarity:Contains 1 C2H2-type zinc finger.,similarity:Contains 2 PHD-type zinc fingers.,subcellular location:30% nuclear. 70% cytoplasmic.,tissue specificity:Ubiquitous.,		

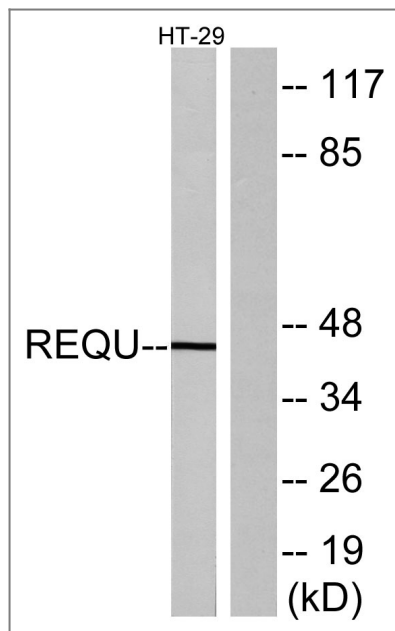
## | Validation Data



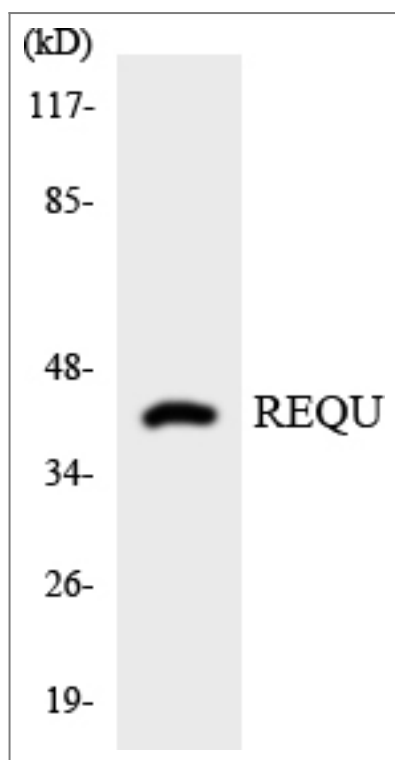
Western Blot analysis of various cells using DPF2 Polyclonal Antibody



Immunofluorescence analysis of A549 cells, using REQU Antibody. The picture on the right is blocked with the synthesized peptide.



Western blot analysis of lysates from HT-29 cells, using REQU Antibody. The lane on the right is blocked with the synthesized peptide.



Western blot analysis of the lysates from RAW264.7 cells using REQU antibody.

## Contact information

Orders: order.cn@immunoway.com  
 Support: support.cn@immunoway.com  
 Telephone: 400-8787-807(China)  
 Website: <http://www.immunoway.com.cn>  
 Address: 2200 Ringwood Ave San Jose, CA 95131 USA



Please scan the QR code to access additional product information:  
**DPF2 Rabbit pAb**

