

## DNA pol $\gamma$ 2 Rabbit pAb

CatalogNo: YT1370

### Key Features

#### Host Species

- Rabbit

#### Reactivity

- Human, Mouse

#### Applications

- IHC, IF, ELISA

#### MW

- 55kD (Calculated)

#### Isotype

- IgG

### Recommended Dilution Ratios

IHC 1:100-1:300

ELISA 1:20000

IF 1:50-200

### Storage

#### Storage\*

-15°C to -25°C/1 year (Do not lower than -25°C)

#### Formulation

Liquid in PBS containing 50% glycerol, 0.5% BSA and 0.02% sodium azide.

### Basic Information

#### Clonality

Polyclonal

### Immunogen Information

#### Immunogen

The antiserum was produced against synthesized peptide derived from human POLG2. AA range: 291-340

#### Specificity

DNA pol  $\gamma$ 2 Polyclonal Antibody detects endogenous levels of DNA pol  $\gamma$ 2 protein.

### Target Information

**Gene name** POLG2

**Protein Name** DNA polymerase subunit gamma-2 mitochondrial

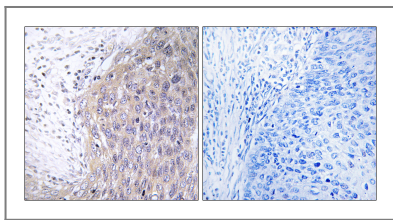
Organism	Gene ID	UniProt ID
Human	<a href="#">11232</a> ;	<a href="#">Q9UHN1</a> ;
Mouse		<a href="#">Q9QZM2</a> ;

**Cellular Localization** Mitochondrion.

**Tissue specificity** Cerebellum,Cervix,Ovary,

**Function** Catalytic activity:Deoxynucleoside triphosphate + DNA(n) = diphosphate + DNA(n+1).,Disease:Defects in POLG2 are the cause of progressive external ophthalmoplegia with mitochondrial DNA deletions autosomal dominant type 4 (PEOA4) [MIM:610131]. Progressive external ophthalmoplegia is characterized by progressive weakness of ocular muscles and levator muscle of the upper eyelid. In a minority of cases, it is associated with skeletal myopathy, which predominantly involves axial or proximal muscles and which causes abnormal fatigability and even permanent muscle weakness. Ragged-red fibers and atrophy are found on muscle biopsy. A large proportion of chronic ophthalmoplegias are associated with other symptoms, leading to a multisystemic pattern of this disease. Additional symptoms are variable, and may include cataracts, hearing loss, sensory axonal neuropathy, ataxia, depression, hypogonadism, and parkinsonism.,Function:Mitochondrial polymerase processivity subunit. Stimulates the polymerase and exonuclease activities, and increases the processivity of the enzyme. Binds to ss-DNA.,subunit:Heterotrimer composed of a catalytic subunit and an homodimer of accessory subunits.,

## Validation Data



Immunohistochemistry analysis of paraffin-embedded human cervix carcinoma tissue, using POLG2 Antibody. The picture on the right is blocked with the synthesized peptide.

## Contact information

Orders: order.cn@immunoway.com  
Support: support.cn@immunoway.com  
Telephone: 400-8787-807(China)  
Website: <http://www.immunoway.com.cn>  
Address: 2200 Ringwood Ave San Jose, CA 95131 USA



Please scan the QR code to access additional product information:  
**DNA pol γ2 Rabbit pAb**

