

## DLEC1 Rabbit pAb

CatalogNo: YT1357

### | Key Features

#### Host Species

- Rabbit

#### Reactivity

- Human,Rat,Mouse,

#### Applications

- IHC,IF,ELISA

#### MW

- 196kD (Calculated)

#### Isotype

- IgG

### | Recommended Dilution Ratios

**IHC 1:100-1:300**

**IF 1:200-1:1000**

**ELISA 1:10000**

**Not yet tested in other applications.**

### | Storage

#### Storage\*

-15°C to -25°C/1 year(Do not lower than -25°C)

#### Formulation

Liquid in PBS containing 50% glycerol, 0.5% BSA and 0.02% sodium azide.

### | Basic Information

#### Clonality

Polyclonal

### | Immunogen Information

#### Immunogen

The antiserum was produced against synthesized peptide derived from human DLEC1.  
AA range:1-50

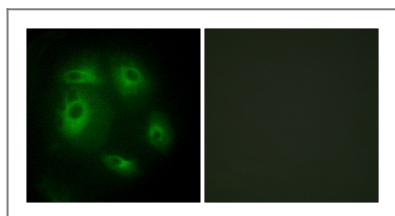
#### Specificity

DLEC1 Polyclonal Antibody detects endogenous levels of DLEC1 protein.

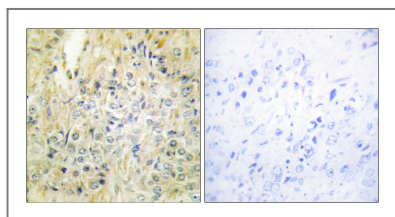
### | Target Information

<b>Gene name</b>	DLEC1		
<b>Protein Name</b>	Deleted in lung and esophageal cancer protein 1		
	<b>Organism</b>	<b>Gene ID</b>	<b>UniProt ID</b>
	Human	<a href="#">9940;</a>	<a href="#">Q9Y238;</a>
	Mouse		<a href="#">Q8BLA1;</a>
<b>Cellular Localization</b>	Cytoplasm .		
<b>Tissue specificity</b>	Expressed in all tissues examined. Expression is highest in prostate and testis.		
<b>Function</b>	Alternative products:At least six differentially spliced products may exist,Disease:Defects in DLEC1 may be a cause of breast cancer.,Disease:Defects in DLEC1 may be a cause of esophageal cancer [MIM:133239].,Disease:Defects in DLEC1 may be a cause of primary lung cancer [MIM:211980]. In 33% of lung, esophageal and renal cancer cell lines and primary cancers, there is a lack of functional transcripts and an increase in alternatively spliced non-functional transcripts; the gene itself is not altered.,Disease:Defects in DLEC1 may be a cause of renal cancer.,Function:May act as a tumor suppressor by inhibiting cell proliferation.,sequence Caution:Intron retention.,tissue specificity:Expressed in all tissues examined. Expression is highest in prostate and testis.,		

## Validation Data



Immunofluorescence analysis of HeLa cells, using DLEC1 Antibody. The picture on the right is blocked with the synthesized peptide.



Immunohistochemistry analysis of paraffin-embedded human prostate carcinoma tissue, using DLEC1 Antibody. The picture on the right is blocked with the synthesized peptide.

## Contact information

Orders: [order.cn@immunoway.com](mailto:order.cn@immunoway.com)  
 Support: [support.cn@immunoway.com](mailto:support.cn@immunoway.com)  
 Telephone: 400-8787-807(China)  
 Website: <http://www.immunoway.com.cn>  
 Address: 2200 Ringwood Ave San Jose, CA 95131 USA



Please scan the QR code to access additional product information:  
**DLEC1 Rabbit pAb**

