

## DHHC-7 Rabbit pAb

CatalogNo: YT1343

### Key Features

#### Host Species

- Rabbit

#### Reactivity

- Human,Rat,Mouse,

#### Applications

- WB,ELISA

#### MW

- 35kD (Observed)

#### Isotype

- IgG

### Recommended Dilution Ratios

**WB 1:500-1:2000**

**ELISA 1:40000**

**Not yet tested in other applications.**

### Storage

**Storage\*** -15°C to -25°C/1 year(Do not lower than -25°C)

**Formulation** Liquid in PBS containing 50% glycerol, 0.5% BSA and 0.02% sodium azide.

### Basic Information

**Clonality** Polyclonal

### Immunogen Information

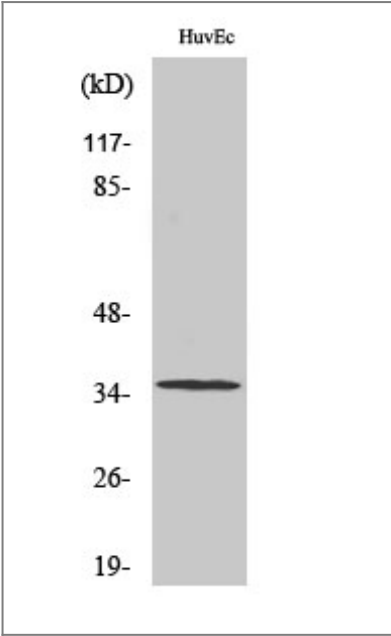
**Immunogen** The antiserum was produced against synthesized peptide derived from human ZDHHC7. AA range:259-308

**Specificity** DHHC-7 Polyclonal Antibody detects endogenous levels of DHHC-7 protein.

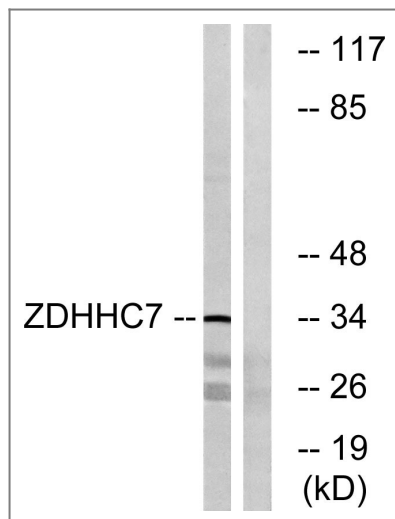
### Target Information

Gene name	ZDHHC7		
Protein Name	Palmitoyltransferase ZDHHC7		
	Organism	Gene ID	UniProt ID
	Human	<a href="#">55625</a> ;	<a href="#">Q9NXF8</a> ;
	Mouse		<a href="#">Q91WU6</a> ;
Cellular Localization	Golgi apparatus membrane ; Multi-pass membrane protein .		
Tissue specificity	Duodenal mucosa,Hepatoma,Skin,Teratocarcinoma,		
Function	Catalytic activity:Palmitoyl-CoA + protein-cysteine = S-palmitoyl protein + CoA.,Domain:The DHHC domain is required for palmitoyltransferase activity.,Function:Palmitoyltransferase with broad specificity. Palmitoylates SNAP25 and DLG4/PSD95. May palmitoylate GABA receptors on their gamma subunit (GABRG1, GABRG2 and GABRG3) and regulate their synaptic clustering and/or cell surface stability.,similarity:Belongs to the DHHC palmitoyltransferase family.,similarity:Contains 1 DHHC-type zinc finger.,		

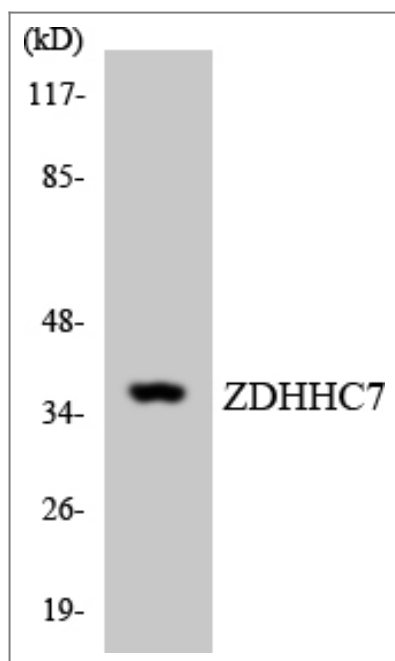
Validation Data



Western Blot analysis of various cells using DHHC-7 Polyclonal Antibody



Western blot analysis of lysates from HUVEC cells, using ZDHHC7 Antibody. The lane on the right is blocked with the synthesized peptide.



Western blot analysis of the lysates from HUVEC cells using ZDHHC7 antibody.

## Contact information

Orders: order.cn@immunoway.com  
 Support: support.cn@immunoway.com  
 Telephone: 400-8787-807(China)  
 Website: <http://www.immunoway.com.cn>  
 Address: 2200 Ringwood Ave San Jose, CA 95131 USA



Please scan the QR code to access additional product information:  
**DHC-7 Rabbit pAb**