

## DGK- $\alpha$ Rabbit pAb

CatalogNo: YT1331

### Key Features

**Host Species**

- Rabbit

**Reactivity**

- Human,Rat,Mouse,

**Applications**

- WB,IHC,IF,ELISA

**MW**

- 80kD (Observed)

**Isotype**

- IgG

### Recommended Dilution Ratios

**WB 1:500-1:2000****IHC 1:100-1:300****ELISA 1:20000****IF 1:50-200**

### Storage

**Storage\***

-15°C to -25°C/1 year(Do not lower than -25°C)

**Formulation**

Liquid in PBS containing 50% glycerol, 0.5% BSA and 0.02% sodium azide.

### Basic Information

**Clonality**

Polyclonal

### Immunogen Information

**Immunogen**

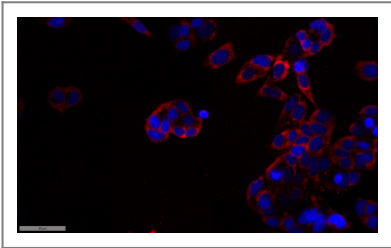
The antiserum was produced against synthesized peptide derived from human DGKA. AA range:304-353

**Specificity**DGK- $\alpha$  Polyclonal Antibody detects endogenous levels of DGK- $\alpha$  protein.

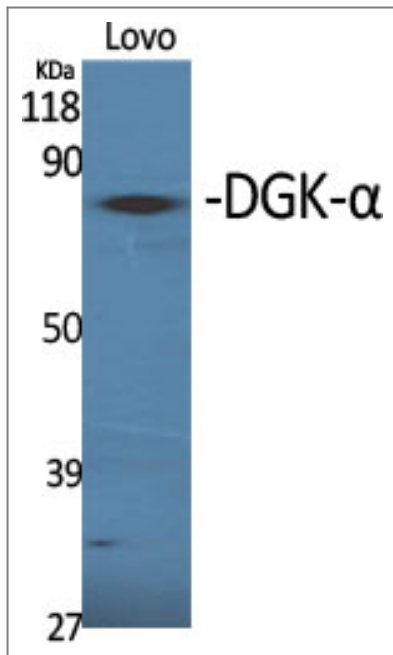
### Target Information

Gene name	DGKA		
Protein Name	Diacylglycerol kinase alpha		
	Organism	Gene ID	UniProt ID
	Human	<a href="#">1606</a> ;	<a href="#">P23743</a> ;
	Mouse		<a href="#">O88673</a> ;
Cellular Localization	Cytoplasm, cytosol .		
Tissue specificity	Expressed in lymphocytes.		
Function	Catalytic activity:ATP + 1,2-diacylglycerol = ADP + 1,2-diacyl-sn-glycerol 3-phosphate.,enzyme regulation:Stimulated by calcium and phosphatidylserine. Phosphorylated by protein kinase C.,Function:Upon cell stimulation converts the second messenger diacylglycerol into phosphatidate, initiating the resynthesis of phosphatidylinositols and attenuating protein kinase C activity.,similarity:Belongs to the eukaryotic diacylglycerol kinase family.,similarity:Contains 1 DAGKc domain.,similarity:Contains 2 EF-hand domains.,similarity:Contains 2 phorbol-ester/DAG-type zinc fingers.,subunit:Monomer.,tissue specificity:Lymphocytes and oligodendroglial cells.,		

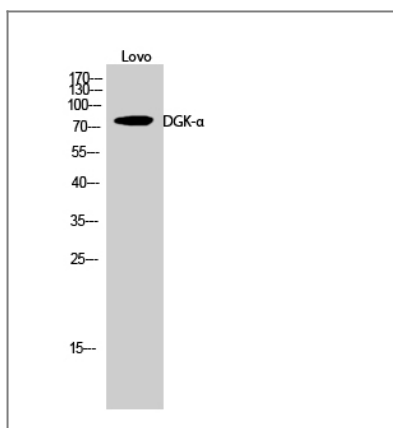
Validation Data



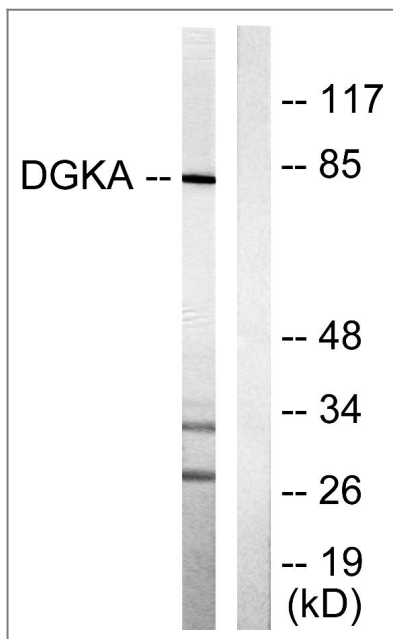
Immunofluorescence analysis of MCF7 cell. 1,primary Antibody was diluted at 1:100(4°C overnight). 2, Goat Anti Rabbit IgG (H&L) - AFluor 594 Secondary antibody(catalog No: RS3611) was diluted at 1:500(room temperature, 50min).



Western Blot analysis of various cells using DGK- $\alpha$  Polyclonal Antibody



Western Blot analysis of Lovo cells using DGK- $\alpha$  Polyclonal Antibody



Western blot analysis of lysates from Jurkat cells, using DGKA Antibody. The lane on the right is blocked with the synthesized peptide.

Orders: order.cn@immunoway.com  
Support: support.cn@immunoway.com  
Telephone: 400-8787-807(China)  
Website: <http://www.immunoway.com.cn>  
Address: 2200 Ringwood Ave San Jose, CA 95131 USA



Please scan the QR code  
to access additional  
product information:  
**DGK- $\alpha$  Rabbit pAb**

---

For Research Use Only. Not for Use in Diagnostic Procedures.

[Antibody](#) | [ELISA Kits](#) | [Protein](#) | [Reagents](#)