

Dexas2 Rabbit pAb

CatalogNo: YT1328

Key Features

Host Species

- Rabbit

Reactivity

- Human, Mouse, Rat

Applications

- WB, ELISA

MW

- 35kD (Observed)

Isotype

- IgG

Recommended Dilution Ratios

WB 1:500-1:2000**ELISA 1:40000****Not yet tested in other applications.**

Storage

Storage*

-15°C to -25°C/1 year (Do not lower than -25°C)

Formulation

Liquid in PBS containing 50% glycerol, 0.5% BSA and 0.02% sodium azide.

Basic Information

Clonality

Polyclonal

Immunogen Information

Immunogen

The antiserum was produced against synthesized peptide derived from human RASD2. AA range: 217-266

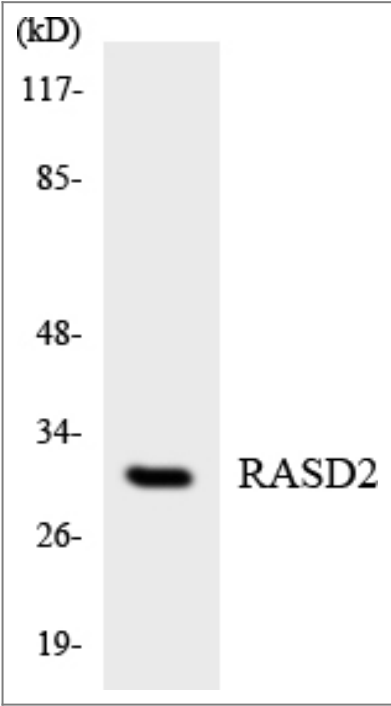
Specificity

Dexas2 Polyclonal Antibody detects endogenous levels of Dexas2 protein.

Target Information

Gene name	RASD2		
Protein Name	GTP-binding protein Rhes		
	Organism	Gene ID	UniProt ID
	Human	23551 ;	Q96D21 ;
	Mouse	75141 ;	P63032 ;
	Rat	171099 ;	P63033 ;
Cellular Localization	Cell membrane ; Lipid-anchor .		
Tissue specificity	Pancreatic endocrine cells (islets of Langerhans).		
Function	Function: Binds to GTP and possesses intrinsic GTPase activity. May play a role in mediating signal transduction (By similarity). May be involved in mediating the insulin secretory response to efaroxan., similarity: Belongs to the small GTPase superfamily. RasD family., subunit: Monomer ., tissue specificity: Pancreatic endocrine cells (islets of Langerhans).,		

Validation Data



Western blot analysis of the lysates from HepG2 cells using RASD2 antibody.

Contact information

Orders: order.cn@immunoway.com
Support: support.cn@immunoway.com
Telephone: 400-8787-807(China)
Website: <http://www.immunoway.com.cn>
Address: 2200 Ringwood Ave San Jose, CA 95131 USA



Please scan the QR code
to access additional
product information:
Dexas2 Rabbit pAb

For Research Use Only. Not for Use in Diagnostic Procedures.

[Antibody](#) | [ELISA Kits](#) | [Protein](#) | [Reagents](#)