

## Defensin $\alpha$ 3 Rabbit pAb

CatalogNo: YT1323

### | Key Features

#### Host Species

- Rabbit

#### Reactivity

- Human, Mouse

#### Applications

- IHC, IF, ELISA

#### MW

- 10kD (Calculated)

#### Isotype

- IgG

### | Recommended Dilution Ratios

IHC 1:100-1:300

ELISA 1:20000

IF 1:50-200

### | Storage

**Storage\*** -15°C to -25°C/1 year (Do not lower than -25°C)

**Formulation** Liquid in PBS containing 50% glycerol, 0.5% BSA and 0.02% sodium azide.

### | Basic Information

**Clonality** Polyclonal

### | Immunogen Information

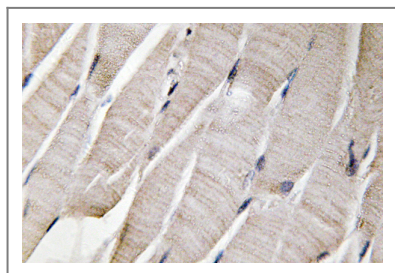
**Immunogen** The antiserum was produced against synthesized peptide derived from human Defensin  $\alpha$ 3. AA range: 3-52

**Specificity** Defensin  $\alpha$ 3 Polyclonal Antibody detects endogenous levels of Defensin  $\alpha$ 3 protein.

### | Target Information

<b>Gene name</b>	DEFA3		
<b>Protein Name</b>	Neutrophil defensin 3		
	<b>Organism</b>	<b>Gene ID</b>	<b>UniProt ID</b>
	Human	<a href="#">1668;</a>	<a href="#">P59666;</a>
<b>Cellular Localization</b>	Secreted.		
<b>Tissue specificity</b>	Pancreas,PCR rescued clones,Spleen,		
<b>Function</b>	Function:Defensin 2 and defensin 3 have antibiotic, fungicide and antiviral activities. Has antimicrobial activity against Gram-negative and Gram-positive bacteria. Defensins are thought to kill microbes by permeabilizing their plasma membrane.,similarity:Belongs to the alpha-defensin family.,subunit:Dimer.,		

## Validation Data



Immunohistochemistry analysis of Defensin  $\alpha$ 3 antibody in paraffin-embedded human skeletal muscle tissue.

## Contact information

Orders: [order.cn@immunoway.com](mailto:order.cn@immunoway.com)  
 Support: [support.cn@immunoway.com](mailto:support.cn@immunoway.com)  
 Telephone: 400-8787-807(China)  
 Website: <http://www.immunoway.com.cn>  
 Address: 2200 Ringwood Ave San Jose, CA 95131 USA



Please scan the QR code  
 to access additional  
 product information:  
**Defensin  $\alpha$ 3 Rabbit  
 pAb**

For Research Use Only. Not for Use in Diagnostic Procedures.

[Antibody](#) | [ELISA Kits](#) | [Protein](#) | [Reagents](#)