

DDX3 Rabbit pAb

CatalogNo: YT1311

Key Features

Host Species

- Rabbit

Reactivity

- Human, Mouse, Rat

Applications

- WB, IHC, IF, ELISA

MW

- 73kD (Observed)

Isotype

- IgG

Recommended Dilution Ratios

WB 1:500-1:2000

IHC 1:100-1:300

ELISA 1:10000

IF 1:50-200

Storage

Storage*

-15°C to -25°C/1 year (Do not lower than -25°C)

Formulation

Liquid in PBS containing 50% glycerol, 0.5% BSA and 0.02% sodium azide.

Basic Information

Clonality

Polyclonal

Immunogen Information

Immunogen

The antiserum was produced against synthesized peptide derived from human DDX3/DEAD-box Protein 3. AA range: 466-515

Specificity

DDX3 Polyclonal Antibody detects endogenous levels of DDX3 protein.

Target Information

Gene name DDX3X

Protein Name ATP-dependent RNA helicase DDX3X

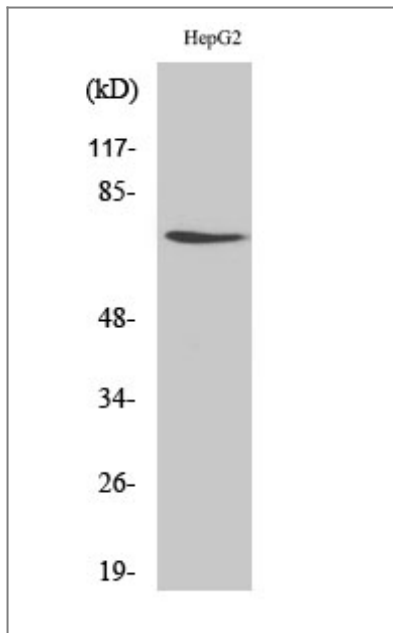
Organism	Gene ID	UniProt ID
Human	1654 ;	O00571 ;
Mouse	13205 ;	Q62167 ;

Cellular Localization Cell membrane . Nucleus . Cytoplasm . Cytoplasm, Stress granule . Inflammasome . Cell projection, lamellipodium . Cytoplasm, cytoskeleton, microtubule organizing center, centrosome . Shuttles between the nucleus and the cytosol (PubMed:15507209, PubMed:18636090, PubMed:29899501, PubMed:31575075, PubMed:30131165). Exported from the nucleus partly through the XPO1/CRM1 system and partly through NXF1/TAP (PubMed:15507209, PubMed:18636090, PubMed:18596238, PubMed:31575075, PubMed:30131165). Localizes to nuclear pores on the outer side of the nuclear membrane (PubMed:15507209). In the cytosol, partly colocalizes with mitochondria (PubMed:20127681). At G0, predominantly located in nucleus. In G1/S phase, predominantly cytoplasmic (PubMed:22034099). During prophase/prometaphase, localizes in close proximity to the condensing chromosomes (PubMed:30131165, PubMed:21730191). During telophase, localizes around the newly synthesized nuclear membrane and in the cytoplasm (PubMed:22034099). Colocalizes with TRPV4 at the plasma membrane. When TRPV4 channel is activated, intracellular Ca(2+) levels increase and the calmodulin/CAMKII pathway is activated, relocates to the nucleus (PubMed:29899501). WNT3A stimulation promotes DDX3 recruitment to the plasma membrane (PubMed:23413191). At the leading edge of migrating fibroblasts, colocalizes with CAPRIN1 and PABPC1 (PubMed:28733330). Localizes to centrosome throughout the cell cycle and associates with TP53 at centrosome during mitosis (PubMed:28842590). Translocates to the nucleus in response to HPIV-3 virus-mediated infection (PubMed:31575075). .

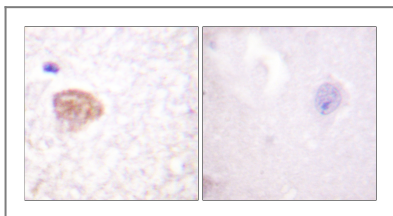
Tissue specificity Widely expressed (PubMed:15294876). In testis, expressed in spermatids (PubMed:15294876). Expressed in epidermis and liver (at protein level) (PubMed:16818630, PubMed:16301996).

Function Function:ATP-dependent RNA helicase. Acts as a cofactor for XPO1-mediated nuclear export of incompletely spliced HIV-1 Rev RNAs. Also involved in HIV-1 replication. Interacts specifically with hepatitis C virus core protein resulting in a change in intracellular location.,similarity:Belongs to the DEAD box helicase family.,similarity:Belongs to the DEAD box helicase family. DDX3/DED1 subfamily.,similarity:Contains 1 helicase ATP-binding domain.,similarity:Contains 1 helicase C-terminal domain.,subcellular location:Located predominantly in nuclear speckles and, at low levels, throughout the cytoplasm. Located to the outer side of nuclear pore complexes (NPC). Shuttles between the nucleus and the cytoplasm in a XPO1-dependent manner.,subunit:Found in a complex with Rev and XPO1. Interacts with XPO1 and TDRD3. Interacts with HCV core protein.,

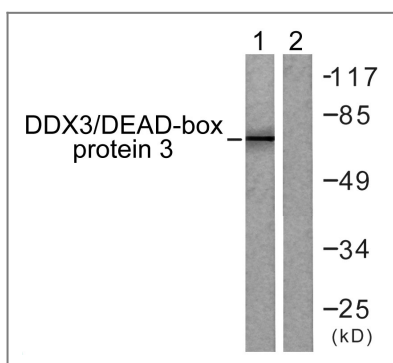
Validation Data



Western Blot analysis of various cells using DDX3 Polyclonal Antibody



Immunohistochemistry analysis of paraffin-embedded human brain tissue, using DDX3/DEAD-box Protein 3 Antibody. The picture on the right is blocked with the synthesized peptide.



Western blot analysis of lysates from HepG2 cells, using DDX3/DEAD-box Protein 3 Antibody. The lane on the right is blocked with the synthesized peptide.

Contact information

Orders: order.cn@immunoway.com
 Support: support.cn@immunoway.com
 Telephone: 400-8787-807(China)
 Website: <http://www.immunoway.com.cn>
 Address: 2200 Ringwood Ave San Jose, CA 95131 USA



Please scan the QR code to access additional product information:
DDX3 Rabbit pAb