

## DCC Rabbit pAb

CatalogNo: YT1300

### Key Features

#### Host Species

- Rabbit

#### Reactivity

- Human, Mouse, Rat

#### Applications

- WB, IF, ELISA

#### MW

- 160kD (Observed)

#### Isotype

- IgG

### Recommended Dilution Ratios

**WB 1:500-1:2000**

**IF 1:200-1:1000**

**ELISA 1:20000**

**Not yet tested in other applications.**

### Storage

#### Storage\*

-15°C to -25°C/1 year (Do not lower than -25°C)

#### Formulation

Liquid in PBS containing 50% glycerol, 0.5% BSA and 0.02% sodium azide.

### Basic Information

#### Clonality

Polyclonal

### Immunogen Information

#### Immunogen

The antiserum was produced against synthesized peptide derived from human DCC. AA range: 441-490

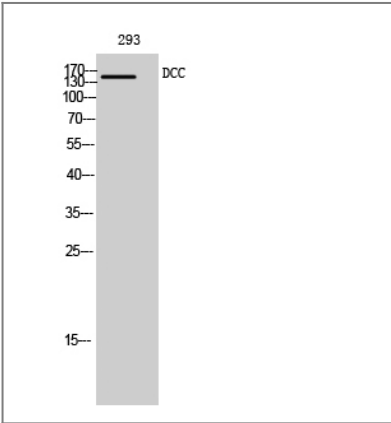
#### Specificity

DCC Polyclonal Antibody detects endogenous levels of DCC protein.

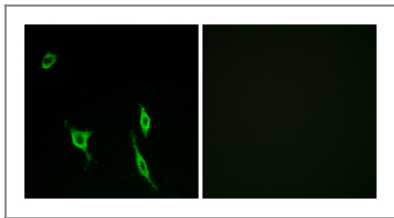
### Target Information

Gene name	DCC		
Protein Name	Netrin receptor DCC		
	Organism	Gene ID	UniProt ID
	Human	<a href="#">1630</a> ;	<a href="#">P43146</a> ;
	Mouse	<a href="#">13176</a> ;	<a href="#">P70211</a> ;
	Rat	<a href="#">25311</a> ;	<a href="#">Q63155</a> ;
Cellular Localization	Membrane; Single-pass type I membrane protein.		
Tissue specificity	Found in axons of the central and peripheral nervous system and in differentiated cell types of the intestine. Not expressed in colorectal tumor cells that lost their capacity to differentiate into mucus producing cells.		
Function	Disease:Colorectal tumors that lost their capacity to differentiate into mucus producing cells uniformly lack DCC expression. Inactivation of DCC due to allelic deletion and/or point mutations may cause both lymphatic and hematogenous metastasis of esophageal squamous cell carcinomas.,Function:Receptor for netrin required for axon guidance. Mediates axon attraction of neuronal growth cones in the developing nervous system upon ligand binding. Its association with UNC5 proteins may trigger signaling for axon repulsion. It also acts as a dependence receptor required for apoptosis induction when not associated with netrin ligand. Implicated as a tumor suppressor gene.,PTM:Ubiquitinated; mediated by SIAH1 or SIAH2 and leading to its subsequent proteasomal degradation.,similarity:Belongs to the immunoglobulin superfamily. DCC family.,similarity:Contains 4 Ig-like C2-type (immunoglobulin-like) domains.,similarity:Contains 6 fibronectin type-III domains.,subunit:Interacts with the cytoplasmic part of UNC5A, UNC5B, UNC5C and probably UNC5D.,tissue specificity:Found in axons of the central and peripheral nervous system and in differentiated cell types of the intestine.,		

| Validation Data



Western Blot analysis of 293 cells using DCC Polyclonal Antibody diluted at 1:500



Immunofluorescence analysis of LOVO cells, using DCC Antibody. The picture on the right is blocked with the synthesized peptide.

## | Contact information

Orders: [order.cn@immunoway.com](mailto:order.cn@immunoway.com)  
Support: [support.cn@immunoway.com](mailto:support.cn@immunoway.com)  
Telephone: 400-8787-807(China)  
Website: <http://www.immunoway.com.cn>  
Address: 2200 Ringwood Ave San Jose, CA 95131 USA



Please scan the QR code  
to access additional  
product information:

**DCC Rabbit pAb**

---

For Research Use Only. Not for Use in Diagnostic Procedures.

[Antibody](#) | [ELISA Kits](#) | [Protein](#) | [Reagents](#)