

Cytochrome c1 Rabbit pAb

CatalogNo: YT1258

Orthogonal Validated 

Key Features

Host Species

- Rabbit

Reactivity

- Human, Mouse

Applications

- WB, IF, ELISA

MW

- 35kD (Observed)

Isotype

- IgG

Storage

Storage*

-15°C to -25°C/1 year (Do not lower than -25°C)

Formulation

Liquid in PBS containing 50% glycerol, 0.5% BSA and 0.02% sodium azide.

Recommended Dilution Ratios

WB 1:500-2000

IF/ICC 1:100-500

ELISA 1:5000-20000

Basic Information

Clonality

Polyclonal

Immunogen Information

Immunogen

The antiserum was produced against synthesized peptide derived from human CYC1. AA range: 132-181

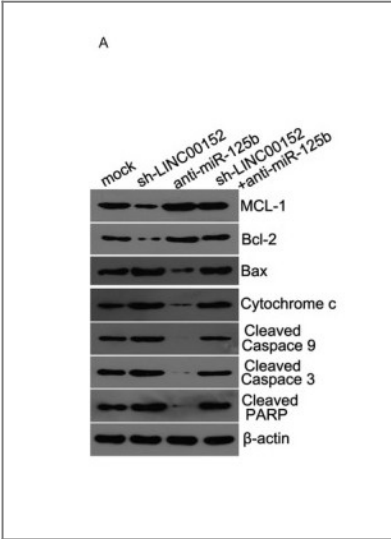
Specificity

Cytochrome c1 Polyclonal Antibody detects endogenous levels of Cytochrome c1 protein.

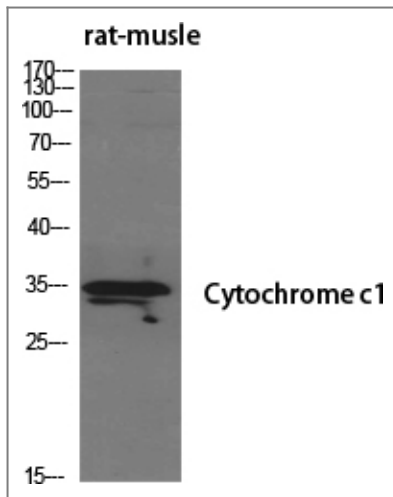
Target Information

Gene name	CYC1		
Protein Name	Cytochrome c1 heme protein mitochondrial		
	Organism	Gene ID	UniProt ID
	Human	1537 ;	P08574 ;
	Mouse	66445 ;	Q9D0M3 ;
Cellular Localization	Mitochondrion inner membrane ; Single-pass membrane protein .		
Tissue specificity	Brain,Kidney,Lung,Skin,		
Function	Function:This is the heme-containing component of the cytochrome b-c1 complex, which accepts electrons from Rieske protein and transfers electrons to cytochrome c in the mitochondrial respiratory chain.,PTM:Binds 1 heme group per subunit.,similarity:Belongs to the cytochrome c family.,subunit:The bc1 complex contains 11 subunits: 3 respiratory subunits (cytochrome b, cytochrome c1 and Rieske/UQCRC1), 2 core proteins (UQCRC1/QCR1 and UQCRC2/QCR2) and 6 low-molecular weight proteins (UQCRH/QCR6, UQCRB/QCR7, UQCRQ/QCR8, UQCR10/QCR9, UQCR11/QCR10 and a cleavage product of Rieske/UQCRC1).,		

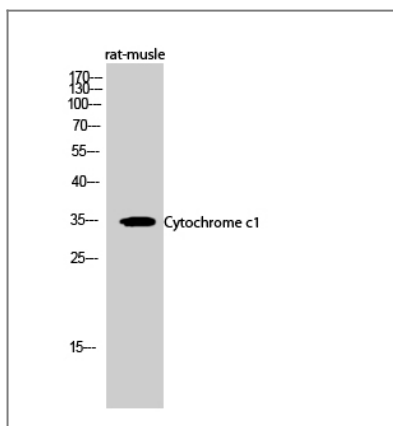
Validation Data



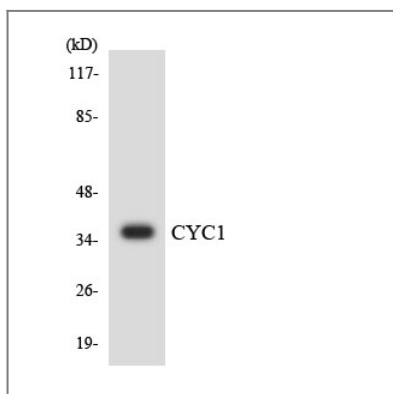
Chen, Puxiang, et al. "Long noncoding RNA LINC00152 promotes cell proliferation through competitively binding endogenous miR-125b with MCL-1 by regulating mitochondrial apoptosis pathways in ovarian cancer." Cancer medicine 7.9 (2018): 4530-4541.



Western Blot analysis of various cells using Cytochrome c1 Polyclonal Antibody diluted at 1:500



Western Blot analysis of rat-muscle cells using Cytochrome c1 Polyclonal Antibody diluted at 1:500



Western blot analysis of the lysates from HUVEC cells using CYC1 antibody.

Contact information

Orders: order.cn@immunoway.com
 Support: support.cn@immunoway.com
 Telephone: 400-8787-807(China)
 Website: <http://www.immunoway.com.cn>
 Address: 2200 Ringwood Ave San Jose, CA 95131 USA



Please scan the QR code to access additional product information:
Cytochrome c1
Rabbit pAb