

CYP4F2 Rabbit pAb

CatalogNo: YT1235

Key Features

Host Species

- Rabbit

Reactivity

- Human

Applications

- WB,IHC,IF,ELISA

MW

- 60kD (Observed)

Isotype

- IgG

Recommended Dilution Ratios

WB 1:500-1:2000

IHC 1:100-1:300

ELISA 1:40000

IF 1:50-200

Storage

Storage*

-15°C to -25°C/1 year(Do not lower than -25°C)

Formulation

Liquid in PBS containing 50% glycerol, 0.5% BSA and 0.02% sodium azide.

Basic Information

Clonality

Polyclonal

Immunogen Information

Immunogen

The antiserum was produced against synthesized peptide derived from human CYP4F2. AA range:41-90

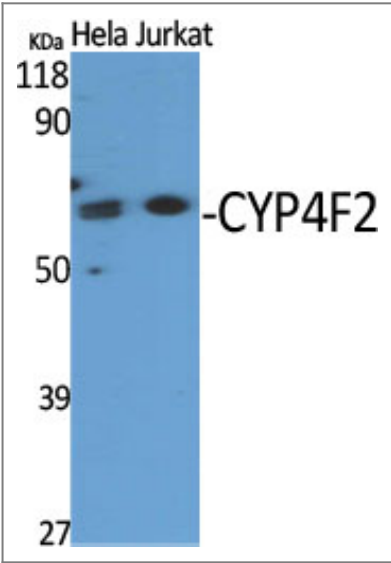
Specificity

CYP4F2 Polyclonal Antibody detects endogenous levels of CYP4F2 protein.

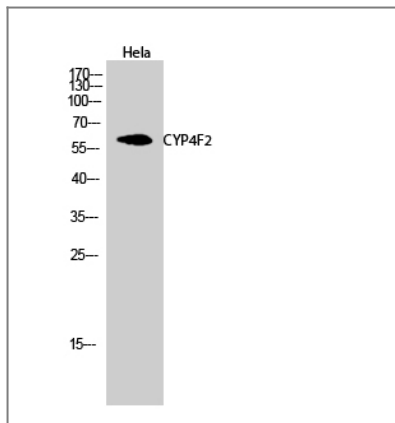
Target Information

Gene name	CYP4F2		
Protein Name	Leukotriene-B(4) omega-hydroxylase 1		
	Organism	Gene ID	UniProt ID
	Human	8529 ;	P78329 ;
Cellular Localization	Microsome membrane ; Peripheral membrane protein . Endoplasmic reticulum membrane ; Peripheral membrane protein .		
Tissue specificity	Liver. Also present in kidney: specifically expressed in the S2 and S3 segments of proximal tubules in cortex and outer medulla (PubMed:10660572).		
Function	Catalytic activity:(6Z,8E,10E,14Z)-(5S,12R)-5,12-dihydroxyicosa-6,8,10,14-tetraenoate + NADPH + O(2) = (6Z,8E,10E,14Z)-(5S,12R)-5,12,20-trihydroxyicosa-6,8,10,14-tetraenoate + NADP(+) + H(2)O.,cofactor:Heme group.,Function:Cytochromes P450 are a group of heme-thiolate monooxygenases. In liver microsomes, this enzyme is involved in an NADPH-dependent electron transport pathway. It oxidizes a variety of structurally unrelated compounds, including steroids, fatty acids, and xenobiotics.,similarity:Belongs to the cytochrome P450 family.,tissue specificity:Liver.,		

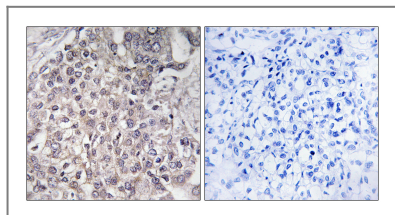
Validation Data



Western Blot analysis of various cells using CYP4F2 Polyclonal Antibody



Western Blot analysis of HeLa cells using CYP4F2 Polyclonal Antibody



Immunohistochemistry analysis of paraffin-embedded human liver carcinoma, using Cytochrome P450 4F2 Antibody. The picture on the right is blocked with the synthesized peptide.

Contact information

Orders: order.cn@immunoway.com
 Support: support.cn@immunoway.com
 Telephone: 400-8787-807(China)
 Website: <http://www.immunoway.com.cn>
 Address: 2200 Ringwood Ave San Jose, CA 95131 USA



Please scan the QR code
 to access additional
 product information:
CYP4F2 Rabbit pAb

For Research Use Only. Not for Use in Diagnostic Procedures.

[Antibody](#) | [ELISA Kits](#) | [Protein](#) | [Reagents](#)