

## CTPS Rabbit pAb

CatalogNo: YT1153

### Key Features

#### Host Species

- Rabbit

#### Reactivity

- Human, Mouse, Rat

#### Applications

- WB, IHC, IF, ELISA

#### MW

- 67kD (Observed)

#### Isotype

- IgG

### Recommended Dilution Ratios

**WB 1:500-1:2000**

**IHC 1:100-1:300**

**ELISA 1:10000**

**IF 1:50-200**

### Storage

**Storage\*** -15°C to -25°C/1 year (Do not lower than -25°C)

**Formulation** Liquid in PBS containing 50% glycerol, 0.5% BSA and 0.02% sodium azide.

### Basic Information

**Clonality** Polyclonal

### Immunogen Information

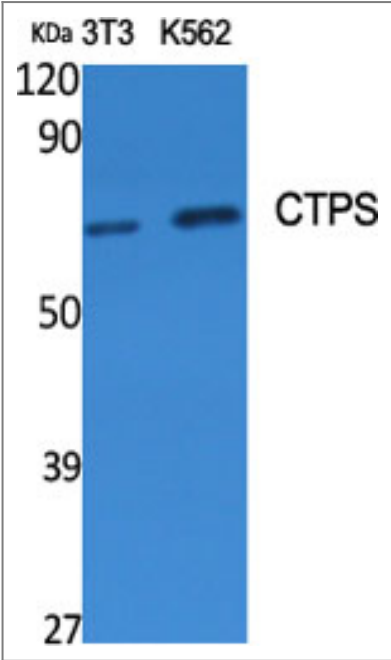
**Immunogen** The antiserum was produced against synthesized peptide derived from human CTPS. AA range: 60-109

**Specificity** CTPS Polyclonal Antibody detects endogenous levels of CTPS protein.

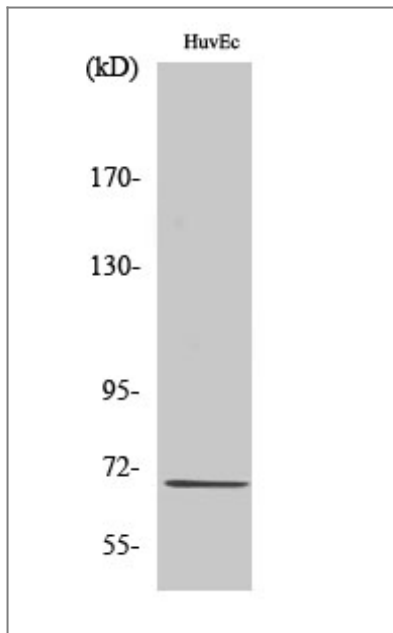
### Target Information

Gene name	CTPS1		
Protein Name	CTP synthase 1		
	Organism	Gene ID	UniProt ID
	Human	<a href="#">1503</a> ;	<a href="#">P17812</a> ;
	Mouse	<a href="#">51797</a> ;	<a href="#">P70698</a> ;
Cellular Localization	Cytoplasm, cytosol . Mainly cytosolic but when active detected in long filamentous structures (PubMed:25223282). Co-localizes with TNK2 in the cytosolic filaments (By similarity). .		
Tissue specificity	Widely expressed.		
Function	Catalytic activity:ATP + UTP + NH(3) = ADP + phosphate + CTP.,enzyme regulation:Activated by GTP and inhibited by CTP.,Function:Catalyzes the ATP-dependent amination of UTP to CTP with either L-glutamine or ammonia as the source of nitrogen.,pathway:Pyrimidine metabolism; CTP biosynthesis via de novo pathway; CTP from UDP: step 2/2.,similarity:Belongs to the CTP synthase family.,similarity:Contains 1 glutamine amidotransferase type-1 domain.,		

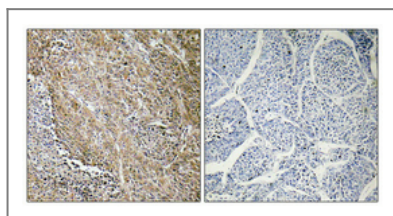
Validation Data



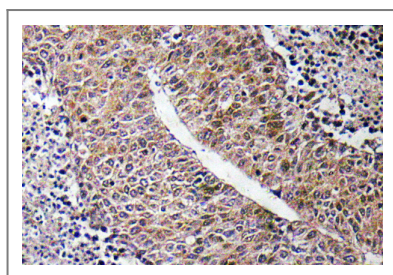
Western Blot analysis of various cells using CTPS Polyclonal Antibody diluted at 1:500



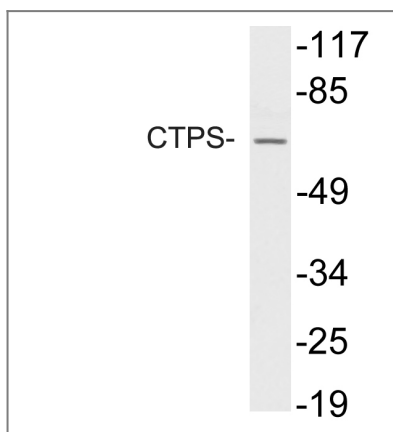
Western Blot analysis of HuvEc cells using CTPS Polyclonal Antibody diluted at 1:500



Immunohistochemical analysis of paraffin-embedded Human lung cancer. Antibody was diluted at 1:100(4° overnight). High-pressure and temperature Tris-EDTA,pH8.0 was used for antigen retrieval. Negative control (right) obtained from antibody was pre-absorbed by immunogen peptide.



Immunohistochemistry analysis of CTPS antibody in paraffin-embedded human liver carcinoma tissue.



Western blot analysis of lysate from HUVEC cells, using CTPS antibody.

## Contact information

Orders: order.cn@immunoway.com  
Support: support.cn@immunoway.com  
Telephone: 400-8787-807(China)  
Website: <http://www.immunoway.com.cn>  
Address: 2200 Ringwood Ave San Jose, CA 95131 USA



Please scan the QR code  
to access additional  
product information:  
**CTPS Rabbit pAb**

---

For Research Use Only. Not for Use in Diagnostic Procedures.

[Antibody](#) | [ELISA Kits](#) | [Protein](#) | [Reagents](#)