

Copine 8 Rabbit pAb

CatalogNo: YT1060

Key Features

Host Species

- Rabbit

Reactivity

- Human, Mouse, Rat

Applications

- WB, IHC, IF, ELISA

MW

- 65kD (Observed)

Isotype

- IgG

Recommended Dilution Ratios

WB 1:500-1:2000

IHC 1:100-1:300

ELISA 1:40000

IF 1:50-200

Storage

Storage*

-15°C to -25°C/1 year (Do not lower than -25°C)

Formulation

Liquid in PBS containing 50% glycerol, 0.5% BSA and 0.02% sodium azide.

Basic Information

Clonality

Polyclonal

Immunogen Information

Immunogen

The antiserum was produced against synthesized peptide derived from human CPNE8. AA range: 11-60

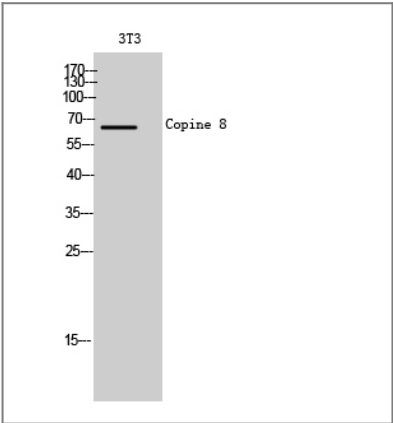
Specificity

Copine 8 Polyclonal Antibody detects endogenous levels of Copine 8 protein.

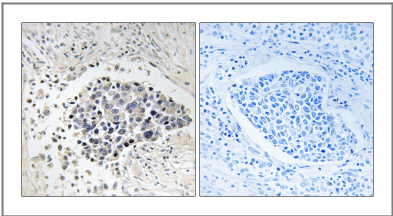
Target Information

Gene name	CPNE8		
Protein Name	Copine-8		
	Organism	Gene ID	UniProt ID
	Human	144402 ;	Q86YQ8 ;
	Mouse	66871 ;	Q9DC53 ;
Cellular Localization	extracellular exosome,		
Tissue specificity	Brain,Hippocampus,		
Function	Function:May function in membrane trafficking. Exhibits calcium-dependent phospholipid binding properties.,PTM:Phosphorylated upon DNA damage, probably by ATM or ATR.,similarity:Belongs to the copine family.,similarity:Contains 1 VWFA domain.,similarity:Contains 2 C2 domains.,		

| Validation Data



Western Blot analysis of 3T3 cells using Copine 8 Polyclonal Antibody



Immunohistochemistry analysis of paraffin-embedded human lung carcinoma tissue, using CPNE8 Antibody. The picture on the right is blocked with the synthesized peptide.

| Contact information

Orders: order.cn@immunoway.com
Support: support.cn@immunoway.com
Telephone: 400-8787-807(China)
Website: <http://www.immunoway.com.cn>
Address: 2200 Ringwood Ave San Jose, CA 95131 USA



Please scan the QR code
to access additional
product information:
Copine 8 Rabbit pAb

For Research Use Only. Not for Use in Diagnostic Procedures.

[Antibody](#) | [ELISA Kits](#) | [Protein](#) | [Reagents](#)