

CKS1 Rabbit pAb

CatalogNo: YT0939 **Orthogonal Validated** 

Key Features

Host Species

- Rabbit

Reactivity

- Human, Mouse

Applications

- WB, IF, ELISA

MW

- 9kD (Observed)

Isotype

- IgG

Storage

Storage* -15°C to -25°C/1 year (Do not lower than -25°C)**Formulation** Liquid in PBS containing 50% glycerol, 0.5% BSA and 0.02% sodium azide.

Recommended Dilution Ratios

WB 1:500-1:2000**IF 1:200-1:1000****ELISA 1:20000****Not yet tested in other applications.**

Basic Information

Clonality Polyclonal

Immunogen Information

Immunogen The antiserum was produced against synthesized peptide derived from human CKS1. AA range:10-59**Specificity** Cks1 Polyclonal Antibody detects endogenous levels of Cks1 protein.

Target Information

Gene name CKS1B CKS1

Protein Name Cyclin-dependent kinases regulatory subunit 1

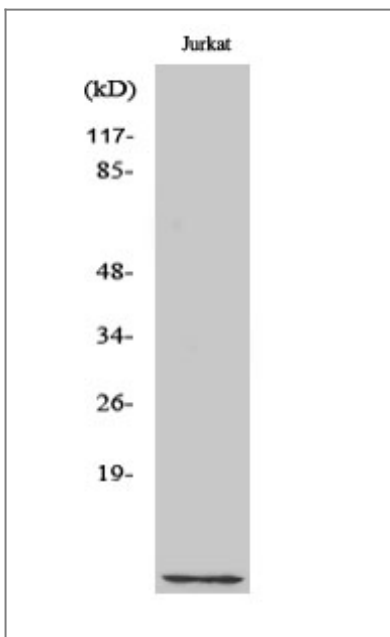
Organism	Gene ID	UniProt ID
Human	1163 ;	P61024 ;
Mouse	54124 ;	P61025 ;

Cellular Localization cyclin-dependent protein kinase holoenzyme complex,nucleoplasm,SCF ubiquitin ligase complex,

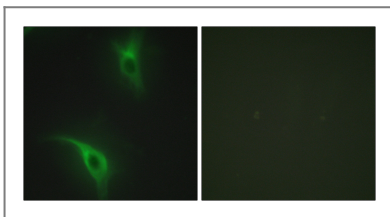
Tissue specificity Brain,Muscle,Promyelocytic leukemia,Prostate,Tongue,

Function Function:Binds to the catalytic subunit of the cyclin dependent kinases and is essential for their biological function.,similarity:Belongs to the CKS family.,subunit:Forms a homohexamer that can probably bind six kinase subunits.,

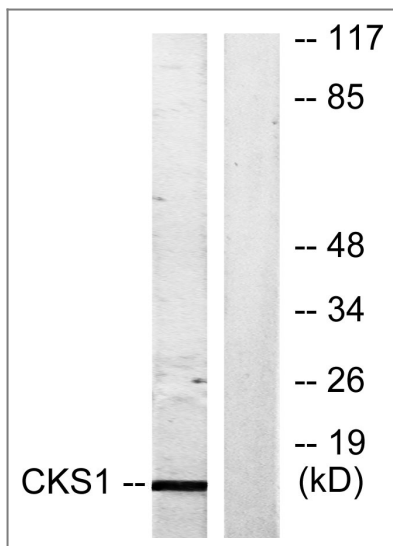
Validation Data



Western Blot analysis of various cells using Cks1 Polyclonal Antibody cells nucleus extracted by Minute TM Cytoplasmic and Nuclear Fractionation kit (SC-003, Invent biotech, MN, USA).



Immunofluorescence analysis of HeLa cells, using CKS1 Antibody. The picture on the right is blocked with the synthesized peptide.



Western blot analysis of lysates from Jurkat cells, treated with serum 20% 15', using CKS1 Antibody. The lane on the right is blocked with the synthesized peptide.

Contact information

Orders: order.cn@immunoway.com
Support: support.cn@immunoway.com
Telephone: 400-8787-807(China)
Website: <http://www.immunoway.com.cn>
Address: 2200 Ringwood Ave San Jose, CA 95131 USA



Please scan the QR code to access additional product information:
CKS1 Rabbit pAb

For Research Use Only. Not for Use in Diagnostic Procedures.

[Antibody](#) | [ELISA Kits](#) | [Protein](#) | [Reagents](#)