

## Citron Rabbit pAb

CatalogNo: YT0931 **Orthogonal Validated** 

### Key Features

**Host Species**

- Rabbit

**Reactivity**

- Human, Mouse

**Applications**

- IHC, IF, ELISA

**MW**

- 231kD (Calculated)

**Isotype**

- IgG

### Storage

**Storage\*** -15°C to -25°C/1 year (Do not lower than -25°C)**Formulation** Liquid in PBS containing 50% glycerol, 0.5% BSA and 0.02% sodium azide.

### Recommended Dilution Ratios

**IHC 1:100-1:300****ELISA 1:40000****IF 1:50-200**

### Basic Information

**Clonality** Polyclonal

### Immunogen Information

**Immunogen** The antiserum was produced against synthesized peptide derived from human CTRO. AA range:1011-1060**Specificity** Citron Polyclonal Antibody detects endogenous levels of Citron protein.

### Target Information

**Gene name** CIT  
**Protein Name** Citron Rho-interacting kinase

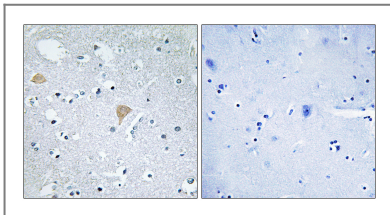
Organism	Gene ID	UniProt ID
Human	<a href="#">11113</a> ;	<a href="#">O14578</a> ;
Mouse		<a href="#">P49025</a> ;

**Cellular Localization** Cytoplasm .

**Tissue specificity** Brain,Epithelium,

**Function** Catalytic activity:ATP + a protein = ADP + a phosphoprotein.,Function:Required for KIF14 localization to the central spindle and midbody. May play a role in cytokinesis. Putative RHO/RAC effector that binds to the GTP-bound forms of RHO and RAC1. It probably binds p21 with a tighter specificity in vivo. Dual specificity protein kinase activity catalyzing autophosphorylation and phosphorylation of exogenous substrates on both serine/threonine and tyrosine residues. Plays an important role in the regulation of cytokinesis and the development of the central nervous system.,similarity:Belongs to the protein kinase superfamily.,similarity:Belongs to the protein kinase superfamily. AGC Ser/Thr protein kinase family.,similarity:Contains 1 AGC-kinase C-terminal domain.,similarity:Contains 1 CNH domain.,similarity:Contains 1 PH domain.,similarity:Contains 1 phorbol-ester/DAG-type zinc finger.,similarity:Contains 1 protein kinase domain.,subunit:Directly interacts with KIF14 depending on the activation state (stronger interaction with the kinase-dead form). Homodimer.,

## Validation Data



Immunohistochemistry analysis of paraffin-embedded human brain tissue, using CTRO Antibody. The picture on the right is blocked with the synthesized peptide.

## Contact information

Orders: [order.cn@immunoway.com](mailto:order.cn@immunoway.com)  
Support: [support.cn@immunoway.com](mailto:support.cn@immunoway.com)  
Telephone: 400-8787-807(China)  
Website: <http://www.immunoway.com.cn>  
Address: 2200 Ringwood Ave San Jose, CA 95131 USA



Please scan the QR code to access additional product information:  
**Citron Rabbit pAb**

