

## CHSY2 Rabbit pAb

CatalogNo: YT0924

### | Key Features

#### Host Species

- Rabbit

#### Reactivity

- Human, Mouse, Rat

#### Applications

- WB, IHC, IF, ELISA

#### MW

- 85kD (Observed)

#### Isotype

- IgG

### | Recommended Dilution Ratios

**WB 1:500-1:2000**

**IHC 1:100-1:300**

**IF 1:200-1:1000**

**ELISA 1:40000**

**Not yet tested in other applications.**

### | Storage

**Storage\*** -15°C to -25°C/1 year (Do not lower than -25°C)

**Formulation** Liquid in PBS containing 50% glycerol, 0.5% BSA and 0.02% sodium azide.

### | Basic Information

**Clonality** Polyclonal

### | Immunogen Information

**Immunogen** The antiserum was produced against synthesized peptide derived from human CHSY2. AA range: 631-680

**Specificity** CHSY2 Polyclonal Antibody detects endogenous levels of CHSY2 protein.

## Target Information

**Gene name** CHPF

**Protein Name** Chondroitin sulfate synthase 2

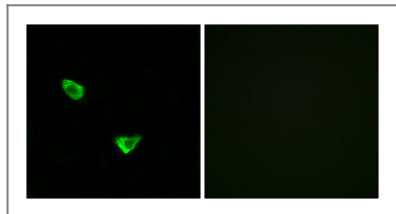
Organism	Gene ID	UniProt ID
Human	<a href="#">79586</a> ;	<a href="#">Q8IZ52</a> ;
Mouse	<a href="#">74241</a> ;	<a href="#">Q6IQX7</a> ;

**Cellular Localization** [Isoform 1]: Golgi apparatus, Golgi stack membrane ; Single-pass type II membrane protein . Cytoplasm, cytosol . ; [Isoform 3]: Cytoplasm, cytosol . Mitochondrion . ; [Isoform 2]: Mitochondrion matrix .

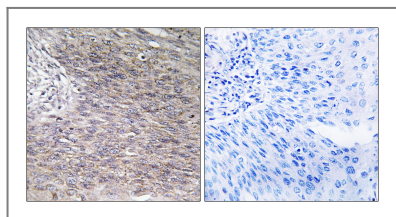
**Tissue specificity** Ubiquitous. Highly expressed in pancreas, ovary, brain, heart, skeletal muscle, colon, kidney, liver, stomach, spleen and placenta. ; [Isoform 2]: Expressed in brain, spleen, ovary, testis, lung and peripheral mononuclear cells. ; [Isoform 3]: Also ubiquitous.

Function	Enzyme
Catalytic activity:UDP-alpha-D-glucuronate + N-acetyl-beta-D-galactosaminyl-(1->4)-beta-D-glucuronosyl-proteoglycan = UDP + beta-D-glucuronosyl-(1->3)-N-acetyl-beta-D-galactosaminyl-(1->4)-beta-D-glucuronosyl-proteoglycan.,Catalytic activity:UDP-N-acetyl-D-galactosamine + beta-D-glucuronosyl-(1->3)-N-acetyl-beta-D-galactosaminyl-proteoglycan = UDP + N-acetyl-beta-D-galactosaminyl-(1->4)-beta-D-glucuronosyl-(1->3)-N-acetyl-beta-D-galactosaminyl-proteoglycan.,cofactor:Divalent cations. Highest activities are measured with manganese. Can also utilize cobalt.,Function:Has both beta-1,3-glucuronic acid and beta-1,4-N-acetylglactosamine transferase activity. Transfers glucuronic acid (GlcUA) from UDP-GlcUA and N-acetylglactosamine (GalNAc) from UDP-GalNAc to the non-reducing end of the elongating chondroitin polymer.,online information:GlycoGene database,PTM:Phosphorylated upon DNA damage, probably by ATM or ATR.,similarity:Belongs to the chondroitin N-acetylglactosaminyltransferase family.,subunit:Binds CHSY1.,tissue specificity:Ubiquitous. Highly expressed in pancreas, ovary, brain, heart, skeletal muscle, colon, kidney, liver, stomach, small intestine and placenta.,	CHSY1

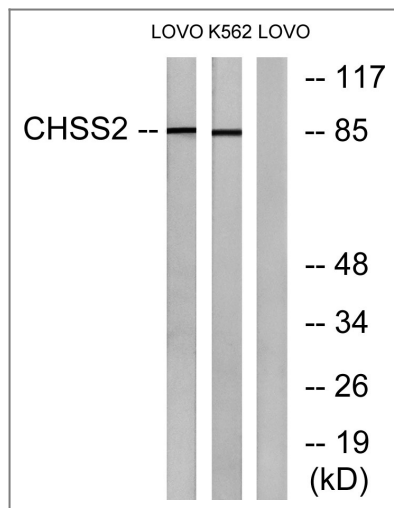
## Validation Data



Immunofluorescence analysis of MCF7 cells, using CHSY2 Antibody. The picture on the right is blocked with the synthesized peptide.



Immunohistochemistry analysis of paraffin-embedded human cervix carcinoma tissue, using CHSY2 Antibody. The picture on the right is blocked with the synthesized peptide.



Western blot analysis of lysates from LOVO and K562 cells, using CHSY2 Antibody. The lane on the right is blocked with the synthesized peptide.

## Contact information

Orders: order.cn@immunoway.com  
 Support: support.cn@immunoway.com  
 Telephone: 400-8787-807(China)  
 Website: <http://www.immunoway.com.cn>  
 Address: 2200 Ringwood Ave San Jose, CA 95131 USA



Please scan the QR code to access additional product information:  
**CHSY2 Rabbit pAb**

For Research Use Only. Not for Use in Diagnostic Procedures.

[Antibody](#) | [ELISA Kits](#) | [Protein](#) | [Reagents](#)