

ChoKB Rabbit pAb

CatalogNo: YT0910

Key Features

Host Species

- Rabbit

Reactivity

- Human, Mouse, Rat

Applications

- WB, IHC, IF, ELISA

MW

- 45kD (Observed)

Isotype

- IgG

Recommended Dilution Ratios

WB 1:500-1:2000

IHC 1:100-1:300

ELISA 1:20000

IF 1:50-200

Storage

Storage*

-15°C to -25°C/1 year (Do not lower than -25°C)

Formulation

Liquid in PBS containing 50% glycerol, 0.5% BSA and 0.02% sodium azide.

Basic Information

Clonality

Polyclonal

Immunogen Information

Immunogen

The antiserum was produced against synthesized peptide derived from human CHKB. AA range: 301-350

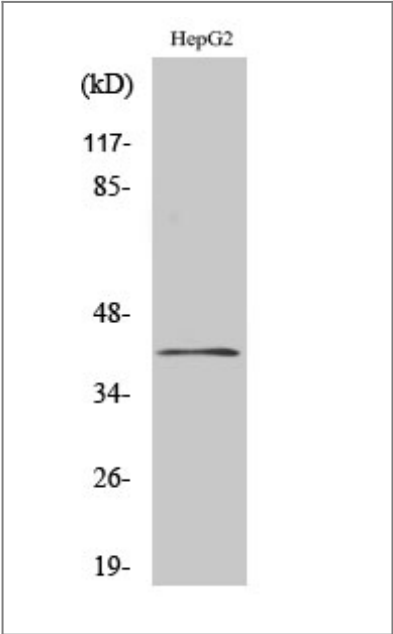
Specificity

ChoKB Polyclonal Antibody detects endogenous levels of ChoKB protein.

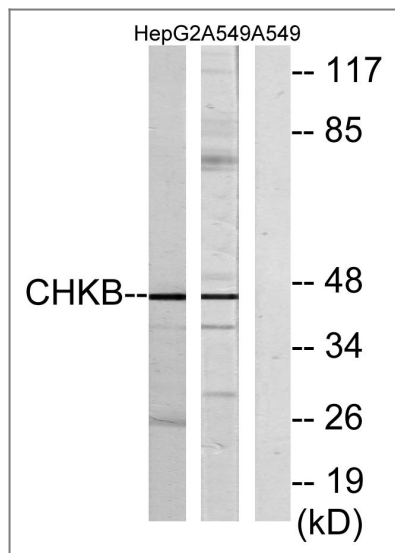
Target Information

Gene name	CHKB		
Protein Name	Choline/ethanolamine kinase		
	Organism	Gene ID	UniProt ID
	Human	1120 ;	Q9Y259 ;
	Mouse		O55229 ;
Cellular Localization	cytosol,		
Tissue specificity	Brain,Clones donated by RIKEN,Epithelium,Heart,Human lung,Lung,Skeletal muscle,T-ce		
Function	Catalytic activity:ATP + choline = ADP + O-phosphocholine.,Catalytic activity:ATP + ethanolamine = ADP + O-phosphoethanolamine.,Catalytic activity:Palmitoyl-CoA + L-carnitine = CoA + L-palmitoylcarnitine.,miscellaneous:This protein is produced by a bicistronic gene which also produces the CHKB protein from a non-overlapping reading frame.,miscellaneous:This protein is produced by a bicistronic gene which also produces the CPT1B protein from a non-overlapping reading frame.,pathway:Lipid metabolism; fatty acid beta-oxidation.,similarity:Belongs to the carnitine/choline acetyltransferase family.,similarity:Belongs to the choline/ethanolamine kinase family.,tissue specificity:Strong expression in heart and skeletal muscle. No expression in liver and kidney.,		

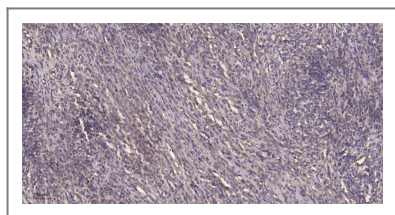
Validation Data



Western Blot analysis of various cells using ChoKB Polyclonal Antibody



Western blot analysis of lysates from HepG2 and A549 cells, using CHKB Antibody. The lane on the right is blocked with the synthesized peptide.



Immunohistochemical analysis of paraffin-embedded human Colon cancer. 1, Antibody was diluted at 1:200(4° overnight). 2, Tris-EDTA,pH9.0 was used for antigen retrieval. 3,Secondary antibody was diluted at 1:200(room temperature, 45min).

Contact information

Orders: order.cn@immunoway.com
 Support: support.cn@immunoway.com
 Telephone: 400-8787-807(China)
 Website: <http://www.immunoway.com.cn>
 Address: 2200 Ringwood Ave San Jose, CA 95131 USA



Please scan the QR code to access additional product information:
ChoKB Rabbit pAb

For Research Use Only. Not for Use in Diagnostic Procedures.

[Antibody](#) | [ELISA Kits](#) | [Protein](#) | [Reagents](#)