

Choactase Rabbit pAb

CatalogNo: YT0909

| Key Features

Host Species

- Rabbit

Reactivity

- Human, Mouse, Rat

Applications

- WB, ELISA

MW

- 82,70kD (Observed)

Isotype

- IgG

| Recommended Dilution Ratios

WB 1:500-1:2000

ELISA 1:10000

Not yet tested in other applications.

| Storage

Storage*

-15°C to -25°C/1 year (Do not lower than -25°C)

Formulation

Liquid in PBS containing 50% glycerol, 0.5% BSA and 0.02% sodium azide.

| Basic Information

Clonality

Polyclonal

| Immunogen Information

Immunogen

The antiserum was produced against synthesized peptide derived from human Choactase. AA range: 334-383

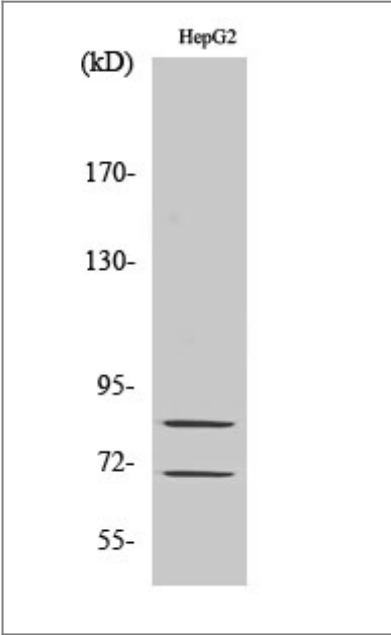
Specificity

Choactase Polyclonal Antibody detects endogenous levels of Choactase protein.

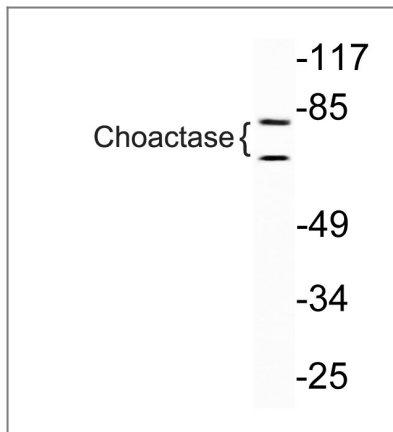
| Target Information

Gene name	CHAT		
Protein Name	Choline O-acetyltransferase		
	Organism	Gene ID	UniProt ID
	Human	1103 ;	P28329 ;
	Mouse		Q03059 ;
	Rat		P32738 ;
Cellular Localization	nucleus,cytoplasm,cytosol,presynapse,		
Tissue specificity	Brain,Lymphocyte,Placenta,Spinal cord,		
Function	Catalytic activity:Acetyl-CoA + choline = CoA + O-acetylcholine.,Disease:Defects in CHAT are the cause of congenital myasthenic syndrome with episodic apnea (CMSEA) [MIM:254210]; formerly known as familial infantile myasthenia gravis 2 (FIMG2). CMSEA is an autosomal recessive congenital myasthenic syndrome. Patients have myasthenic symptoms since birth or early infancy, negative tests for anti-AChR antibodies, and abrupt episodic crises with increased weakness, bulbar paralysis, and apnea precipitated by undue exertion, fever, or excitement.,Function:Catalyzes the reversible synthesis of acetylcholine (ACh) from acetyl CoA and choline at cholinergic synapses.,online information:Choline acetyltransferase entry,similarity:Belongs to the carnitine/choline acetyltransferase family.,		

Validation Data



Western Blot analysis of various cells using Choactase Polyclonal Antibody diluted at 1:1000



Western blot analysis of lysate from HepG2 cells, using Choactase antibody.

Contact information

Orders: order.cn@immunoway.com
Support: support.cn@immunoway.com
Telephone: 400-8787-807(China)
Website: <http://www.immunoway.com.cn>
Address: 2200 Ringwood Ave San Jose, CA 95131 USA



Please scan the QR code
to access additional
product information:
**Choactase Rabbit
pAb**

For Research Use Only. Not for Use in Diagnostic Procedures.

[Antibody](#) | [ELISA Kits](#) | [Protein](#) | [Reagents](#)