

ChemR23 Rabbit pAb

CatalogNo: YT0897

| Key Features

Host Species

- Rabbit

Reactivity

- Human, Mouse, Rat

Applications

- WB, IHC, IF, ELISA

MW

- 42kD (Observed)

Isotype

- IgG

| Recommended Dilution Ratios

WB 1:500-1:2000

IHC: 1:100-300

ELISA 1:20000

IF 1:100-300

Not yet tested in other applications.

| Storage

Storage* -15°C to -25°C/1 year (Do not lower than -25°C)

Formulation Liquid in PBS containing 50% glycerol, 0.5% BSA and 0.02% sodium azide.

| Basic Information

Clonality Polyclonal

| Immunogen Information

Immunogen The antiserum was produced against synthesized peptide derived from human CMKLR1. AA range: 221-270

Specificity ChemR23 Polyclonal Antibody detects endogenous levels of ChemR23 protein.

| Target Information

Gene name CMKLR1

Protein Name Chemokine-like receptor 1

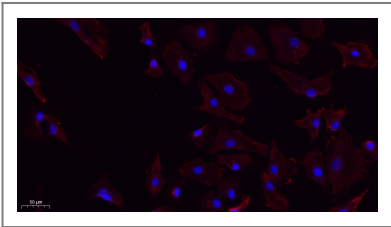
Organism	Gene ID	UniProt ID
Human	1240;	Q99788;
Mouse	14747;	P97468;
Rat		Q35786;

Cellular Localization Cell membrane ; Multi-pass membrane protein . Internalizes efficiently in response to RARRES2. .

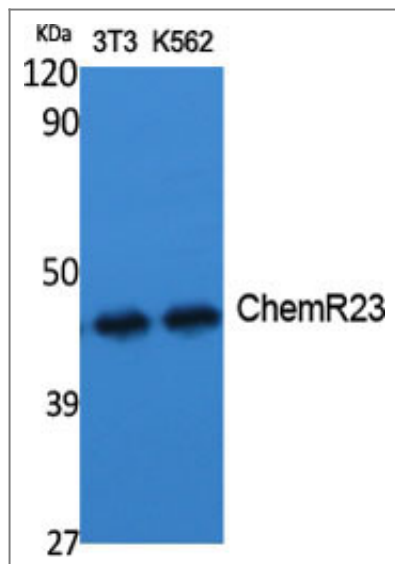
Tissue specificity Prominently expressed in developing osseous and cartilaginous tissue. Also found in adult parathyroid glands. Expressed in cardiovascular system, brain, kidney, gastrointestinal tissues and myeloid tissues. Expressed in a broad array of tissues associated with hematopoietic and immune function including, spleen, thymus, appendix, lymph node, bone marrow and fetal liver. Among leukocyte populations abundant expression in monocyte-derived macrophage and immature dendritic cells (DCs). High expression in blood monocytes and low levels in polymorphonuclear cells and T-cells. Expressed on endothelial cells. Highly expressed in differentiating adipocytes.

Function developmental stage:Expressed during bone development.,Function:Orphan receptor. Could be a chemotactic peptide receptor. May have a function in bone metabolism. Acts as a coreceptor for several SIV strains (SIVMAC316, SIVMAC239, SIVMAC17E-FR and SIVSM62A), as well as a primary HIV-1 strain (92UG024-2).,similarity:Belongs to the G-protein coupled receptor 1 family.,tissue specificity:Prominently expressed in developing osseous and cartilaginous tissue. Also found in adult parathyroid glands.,

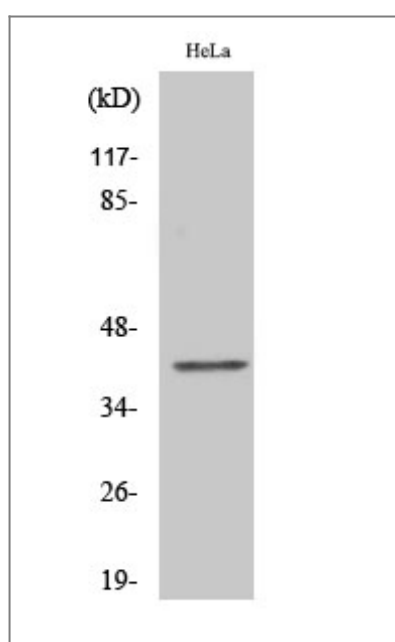
| Validation Data



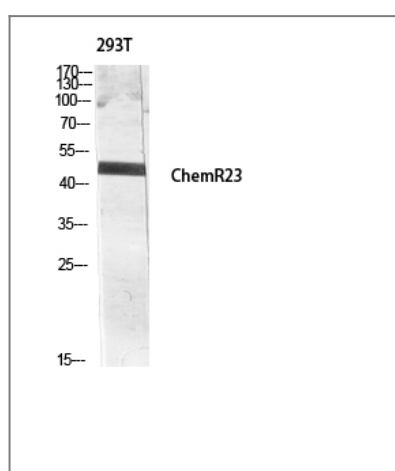
Immunofluorescence analysis of A549. 1,primary Antibody(red) was diluted at 1:200(4°C overnight). 2, Goat Anti Rabbit IgG (H&L) - Alexa Fluor 594 Secondary antibody was diluted at 1:1000(room temperature, 50min).3, DAPI(blue) 10min.



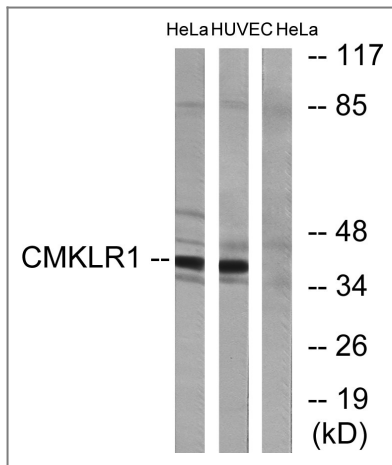
Western Blot analysis of various cells using ChemR23 Polyclonal Antibody diluted at 1:1000



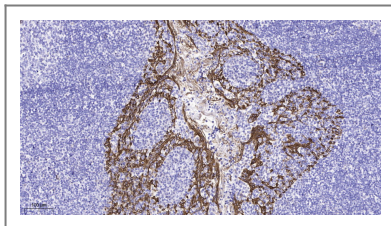
Western Blot analysis of COLO205 cells using ChemR23 Polyclonal Antibody diluted at 1:1000



Western blot analysis of 293T lysis using ChemR23 antibody. Antibody was diluted at 1:1000



Western blot analysis of lysates from HeLa and HUVEC cells, using CMKLR1 Antibody. The lane on the right is blocked with the synthesized peptide.



Immunohistochemical analysis of paraffin-embedded human tonsil. 1, Antibody was diluted at 1:200(4° overnight). 2, Tris-EDTA,pH9.0 was used for antigen retrieval. 3,Secondary antibody was diluted at 1:200(room temperature, 45min).

Contact information

Orders: order.cn@immunoway.com
 Support: support.cn@immunoway.com
 Telephone: 400-8787-807(China)
 Website: <http://www.immunoway.com.cn>
 Address: 2200 Ringwood Ave San Jose, CA 95131 USA



Please scan the QR code to access additional product information:
ChemR23 Rabbit pAb

For Research Use Only. Not for Use in Diagnostic Procedures.

[Antibody](#) | [ELISA Kits](#) | [Protein](#) | [Reagents](#)