

cGKII Rabbit pAb

CatalogNo: YT0891

Orthogonal Validated 

Key Features

Host Species

- Rabbit

Reactivity

- Human, Mouse, Rat

Applications

- WB, IHC, IF, ELISA

MW

- 87kD (Observed)

Isotype

- IgG

Recommended Dilution Ratios

WB 1:500-1:2000

IHC 1:100-1:300

ELISA 1:40000

IF 1:50-200

Storage

Storage* -15°C to -25°C/1 year (Do not lower than -25°C)**Formulation** Liquid in PBS containing 50% glycerol, 0.5% BSA and 0.02% sodium azide.

Basic Information

Clonality Polyclonal

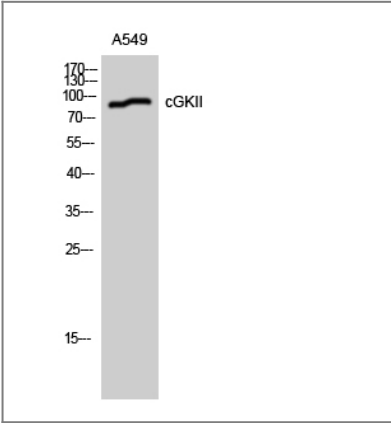
Immunogen Information

Immunogen The antiserum was produced against synthesized peptide derived from human PKG2. AA range: 92-141**Specificity** cGKII Polyclonal Antibody detects endogenous levels of cGKII protein.

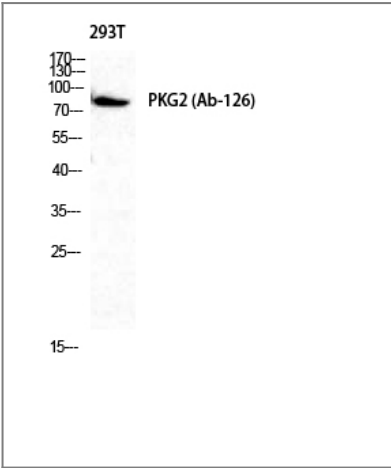
Target Information

Gene name	PRKG2		
Protein Name	cGMP-dependent protein kinase 2		
	Organism	Gene ID	UniProt ID
	Human	5593 ;	Q13237 ;
	Mouse		Q61410 ;
	Rat	25523 ;	Q64595 ;
Cellular Localization	Apical cell membrane ; Lipid-anchor .		
Tissue specificity	Highly concentrated in brain, lung and intestinal mucosa.		
Function	Catalytic activity:ATP + a protein = ADP + a phosphoprotein.,enzyme regulation:Binding of cGMP results in enzyme activation.,similarity:Belongs to the protein kinase superfamily. AGC Ser/Thr protein kinase family. cGMP subfamily.,similarity:Contains 1 AGC-kinase C-terminal domain.,similarity:Contains 1 protein kinase domain.,similarity:Contains 2 cyclic nucleotide-binding domains.,tissue specificity:Highly concentrated in brain, lung and intestinal mucosa.,		

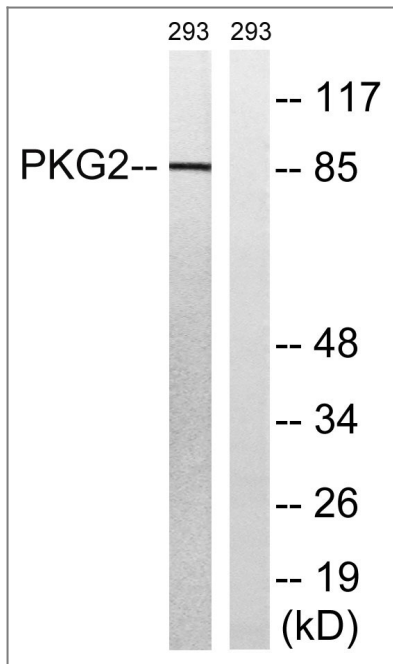
| Validation Data



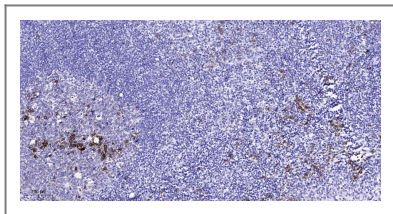
Western Blot analysis of A549 cells using cGKII Polyclonal Antibody diluted at 1:1000



Western Blot analysis of 293T cells using cGKII Polyclonal Antibody diluted at 1:1000



Western blot analysis of lysates from 293 cells, treated with anisomycin 25ug/ml 30', using PKG2 Antibody. The lane on the right is blocked with the synthesized peptide.



Immunohistochemical analysis of paraffin-embedded human tonsil. 1, Antibody was diluted at 1:200(4° overnight). 2, Tris-EDTA,pH9.0 was used for antigen retrieval. 3,Secondary antibody was diluted at 1:200(room temperature, 45min).

Contact information

Orders: order.cn@immunoway.com
 Support: support.cn@immunoway.com
 Telephone: 400-8787-807(China)
 Website: <http://www.immunoway.com.cn>
 Address: 2200 Ringwood Ave San Jose, CA 95131 USA



Please scan the QR code to access additional product information:
cGKII Rabbit pAb

For Research Use Only. Not for Use in Diagnostic Procedures.

[Antibody](#) | [ELISA Kits](#) | [Protein](#) | [Reagents](#)