

## Cerebellin 4 Rabbit pAb

CatalogNo: YT0871

### Key Features

#### Host Species

- Rabbit

#### Reactivity

- Human, Mouse, Monkey

#### Applications

- WB, IHC, IF, ELISA

#### MW

- 27kD (Observed)

#### Isotype

- IgG

### Recommended Dilution Ratios

**WB 1:500-1:2000**

**IHC 1:100-1:300**

**ELISA 1:40000**

**IF 1:50-200**

### Storage

#### Storage\*

-15°C to -25°C/1 year (Do not lower than -25°C)

#### Formulation

Liquid in PBS containing 50% glycerol, 0.5% BSA and 0.02% sodium azide.

### Basic Information

#### Clonality

Polyclonal

### Immunogen Information

#### Immunogen

The antiserum was produced against synthesized peptide derived from human CBLN4. AA range: 141-190

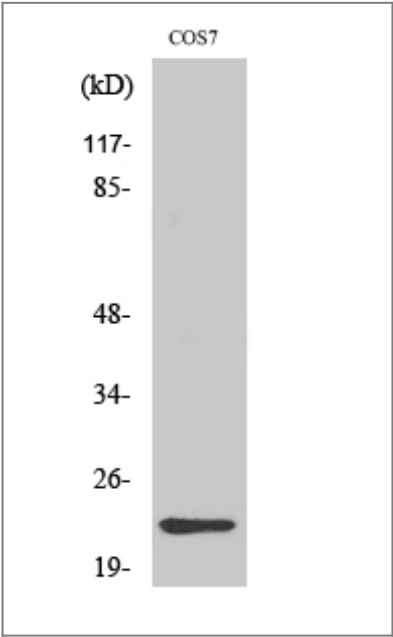
#### Specificity

Cerebellin 4 Polyclonal Antibody detects endogenous levels of Cerebellin 4 protein.

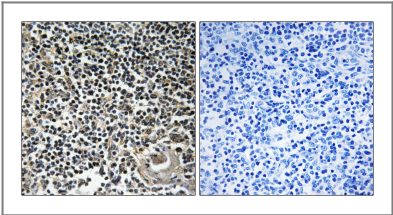
### Target Information

Gene name	CBLN4		
Protein Name	Cerebellin-4		
	Organism	Gene ID	UniProt ID
	Human	<a href="#">140689</a> ;	<a href="#">Q9NTU7</a> ;
	Mouse	<a href="#">228942</a> ;	<a href="#">Q8BME9</a> ;
Cellular Localization	Secreted . Cell junction, synapse . Detected at GABAergic synapses. .		
Tissue specificity	Brain,		
Function	Function:May be involved in synaptic functions in the CNS. Can enable ER export and secretion of CBLN3.,similarity:Contains 1 C1q domain.,subunit:Homohexamer; disulfide-linked homotrimers. The trimers are assembled via the globular C1q domains. The trimers associate via N-terminal cysteine residues to form disulfide-linked hexamers. May interact with CBLN1, CBLN2 and CBLN3.,		

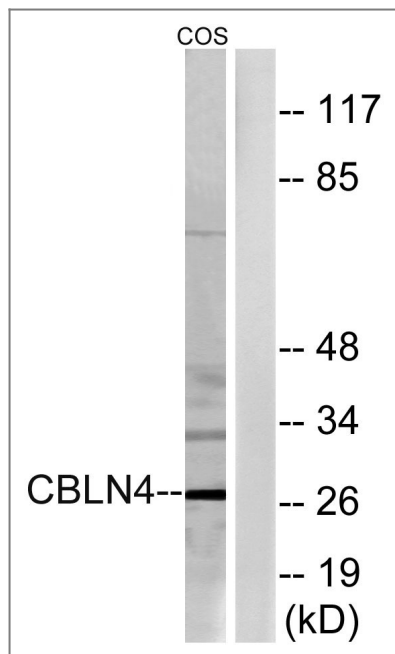
| Validation Data



Western Blot analysis of various cells using Cerebellin 4 Polyclonal Antibody



Immunohistochemistry analysis of paraffin-embedded human thymus gland tissue, using CBLN4 Antibody. The picture on the right is blocked with the synthesized peptide.



Western blot analysis of lysates from COS cells, using CBLN4 Antibody. The lane on the right is blocked with the synthesized peptide.

## Contact information

Orders: [order.cn@immunoway.com](mailto:order.cn@immunoway.com)  
 Support: [support.cn@immunoway.com](mailto:support.cn@immunoway.com)  
 Telephone: 400-8787-807(China)  
 Website: <http://www.immunoway.com.cn>  
 Address: 2200 Ringwood Ave San Jose, CA 95131 USA



Please scan the QR code to access additional product information:  
**Cerebellin 4 Rabbit pAb**

For Research Use Only. Not for Use in Diagnostic Procedures.

[Antibody](#) | [ELISA Kits](#) | [Protein](#) | [Reagents](#)