

CEP57 Rabbit pAb

CatalogNo: YT0863

| Key Features

Host Species

- Rabbit

Reactivity

- Human,Rat,Mouse,

Applications

- WB,ELISA

MW

- 50kD (Observed)

Isotype

- IgG

| Recommended Dilution Ratios

WB 1:500-1:2000

ELISA 1:40000

Not yet tested in other applications.

| Storage

Storage* -15°C to -25°C/1 year(Do not lower than -25°C)

Formulation Liquid in PBS containing 50% glycerol, 0.5% BSA and 0.02% sodium azide.

| Basic Information

Clonality Polyclonal

| Immunogen Information

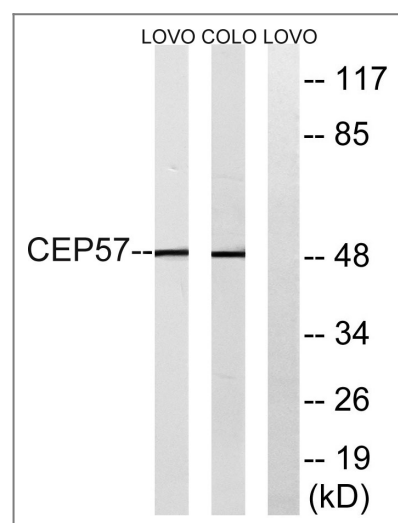
Immunogen The antiserum was produced against synthesized peptide derived from human CEP57. AA range:241-290

Specificity CEP57 Polyclonal Antibody detects endogenous levels of CEP57 protein.

| Target Information

Gene name	CEP57		
Protein Name	Centrosomal protein of 57 kDa		
	Organism	Gene ID	UniProt ID
	Human	9702;	Q86XR8;
	Mouse		Q8CEE0;
Cellular Localization	Nucleus . Cytoplasm. Cytoplasm, cytoskeleton, microtubule organizing center, centrosome .		
Tissue specificity	Ubiquitous.		
Function	Function:Mediates nuclear translocation and mitogenic activity of the internalized growth factor FGF2.,similarity:Belongs to the translokin family.,subcellular location:Associates with microtubules and the centrosome.,subunit:Homodimer. Interacts with FGF2 and RAP80. Does not interact with FGF1 or FGF2 isoform 24 kDa.,tissue specificity:Ubiquitous.,		

Validation Data



Western blot analysis of lysates from COLO and LOVO cells, using CEP57 Antibody. The lane on the right is blocked with the synthesized peptide.

Contact information

Orders: order.cn@immunoway.com
 Support: support.cn@immunoway.com
 Telephone: 400-8787-807(China)
 Website: <http://www.immunoway.com.cn>
 Address: 2200 Ringwood Ave San Jose, CA 95131 USA



Please scan the QR code to access additional product information:
CEP57 Rabbit pAb

