

CDC27 Rabbit pAb

CatalogNo: YT0802

Key Features

Host Species

- Rabbit

Reactivity

- Human, Mouse, Rat

Applications

- WB, IHC, IF, ELISA

MW

- 92kD (Observed)

Isotype

- IgG

Recommended Dilution Ratios

WB 1:500-1:2000

IHC 1:100-1:300

ELISA 1:5000

IF 1:50-200

Storage

Storage*

-15°C to -25°C/1 year (Do not lower than -25°C)

Formulation

Liquid in PBS containing 50% glycerol, 0.5% BSA and 0.02% sodium azide.

Basic Information

Clonality

Polyclonal

Immunogen Information

Immunogen

The antiserum was produced against synthesized peptide derived from human H-NUC. AA range: 361-410

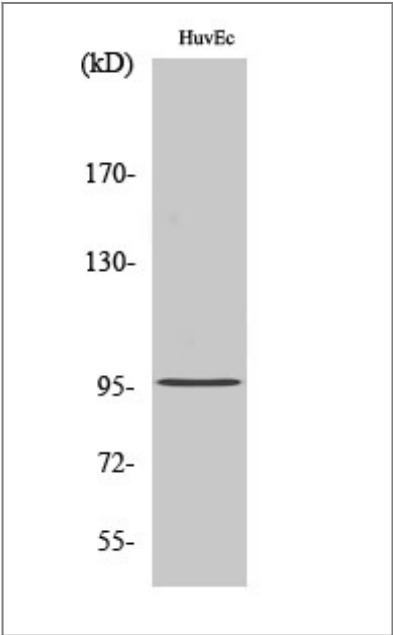
Specificity

Cdc27 Polyclonal Antibody detects endogenous levels of Cdc27 protein.

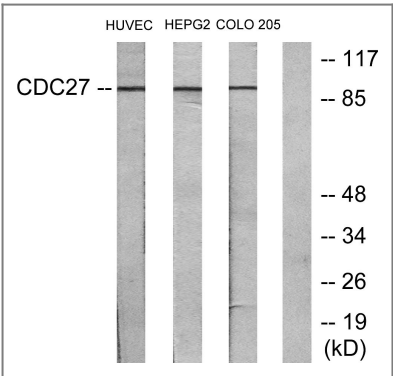
Target Information

Gene name	CDC27		
Protein Name	Cell division cycle protein 27 homolog		
	Organism	Gene ID	UniProt ID
	Human	996;	P30260;
	Mouse	217232;	A2A6Q5;
	Rat	360643;	Q4V8A2;
Cellular Localization	Nucleus . Cytoplasm, cytoskeleton, spindle .		
Tissue specificity	Epithelium,Uterus,		
Function	PTM:Phosphorylated. Phosphorylation on Ser-426 and Thr-446 occurs specifically during mitosis.,similarity:Belongs to the APC3/CDC27 family.,similarity:Contains 9 TPR repeats.,subunit:Interacts with RB.,		

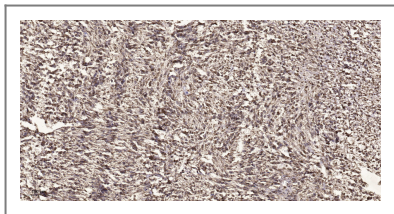
| Validation Data



Western Blot analysis of various cells using Cdc27 Polyclonal Antibody



Western blot analysis of lysates from HUVEC, HepG2, and COLO205 cells, using H-NUC Antibody. The lane on the right is blocked with the synthesized peptide.



Immunohistochemical analysis of paraffin-embedded human small intestinal carcinoma tissue. 1,primary Antibody was diluted at 1:200(4° overnight). 2, Sodium citrate pH 6.0 was used for antigen retrieval(>98°C,20min). 3,Secondary antibody was diluted at 1:200

| Contact information

Orders: order.cn@immunoway.com
Support: support.cn@immunoway.com
Telephone: 400-8787-807(China)
Website: <http://www.immunoway.com.cn>
Address: 2200 Ringwood Ave San Jose, CA 95131 USA



Please scan the QR code
to access additional
product information:
CDC27 Rabbit pAb

For Research Use Only. Not for Use in Diagnostic Procedures.

[Antibody](#) | [ELISA Kits](#) | [Protein](#) | [Reagents](#)