

CD32 Rabbit pAb

CatalogNo: YT0755

Key Features

Host Species

- Rabbit

Reactivity

- Human

Applications

- WB,ELISA

MW

- 35kD (Observed)

Isotype

- IgG

Storage

Storage* -15°C to -25°C/1 year(Do not lower than -25°C)

Formulation Liquid in PBS containing 50% glycerol, 0.5% BSA and 0.02% sodium azide.

Recommended Dilution Ratios

WB 1:500-1:2000

ELISA 1:20000

Not yet tested in other applications.

Basic Information

Clonality Polyclonal

Immunogen Information

Immunogen The antiserum was produced against synthesized peptide derived from human FCGR2A. AA range:241-290

Specificity CD32-A Polyclonal Antibody detects endogenous levels of CD32-A protein.

Target Information

Gene name FCGR2A

Protein Name Low affinity immunoglobulin gamma Fc region receptor II-a

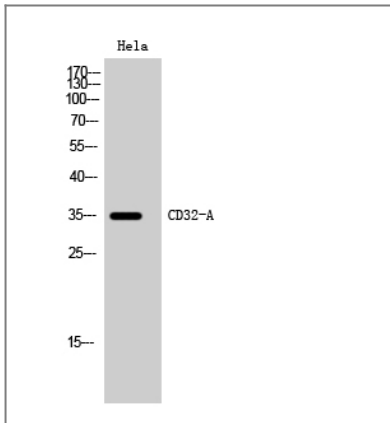
Organism	Gene ID	UniProt ID
Human	2212 ;	P12318 ;

Cellular Localization Cell membrane ; Single-pass type I membrane protein .

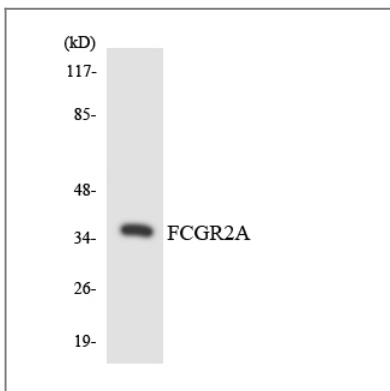
Tissue specificity Found on monocytes, neutrophils and eosinophil platelets.

Function Function: Binds to the Fc region of immunoglobulins gamma. Low affinity receptor. By binding to IgG it initiates cellular responses against pathogens and soluble antigens., similarity: Contains 2 Ig-like C2-type (immunoglobulin-like) domains., subunit: Interacts with INPP5D/SHIP1 and INPPL1/SHIP2, regulating its function., tissue specificity: Found on monocytes, neutrophils and eosinophil platelets.,

Validation Data



Western Blot analysis of HeLa cells using CD32-A Polyclonal Antibody



Western blot analysis of the lysates from 293 cells using FCGR2A antibody.

Contact information

Orders: order.cn@immunoway.com
Support: support.cn@immunoway.com
Telephone: 400-8787-807(China)
Website: <http://www.immunoway.com.cn>
Address: 2200 Ringwood Ave San Jose, CA 95131 USA



Please scan the QR code
to access additional
product information:
CD32 Rabbit pAb

For Research Use Only. Not for Use in Diagnostic Procedures.

[Antibody](#) | [ELISA Kits](#) | [Protein](#) | [Reagents](#)