

CD172b Rabbit pAb

CatalogNo: YT0732

Key Features

Host Species

- Rabbit

Reactivity

- Human

Applications

- WB, ELISA

MW

- 48kD (Observed)

Isotype

- IgG

Recommended Dilution Ratios

WB 1:500-1:2000

ELISA 1:5000

Not yet tested in other applications.

Storage

Storage*

-15°C to -25°C/1 year (Do not lower than -25°C)

Formulation

Liquid in PBS containing 50% glycerol, 0.5% BSA and 0.02% sodium azide.

Basic Information

Clonality

Polyclonal

Immunogen Information

Immunogen

The antiserum was produced against synthesized peptide derived from human SIRPB1. AA range: 231-280

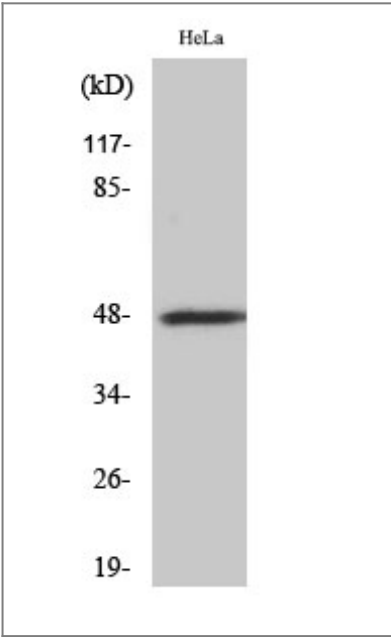
Specificity

CD172b Polyclonal Antibody detects endogenous levels of CD172b protein.

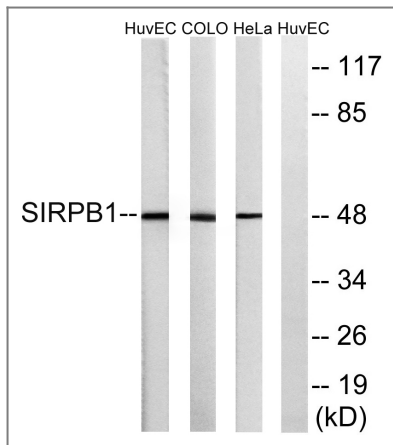
Target Information

Gene name	SIRPB1		
Protein Name	Signal-regulatory protein beta-1		
	Organism	Gene ID	UniProt ID
	Human	10326 ;	O00241 ;
Cellular Localization	Cell membrane ; Single-pass type I membrane protein .		
Tissue specificity	Detected in monocytes and dendritic cells.		
Function	Function:Immunoglobulin-like cell surface receptor involved in the negative regulation of receptor tyrosine kinase-coupled signaling processes.,Function:Immunoglobulin-like cell surface receptor involved in the negative regulation of receptor tyrosine kinase-coupled signaling processes. Participates also in the recruitment of tyrosine kinase SYK.,PTM:N-glycosylated.,similarity:Contains 1 Ig-like V-type (immunoglobulin-like) domain.,similarity:Contains 2 Ig-like C1-type (immunoglobulin-like) domains.,subunit:Interacts with TYROBP. This interaction results in the recruitment of SYK.,tissue specificity:Detected in monocytes and dendritic cells.,		

Validation Data



Western Blot analysis of various cells using CD172b Polyclonal Antibody



Western blot analysis of lysates from HeLa, COLO, and HUVEC cells, using SIRPB1 Antibody. The lane on the right is blocked with the synthesized peptide.

Contact information

Orders: order.cn@immunoway.com
 Support: support.cn@immunoway.com
 Telephone: 400-8787-807(China)
 Website: <http://www.immunoway.com.cn>
 Address: 2200 Ringwood Ave San Jose, CA 95131 USA



Please scan the QR code to access additional product information:
CD172b Rabbit pAb

For Research Use Only. Not for Use in Diagnostic Procedures.

[Antibody](#) | [ELISA Kits](#) | [Protein](#) | [Reagents](#)