

## CB2 Rabbit pAb

CatalogNo: YT0688

### Key Features

**Host Species**

- Rabbit

**Reactivity**

- Human,Rat,Mouse,

**Applications**

- WB,IF,ELISA

**MW**

- 33kD (Observed)

**Isotype**

- IgG

### Recommended Dilution Ratios

**WB 1:500-1:2000****IF 1:200-1:1000****ELISA 1:5000****Not yet tested in other applications.**

### Storage

**Storage\***

-15°C to -25°C/1 year(Do not lower than -25°C)

**Formulation**

Liquid in PBS containing 50% glycerol, 0.5% BSA and 0.02% sodium azide.

### Basic Information

**Clonality**

Polyclonal

### Immunogen Information

**Immunogen**

The antiserum was produced against synthesized peptide derived from human CNR2. AA range:191-240

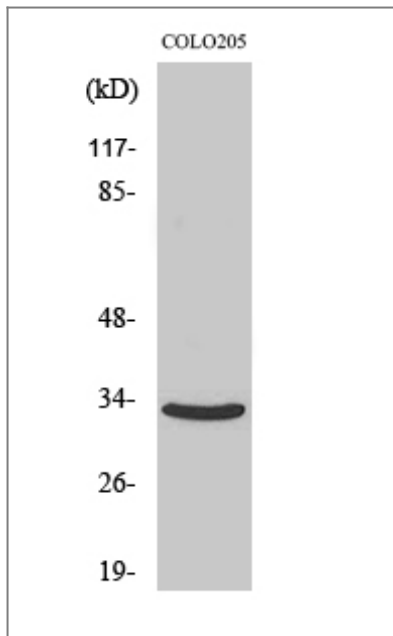
**Specificity**

CB2 Polyclonal Antibody detects endogenous levels of CB2 protein.

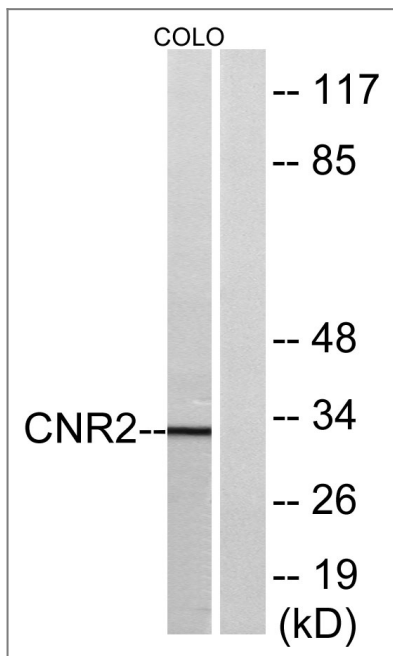
### Target Information

Gene name	CNR2		
Protein Name	Cannabinoid receptor 2		
	Organism	Gene ID	UniProt ID
	Human	<a href="#">1269;</a>	<a href="#">P34972;</a>
	Mouse		<a href="#">P47936;</a>
Cellular Localization	Cell membrane; Multi-pass membrane protein. Cell projection, dendrite . Perikaryon . Localizes to apical dendrite of pyramidal neurons. .		
Tissue specificity	Preferentially expressed in cells of the immune system with higher expression in B-cells and NK cells (at protein level). Expressed in skin in suprabasal layers and hair follicles (at protein level). Highly expressed in tonsil and to a lower extent in spleen, peripheral blood mononuclear cells, and thymus. PubMed:14657172 could not detect expression in normal brain. Expressed in brain by perivascular microglial cells and dorsal root ganglion sensory neurons (at protein level). Two isoforms are produced by alternative promoter usage and differ only in the 5' UTR: isoform CB2A is observed predominantly in testis with some expression in brain, while isoform CB2B is predominant in spleen and leukocytes.		
Function	Disease:Allelic variation at the CB2 locus is associated to genetic predisposition for depression in Japanese populations.,Function:Heterotrimeric G protein-coupled receptor for endocannabinoid 2-arachidonoylglycerol mediating inhibition of adenylate cyclase. May function in inflammatory response, nociceptive transmission and bone homeostasis.,PTM:Constitutively phosphorylated on Ser-352; phosphorylation increases cell internalization and desensitizes the receptor.,similarity:Belongs to the G-protein coupled receptor 1 family.,subcellular location:Localizes to apical dendrite of pyramidal neurons.,tissue specificity:Preferentially expressed in cells of the immune system with higher expression in B cells and NK cells (at protein level). Expressed in skin in suprabasal layers and hair follicles (at protein level). Highly expressed in tonsil and to a lower extent in spleen, peripheral blood mononuclear cells, and thymus. PubMed:14657172 could not detect expression in normal brain. Expressed in brain by perivascular microglial cells and dorsal root glanglion sensory neurons (at protein level).,		

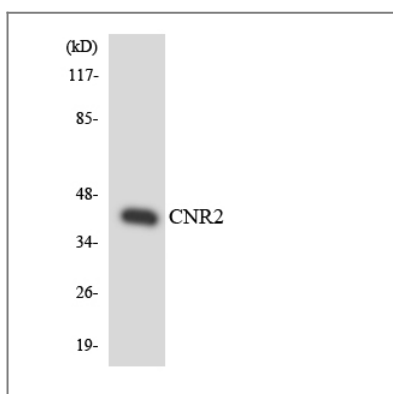
| Validation Data



Western Blot analysis of various cells using CB2 Polyclonal Antibody



Western blot analysis of lysates from COLO205 cells, using CNR2 Antibody. The lane on the right is blocked with the synthesized peptide.



Western blot analysis of the lysates from HT-29 cells using CNR2 antibody.

## Contact information

Orders: order.cn@immunoway.com  
Support: support.cn@immunoway.com  
Telephone: 400-8787-807(China)  
Website: <http://www.immunoway.com.cn>  
Address: 2200 Ringwood Ave San Jose, CA 95131 USA



Please scan the QR code  
to access additional  
product information:  
**CB2 Rabbit pAb**

---

For Research Use Only. Not for Use in Diagnostic Procedures.

[Antibody](#) | [ELISA Kits](#) | [Protein](#) | [Reagents](#)