

CB1 Rabbit pAb

CatalogNo: YT0687

| Key Features

Host Species

- Rabbit

Reactivity

- Human, Mouse, Rat, Monkey

Applications

- WB, IHC, IF, ELISA

MW

- 53kD (Observed)

Isotype

- IgG

| Recommended Dilution Ratios

WB 1:500-1:2000

IHC 1:100-1:300

IF 1:200-1:1000

ELISA 1:10000

Not yet tested in other applications.

| Storage

Storage* -15°C to -25°C/1 year (Do not lower than -25°C)

Formulation Liquid in PBS containing 50% glycerol, 0.5% BSA and 0.02% sodium azide.

| Basic Information

Clonality Polyclonal

| Immunogen Information

Immunogen The antiserum was produced against synthesized peptide derived from human CNR1. AA range:151-200

Specificity CB1 Polyclonal Antibody detects endogenous levels of CB1 protein.

Target Information

Gene name CNR1

Protein Name Cannabinoid receptor 1

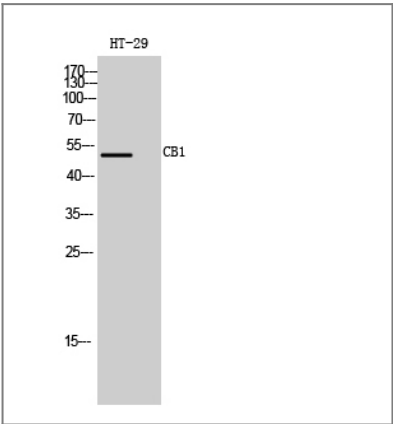
Organism	Gene ID	UniProt ID
Human	1268;	P21554;
Mouse	12801;	P47746;
Rat	25248;	P20272;

Cellular Localization Cell membrane ; Multi-pass membrane protein . Membrane raft . Mitochondrion outer membrane . Cell projection, axon . Cell junction, synapse, presynapse . Unexpectedly, in the mitochondria, the C-terminus is located in the mitochondrial intermembrane space, a compartment topologically considered as extracellular. In canonical seven-transmembrane G-protein coupled receptors, the C-terminus is cytosolic (By similarity). Found on presynaptic axon terminals in some GABAergic neurons in the somatosensory cortex (By similarity). .

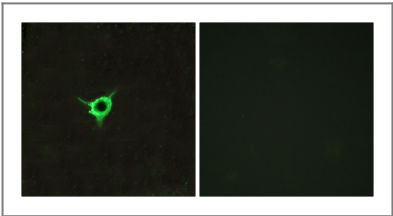
Tissue specificity Widely expressed, with highest levels in fetal and adult brain. Expression levels of isoform 2 and isoform 3 are much lower than those of isoform 1.

Function Function:Involved in cannabinoid-induced CNS effects. Acts by inhibiting adenylate cyclase. Could be a receptor for anandamide. Inhibits L-type Ca(2+) channel current. Isoform 2 and isoform 3 have altered ligand binding.,similarity:Belongs to the G-protein coupled receptor 1 family.,subunit:Interacts (via C-terminus) with CNRIP1.,tissue specificity:Widely expressed.,

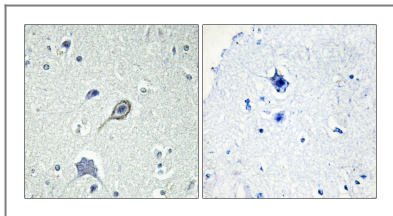
Validation Data



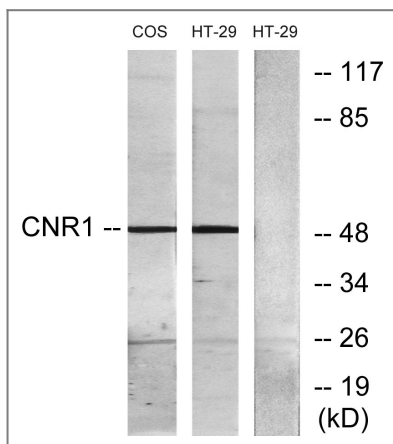
Western Blot analysis of HT-29 cells using CB1 Polyclonal Antibody



Immunofluorescence analysis of LOVO cells, using CNR1 Antibody. The picture on the right is blocked with the synthesized peptide.



Immunohistochemistry analysis of paraffin-embedded human brain tissue, using CNR1 Antibody. The picture on the right is blocked with the synthesized peptide.



Western blot analysis of lysates from HT-29 and COS7 cells, using CNR1 Antibody. The lane on the right is blocked with the synthesized peptide.

Contact information

Orders: order.cn@immunoway.com
 Support: support.cn@immunoway.com
 Telephone: 400-8787-807(China)
 Website: <http://www.immunoway.com.cn>
 Address: 2200 Ringwood Ave San Jose, CA 95131 USA



Please scan the QR code to access additional product information:
CB1 Rabbit pAb

For Research Use Only. Not for Use in Diagnostic Procedures.

[Antibody](#) | [ELISA Kits](#) | [Protein](#) | [Reagents](#)